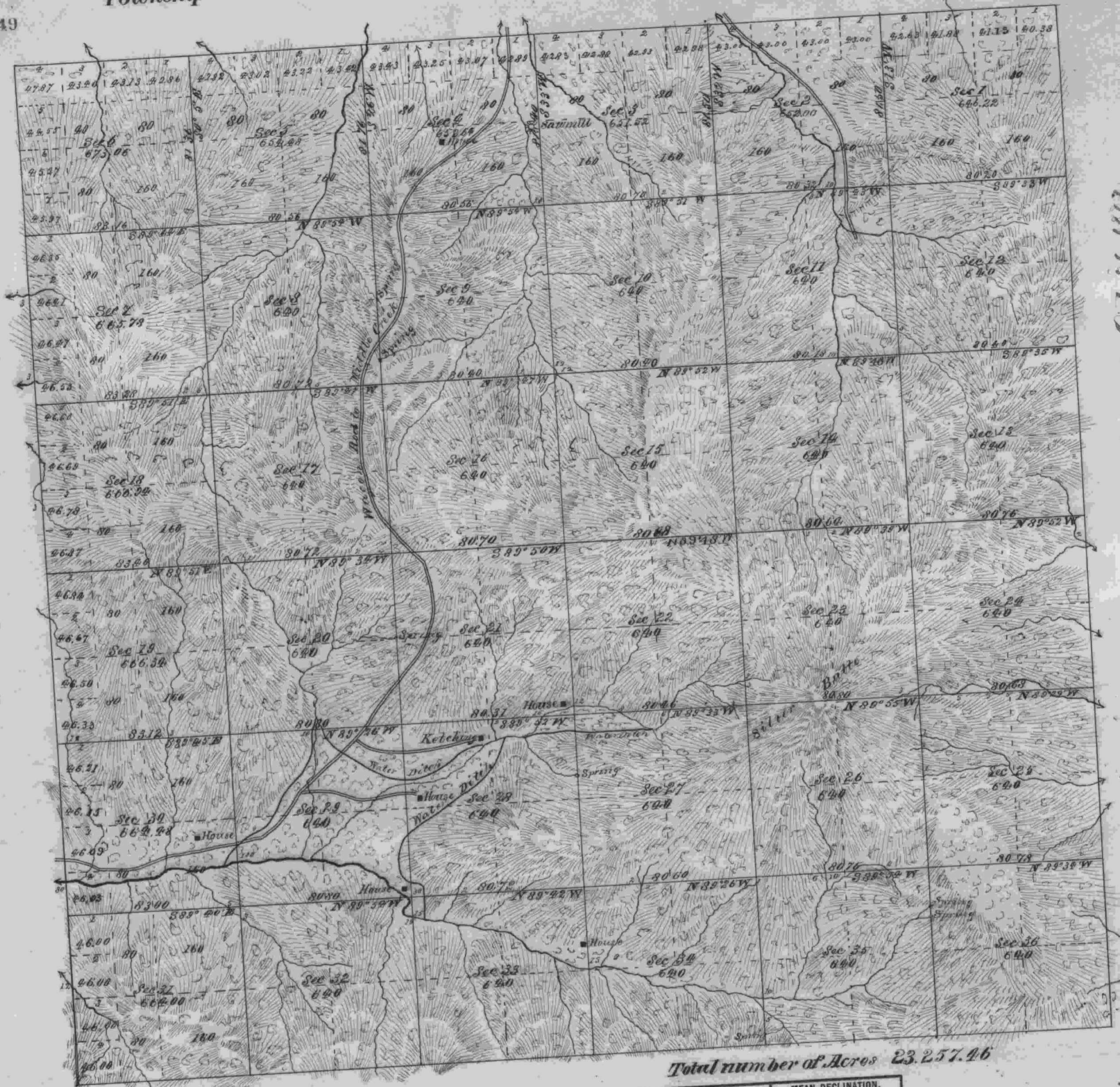


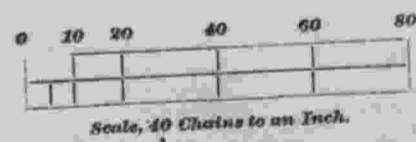
Township No. 31 South Range No. 6 West Willamette Meridian, Oregon.



ACCEPTED BY THE HON. COMMISSIONER G. L. O. Oct 26 1882

Total number of Acres 23,257.46

SURVEYS DESIGNATED.	BY WHOM SURVEYED.	NO.	DATE OF CONTRACT.	AMOUNT OF SURVEYS.			WHEN SURVEYED.	MEAN DECLINATION.
				Miles.	Chains.	Links.		
Township Lines	Harrison R. Flint	56	March 2 1845					
Subdivisions	William H. Byers	448	June 15 1882	60	38	19	July to 21 1882	19° N



The above map of the subdivisions of Township No. 31 South of Range No. 6 West of the Willamette Meridian, Oregon, is strictly conformable to the Field Notes of the survey thereof on file in this office, which have been examined and approved.

U. S. Surveyor-General's Office,
Portland, Oregon,
October 5, 1882. James C. Tolman
Surveyor-General of Oregon.