

TOWNSHIP 31 SOUTH, RANGE 5 WEST, OF THE WILLAMETTE MERIDIAN, OREGON

SHEET 1 OF 2

DEPENDENT RESURVEY AND SUBDIVISION OF SECTION 31

FILED

Date: 2/24/2022 By: JC

This survey consists of:

Map: PLAT: T31-5 2021-1

VOL. 59 PGS 23927-23928

Corner Rpt: NO SEPARATE LINENOTES
ALL INFORMATION IS ON THE PLAT

DOUGLAS COUNTY
SURVEYOR

This plat constitutes the entire record of the dependent resurvey of a portion of the south boundary, designed to restore the corners in their true original locations according to the best available evidence, and the subdivision of section 31, Township 31 South, Range 5 West, Willamette Meridian, Oregon.

The directions of the lines are based on the true meridian as determined by Global Positioning System (GPS) techniques and carried forward by sustained angulation using conventional survey techniques. All measurements along the lines were derived through the use of electronic measuring equipment. Measured distances and directions have been adjusted by computer software that incorporates a least squares adjustment routine. The adjusted mean bearings and mean horizontal ground elevation distances are reported to the nearest second and 0.01 foot.

The lottings and areas are as shown on the plat approved July 28, 1883.

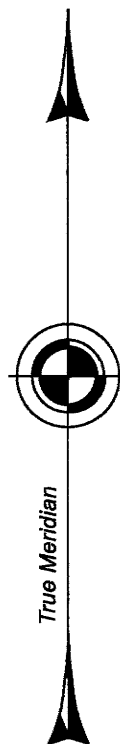
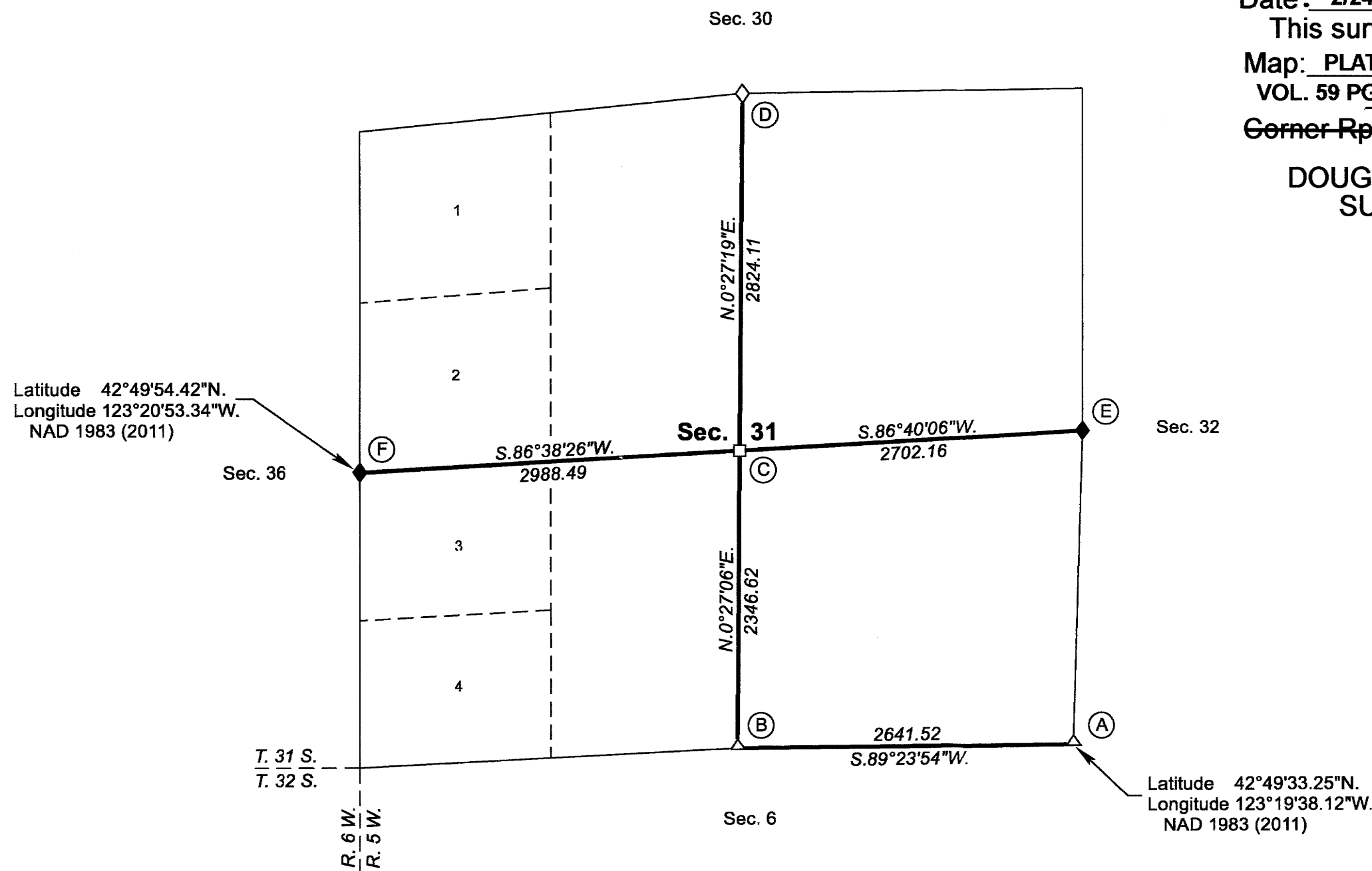
Preliminary to the resurvey, the lines of the official original surveys and resurveys were retraced and search was made for all corners, lines, other calls of the record, and, where available, collateral evidence of local surveys and corners. Identified corners were perpetuated in their original positions. The retracement data was thoroughly verified and only the true line field notes are given hereon.

Each new bearing tree has a 2 1/2 inch x 1/4 inch magnetic nail (Mag Nail) driven at the base on right side center and each monument established or reestablished has a magnet deposited in a white plastic case at the base of the stainless steel post, unless otherwise noted in the corner description. Aluminum angle irons were driven alongside each monument unless a similar marker was already in place.

Only those lines bounding Federal interest land were blazed.

The geographic positions shown hereon were determined by ties from temporary GPS control points, established utilizing dual frequency, carrier phase GPS receivers, and processed using the National Geodetic Survey's Online Positioning User Service (OPUS).

The survey was executed in accordance with the specifications set forth in the Manual of Surveying Instructions (2009), and the special instructions approved August 25, 2017, for Group No. 2883, Oregon, by Jeffrey O. Covington, beginning on March 22, 2018, and completed on April 16, 2018. He was assisted by Robert NMI Durning, Surveying Technician.



The history of the official surveys pertaining to this survey is as follows:

In 1855, Wells Lake and George W. Hyde, U.S. Deputy Surveyors, surveyed the south and west boundaries of T. 31 S., R. 5 W., as shown on the official plat of survey approved March 31, 1856.

In 1882, William H. Byars, U.S. Deputy Surveyor, surveyed a portion of the subdivisional lines of T. 31 S., R. 5 W., as shown on the official plat of survey approved July 28, 1883.

In 1901, Oscar F. Theil, U.S. Deputy Surveyor, surveyed a portion of the subdivisional lines of T. 32 S., R. 5 W., as shown on the official plat of survey approved December 16, 1904.

In 1962, Joseph S. Gawron and Norman J. McDonald, Cadastral Surveyors, resurveyed a portion of the subdivisional lines and subdivided section 5 of T. 32 S., R. 5 W., as shown on the official plat of survey accepted September 4, 1964.

The following local surveys (M) and county surveyor files (CS) filed in the Douglas County Surveyors Office are referred to in subsequent corner descriptions and are referenced by surveyor's last name, official title or Professional Land Surveyor (PLS) No., and year.

Date	Name and Registration Number	File Number
1959	George J. Wenderoth, Deputy County Surveyor	CS49/92
1963	Arnold G. Gibson, PLS No. 359	CS51/264
1964	Arnold G. Gibson, PLS No. 359	CS51/264
1966	John M. Powell, DCSSO	CS54/25-1
1995	Lloyd D. Smith, PLS No. 1101	M122-17
1998	Lloyd D. Smith, PLS No. 1101	M129-8
2017	Ronald A. Quimby, PLS No 1654	CS65/95-60

The 1995 and 1998 surveys by Lloyd D. Smith, PLS No. 1101, placed orange carsonite witness posts near some of the corners, as indicated on Smith's plats. These posts were found, but not measured to during this survey.

I, JEFFREY O. COVINGTON, Cadastral Surveyor, HEREBY CERTIFY upon honor, that in pursuance of special instructions bearing the approval date of the 25th day of August, 2017, and the assignment instructions bearing the date of the 25th day of August, 2017, I have dependently resurveyed a portion of the south boundary, and subdivided section 31, Township 31 South, Range 5 West, Willamette Meridian, Oregon, which is represented upon this plat as having been executed by me and under my direction; and that said survey has been made in strict conformity with said special instructions, the Manual of Surveying Instructions, and in the specific manner described on this plat.

Jeffrey O. Covington
Cadastral Surveyor

December 14, 2020
Date

LEGEND

- ◊ Original corner previously remonumented
- ◆ Original corner remonumented this survey
- Corner previously established or reestablished

UNITED STATES DEPARTMENT OF THE INTERIOR
BUREAU OF LAND MANAGEMENT

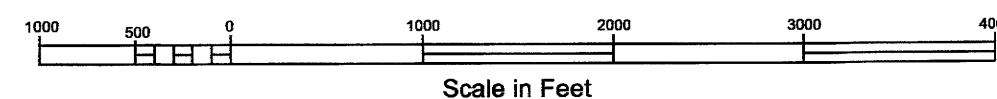
Portland, Oregon

The survey represented by this plat, having been correctly executed in accordance with the requirements of law and the regulations of this Bureau, is hereby accepted.

For the Director
Mary J. M. Hart
Chief Cadastral Surveyor of Oregon

January 11, 2021
Date

D. C. W.



OFFICIALLY FILED: 6/21/2021

TOWNSHIP 31 SOUTH, RANGE 5 WEST, OF THE WILLAMETTE MERIDIAN, OREGON

SHEET 2 OF 2

DEPENDENT RESURVEY AND SUBDIVISION OF SECTION 31

(A) The cor. of secs. 31 and 32 only, on the S. bdy. of the Tp., perpetuated by Smith, PLS No. 1101, in 1998; monumented with an iron post, 2 1/2 ins. diam., firmly set, projecting 3 ins. above ground, with a brass cap mkd.

T 31 S R 5 W
S 31 | S 32
S 6
T 32 S
1962

from which the remains of an original bearing tree

A sawed decayed cedar stump, 12 ins. diam., bears S. 22 1/2° E., 4.6 ft. dist., no marks visible.

and the remains of the bearing trees mkd. by Gawron and McDonald in 1962

A fir, 20 ins. diam., bears N. 84 1/2° E., 57.4 ft. dist., with a healed blaze.

A decayed fir snag, 9 ins. diam., bears N. 38 1/2° W., 43.6 ft. dist., with a healed blaze.

and a new bearing tree

A fir, 12 ins. diam., bears N. 55 1/2° W., 35.0 ft. dist., mkd. T31S R5W S31 BT.

Corner is located on a gentle SE slope.

(B) The 1/4 sec. cor. of sec. 31 only, on the S. bdy. of the Tp., perpetuated by Gibson, PLS No. 359, in 1964; subsequently perpetuated by Smith, PLS No. 1101, in 1998; from original evidence no longer in existence; monumented with an iron post, 2 1/2 ins. diam., firmly set, projecting 3 ins. above ground, with a brass cap mkd.

OREGON STATE BOARD OF FORESTRY
S 31
1/4
S 6
1964
RS 359

from which the remains of the bearing trees mkd. by Gibson

A sawed, decayed fir stump, 14 ins. diam., bears S. 5 1/2° W., 18.2 ft. dist., no marks visible.

A sawed fir stump, 40 ins. diam., bears N. 19° W., 51.5 ft. dist., with lower portion of the healed blaze.

and the bearing trees mkd. by Smith

A fir, 8 ins. diam., bears N. 19 1/4° E., 20.0 ft. dist., with a healed double blaze.

A fir, 16 ins. diam., bears N. 32 1/2° W., 18.6 ft. dist., with a healed blaze.

Remove the marks S 6 from the brass cap and add the marks 2018 BLM.

The cedar post placed by Gibson, 4 ins. square, painted white, is alongside the corner.

From the corner, W., at:

35 ft. dist., creek, 3 ft. wide, course S. 25° E.

150 ft. dist., shallow ravine, 4 ft. wide, drains S. 10° E.

D. C. W.

(C) The center 1/4 sec. cor. of sec. 31, established by Smith, PLS No. 1101, in 1998; and is accepted as the cor.; monumented with an aluminum post, 2 ins. diam., firmly set, projecting 1 in. above ground, with a brass cap mkd.

STATE OF OREGON DEPARTMENT OF FORESTRY
T 31 S R 5 W
C 1/4 S 31
1998
LS 1101

from which the bearing trees mkd. by Smith

A chinquapin, 9 ins. diam., bears S. 67 1/2° E., 20.2 ft. dist., with scribe marks C1/4 S31 BT visible on partially healed blaze.

A fir, 10 ins. diam., bears S. 39 3/4° W., 17.3 ft. dist., with a healed blaze.

A fir, 14 ins. diam., bears S. 75 1/4° W., 16.8 ft. dist., with a healed blaze.

A fir, 26 ins. diam., bears N. 23 1/4° W., 8.1 ft. dist., with a healed blaze.

From the corner, S. 86° 38' 26" W., at:

85 ft. dist., creek, 3 ft. wide, course S. 20° E.

325 ft. dist., same creek, 4 ft. wide, course S. 30° E.

(D) The 1/4 sec. cor. of secs. 30 and 31, perpetuated by Gibson, PLS No. 359, in 1963; subsequently perpetuated by Powell, Douglas County Surveyor, in 1966; further perpetuated by Smith, PLS No. 1101, in 1995; and further perpetuated by Quimby, PLS No. 1654, in 2017; monumented with an iron post, 2 1/2 ins. diam., firmly set, projecting 7 ins. above ground, with a brass cap mkd.

OREGON STATE BOARD OF FORESTRY
S 30
1/4
S 31
1963
RS 359

from which the remains of the original bearing trees

A sawed, decayed fir stump, 42 ins. diam., bears N. 70° E., 18.5 ft. dist., no marks visible.

A roothole bears S. 35° W., 5.9 ft. dist., downhill of which is a down decayed fir, 35 ins. diam., no marks visible.

and the remains of the bearing trees mkd. by Gibson

A sawed, decayed cedar stump, 27 ins. diam., bears N. 23 3/4° E., 29.0 ft. dist., with a healed blaze.

A sawed, decayed hemlock stump, 18 ins. diam., bears S. 26 1/4° W., 26.3 ft. dist., with illegible scribe marks visible on open blaze.

and the remains of the bearing trees mkd. by Powell

A hemlock, 26 ins. diam., bears S. 22 1/4° W., 31.0 ft. dist., with a healed blaze.

A sawed, decayed hemlock stump, 26 ins. diam., bears N. 31 3/4° W., 57.6 ft. dist., no marks visible.

and the bearing trees mkd. by Quimby

A cedar, 15 ins. diam., bears N. 9° E., 5.5 ft. dist., with scribe marks 1/4 S30 BT visible on open blaze.

A fir, 23 ins. diam., bears S. 42 3/4° E., 14.4 ft. dist., with scribe marks 1/4 S31 BT visible on open blaze.

The cedar post placed by Gibson, 4 ins. square, painted white, is alongside the cor.

Corner is located W., 155 ft. dist. of a graveled road, 14 ft. wide, bears N. 20° E. and S. 10° W.

(E) The 1/4 sec. cor. of secs. 31 and 32, perpetuated by Gibson, PLS No. 359, in 1963; subsequently perpetuated by Smith, PLS No. 1101, in 1998; monumented with the remains of the original cor. tree, a heavily decayed pine stump, 36 ins. diam., with no marks visible, from which the remains of an original bearing tree

A sawed, decayed fir stump, 36 ins. diam., bears S. 45° E., 4.3 ft. dist., no marks visible. (Record, 2.0 ft. dist.)

and the accessories mkd. by Gibson

An iron post, 2 1/2 ins. diam., firmly set, projecting 12 ins. above ground, bears N. 19° 31' 47" E., 2.10 ft. dist., with a brass cap mkd. OREGON STATE BOARD OF FORESTRY RS 239 2.1 RM 1963 X and an arrow pointing to the cor.

A fir, 14 ins. diam., bears N. 30° E., 23.7 ft. dist., with a healed blaze.

A fir, 26 ins. diam., bears N. 76 3/4° W., 53.8 ft. dist., with a healed blaze.

and the bearing trees mkd. by Smith

A fir, 10 ins. diam., bears S. 11° E., 10.5 ft. dist., with a healed blaze.

A fir, 13 ins. diam., bears S. 30° W., 9.6 ft. dist., with a healed blaze.

At the corner point

Set a stainless steel post, 28 ins. long, 2 1/2 ins. diam., in the center of the decayed stump, 27 ins. in the ground, with brass cap mkd.

T 31 S R 5 W
1/4
S 31 | S 32
2018

Corner is located on a broken NE slope.

(F) The 1/4 sec. cor. of secs. 31 and 36, on the W. bdy. of the Tp., perpetuated by Wenderoth, Deputy Douglas County Surveyor, in 1959; subsequently perpetuated by Smith, PLS No. 1101, in 1998; from original evidence no longer in existence; monumented with an iron pipe, 1 1/4 ins. diam., firmly set, projecting 9 ins. above ground.

At the corner point

Set a stainless steel post, 28 ins. long, 2 1/2 ins. diam., 26 ins. in the ground, directly over the iron pipe, 28 ins. long, with brass cap mkd.

T 31 S
R 6 W R 5 W
1/4
S 36 | S 31
2018

from which

A fir, 10 ins. diam., bears S. 77° E., 16.5 ft. dist., mkd. 1/4 S31 BT.

A fir, 11 ins. diam., bears S. 20 3/4° W., 11.5 ft. dist., mkd. 1/4 S36 BT.

Corner is located on an E. slope.

FILED

Date: 2/24/2022 By: JC
This survey consists of:
Map: PLAT: T31-5 2021-1
VOL. 59 PGS 23927-23928

Corner Rpt: ALL INFORMATION IS ON THE PLAT

DOUGLAS COUNTY SURVEYOR

UNITED STATES DEPARTMENT OF THE INTERIOR
BUREAU OF LAND MANAGEMENT

Portland, Oregon

The survey represented by this plat, having been correctly executed in accordance with the requirements of law and the regulations of this Bureau, is hereby accepted.

For the Director

May J. M. Harts

Chief Cadastral Surveyor of Oregon

January 11, 2021
Date

OFFICIALLY FILED: 6/21/2021