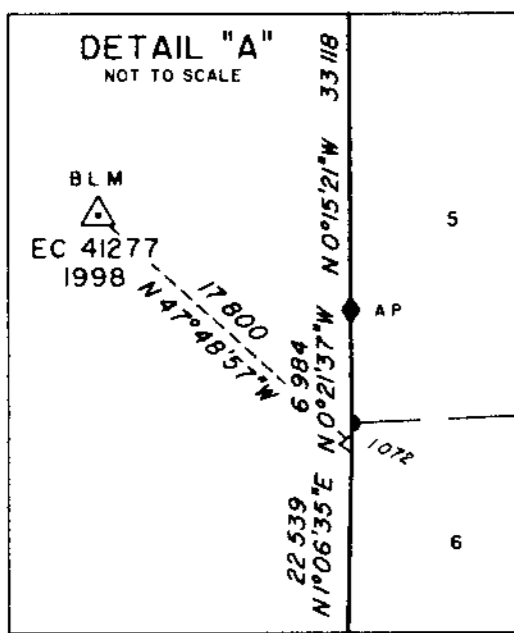
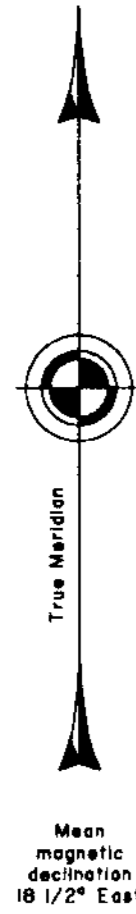
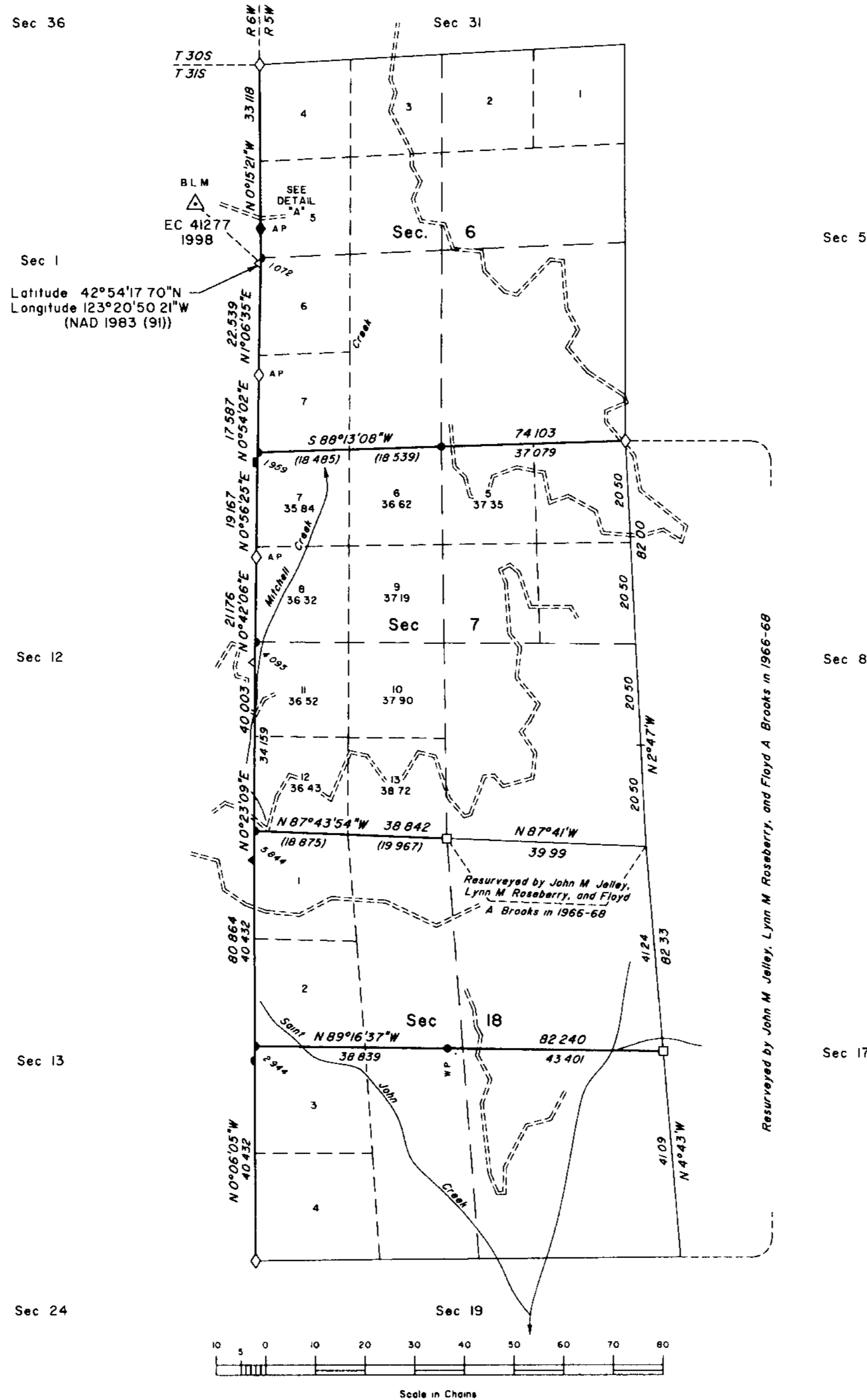


# TOWNSHIP 31 SOUTH, RANGE 5 WEST, OF THE WILLAMETTE MERIDIAN, OREGON

## DEPENDENT RESURVEY AND SUBDIVISION OF SECTION 18



A history of surveys is contained in the field notes

This plat represents a dependent resurvey of a portion of the east boundary, T 31 S, R 6 W, and a portion of the subdivisional lines, T 31 S, R 5 W, Willamette Meridian, Oregon, designed to restore the corners in their true original locations according to the best available evidence, and the subdivision of section 18

Measured distances and directions have been adjusted by Cadastral Measurement Management (CMM), computer software that incorporates a least squares adjustment routine. The adjusted bearings and distances are reported to the nearest second and 0.001 chain

Except as shown hereon, the lottings and areas are as shown on the plats approved July 31, 1878 and July 28, 1883, and the plat accepted December 28, 1970

The survey was executed by Daniel E. Weller, Cadastral Surveyor, beginning July 22, 1998, and completed September 3, 1998, pursuant to Special Instructions dated June 3, 1998, under Group Number 1884, Oregon

Timber in this area consists of fir, oak, madrone, cedar, pine, hemlock, yew, dogwood, chinquapin, and alder

The tie to the geodetic control station is reported as mean bearing and sea level distance

LEGEND	
◊	Original corner previously remonumented
◆	Original corner remonumented this survey
□	Corner previously established or reestablished
●	Corner established or reestablished this survey

UNITED STATES DEPARTMENT OF THE INTERIOR  
BUREAU OF LAND MANAGEMENT

Portland, Oregon December 18, 2000

This plat is strictly conformable to the approved field notes, and the survey, having been correctly executed in accordance with the requirements of law and the regulations of this Bureau, is hereby accepted

For the Director

*Wayne M. Gardner*

Chief Cadastral Surveyor of Oregon