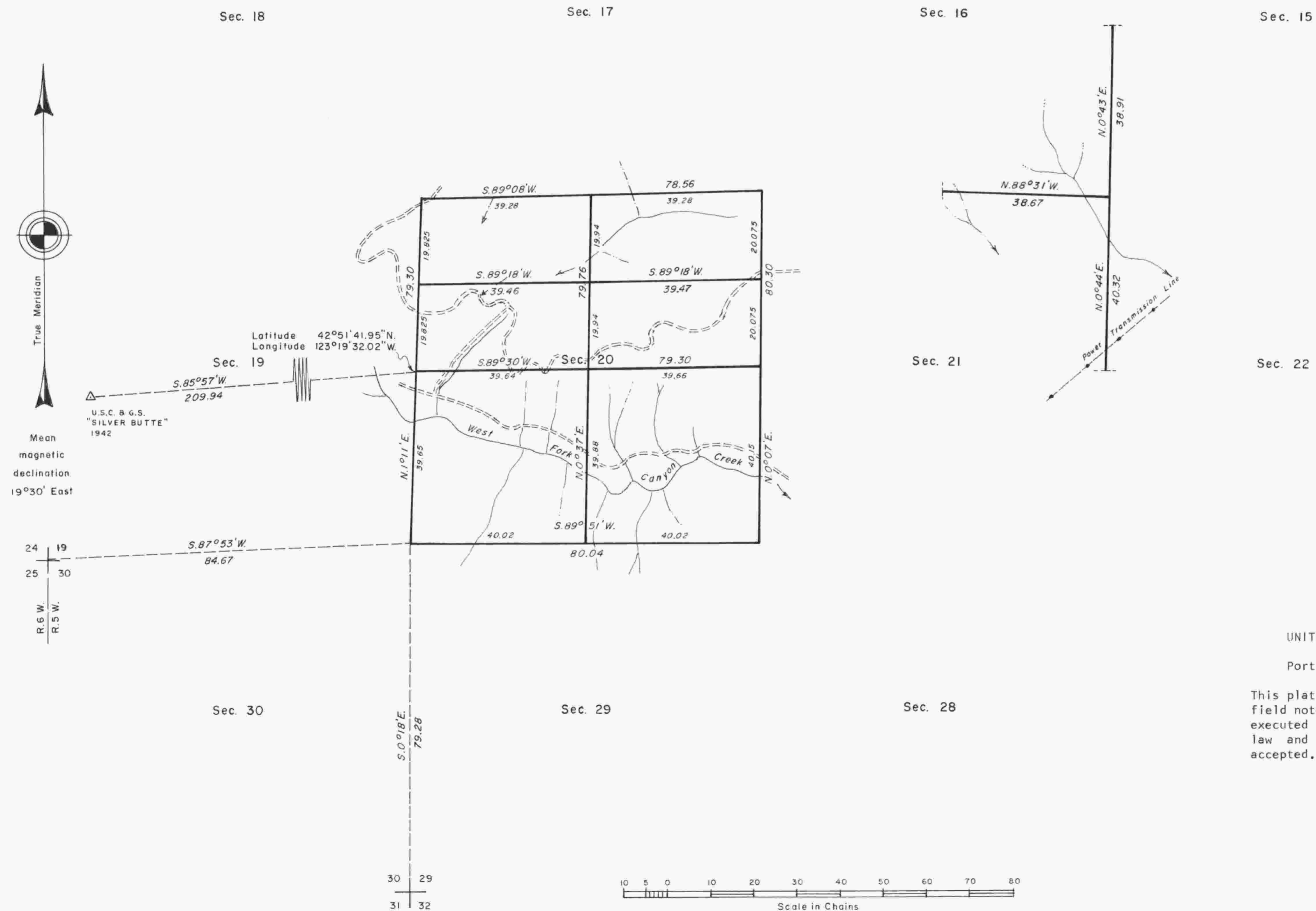


TOWNSHIP 31 SOUTH, RANGE 5 WEST, OF THE WILLAMETTE MERIDIAN, OREGON.

DEPENDENT RESURVEY AND SUBDIVISION OF SECTION 20



A history of surveys is contained in the field notes.

This plat represents a dependent resurvey of a portion of the subdivisional lines, T. 31 S., R. 5 W., Willamette Meridian, Oregon, designed to restore the corners in their true original locations according to the best available evidence, and the subdivision of section 20.

The lottings and areas are as shown on the plat approved July 28, 1883.

The survey was executed by James E. Jelley and Wayne L. Rogers, Cadastral Surveyors, beginning September 16, 1982, and completed May 4, 1983, pursuant to Special Instructions dated July 7, 1982, for Group No. 1101, Oregon.

Timber in this area consists of fir, hemlock, cedar, willow, oak, madrone, yew, pine, alder, ash, maple, and chinquapin.

UNITED STATES DEPARTMENT OF THE INTERIOR
BUREAU OF LAND MANAGEMENT
Portland, Oregon August 31, 1984

This plat is strictly conformable to the approved field notes, and the survey, having been correctly executed in accordance with the requirements of law and the regulations of this Bureau, is hereby accepted.

For the Director

William W. Glenn

Chief Cadastral Surveyor of Oregon