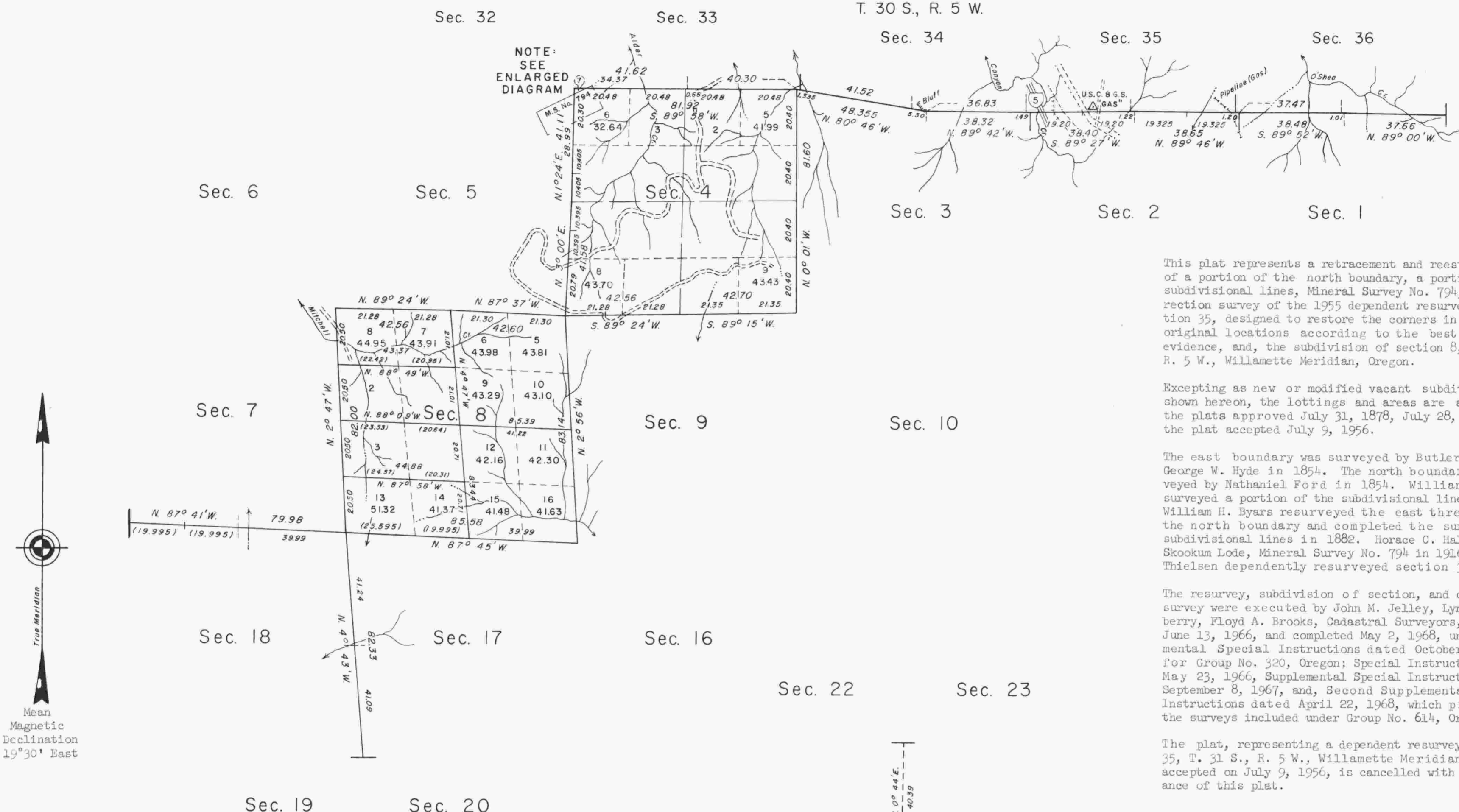


# TOWNSHIP 31 SOUTH, RANGE 5 WEST, OF THE WILLAMETTE MERIDIAN, OREGON.

## DEPENDENT RESURVEY, SUBDIVISION OF SECTION 8, AND CORRECTION SURVEY OF SECTION 35.

T. 30 S., R. 5 W.



This plat represents a retracement and reestablishment of a portion of the north boundary, a portion of the subdivisional lines, Mineral Survey No. 794, and correction survey of the 1955 dependent resurvey of section 35, designed to restore the corners in their true original locations according to the best available evidence, and, the subdivision of section 8, T. 31 S., R. 5 W., Willamette Meridian, Oregon.

Excepting as new or modified vacant subdivisions are shown hereon, the lottings and areas are as shown on the plats approved July 31, 1878, July 28, 1883, and the plat accepted July 9, 1956.

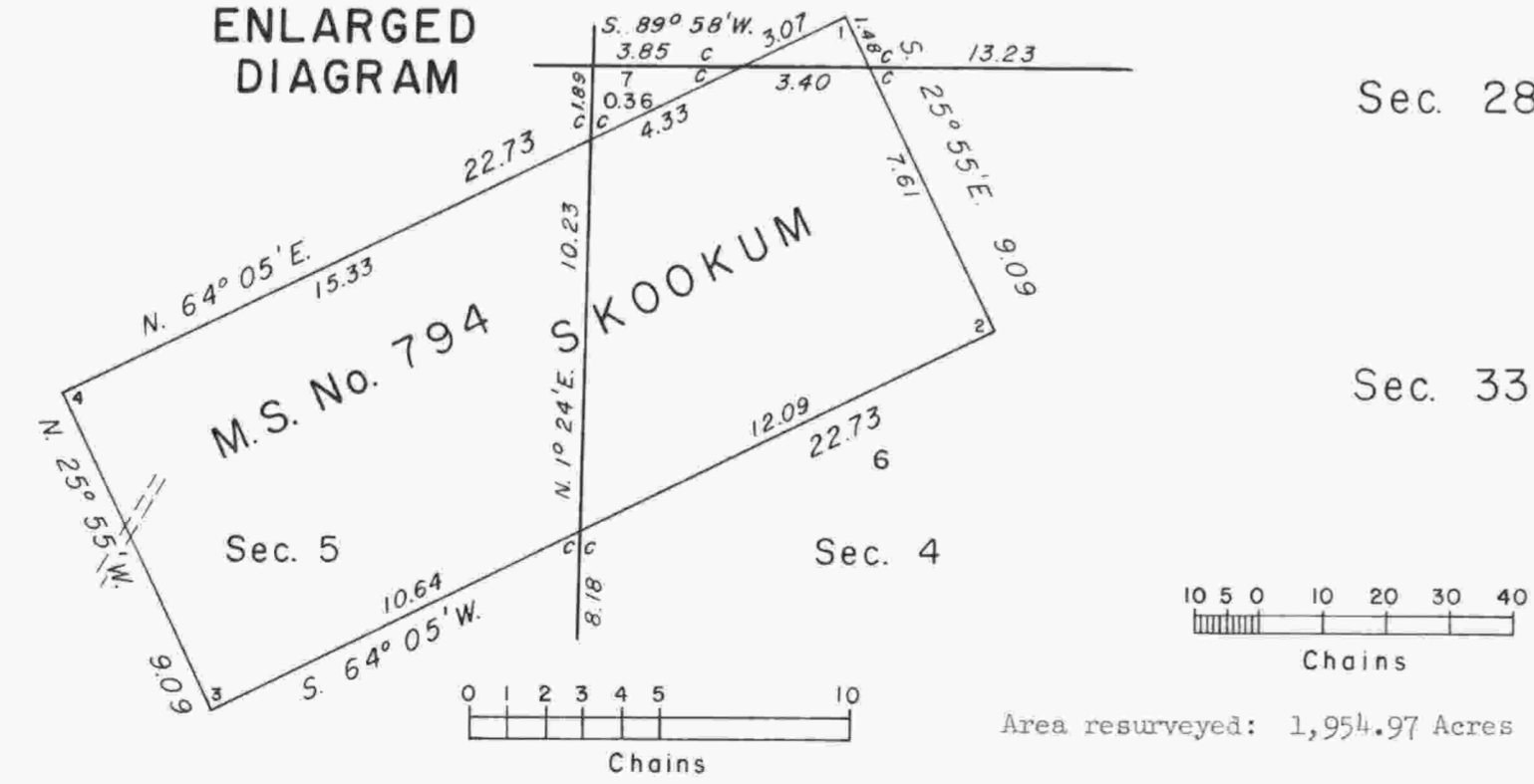
The east boundary was surveyed by Butler Ives and George W. Hyde in 1854. The north boundary was surveyed by Nathaniel Ford in 1854. William P. Wright surveyed a portion of the subdivisional lines in 1878. William H. Byars resurveyed the east three miles of the north boundary and completed the survey of the subdivisional lines in 1882. Horace C. Hall surveyed Skookum Lode, Mineral Survey No. 794 in 1916. Hans W. Thielsen dependently resurveyed section 35 in 1955.

The resurvey, subdivision of section, and correction survey were executed by John M. Jelley, Lynn M. Roseberry, Floyd A. Brooks, Cadastral Surveyors, beginning June 13, 1966, and completed May 2, 1968, under Supplemental Special Instructions dated October 10, 1966, for Group No. 320, Oregon; Special Instructions dated May 23, 1966, Supplemental Special Instructions dated September 8, 1967, and, Second Supplemental Special Instructions dated April 22, 1968, which provide for the surveys included under Group No. 614, Oregon.

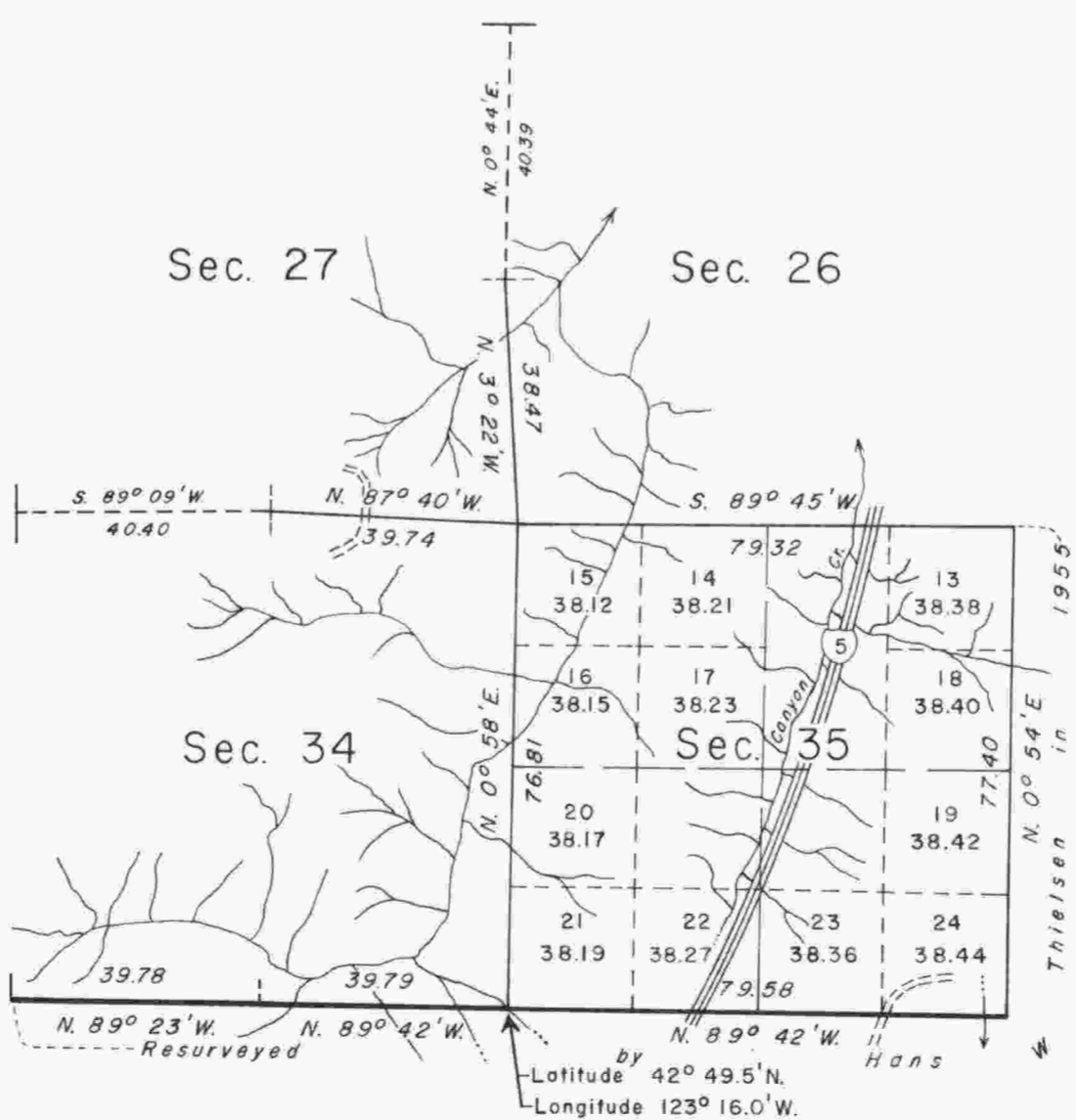
The plat, representing a dependent resurvey of section 35, T. 31 S., R. 5 W., Willamette Meridian, Oregon, accepted on July 9, 1956, is cancelled with the acceptance of this plat.

True Meridian  
Mean  
Magnetic  
Declination  
19°30' East

### ENLARGED DIAGRAM



Timber in this area consists of fir, oak, madrone, cedar, hemlock, pine, alder, maple, dogwood, yew, willow, chinquapin, cascara, and myrtle.



UNITED STATES DEPARTMENT OF THE INTERIOR  
BUREAU OF LAND MANAGEMENT  
Washington, D. C. December 28, 1970

This plat is strictly conformable to the approved field notes, and the survey, having been correctly executed in accordance with the requirements of law and the regulations of this Bureau, is hereby accepted.

For the Director  
*Clark J. Hamm*

Chief, Division of Cadastral Survey