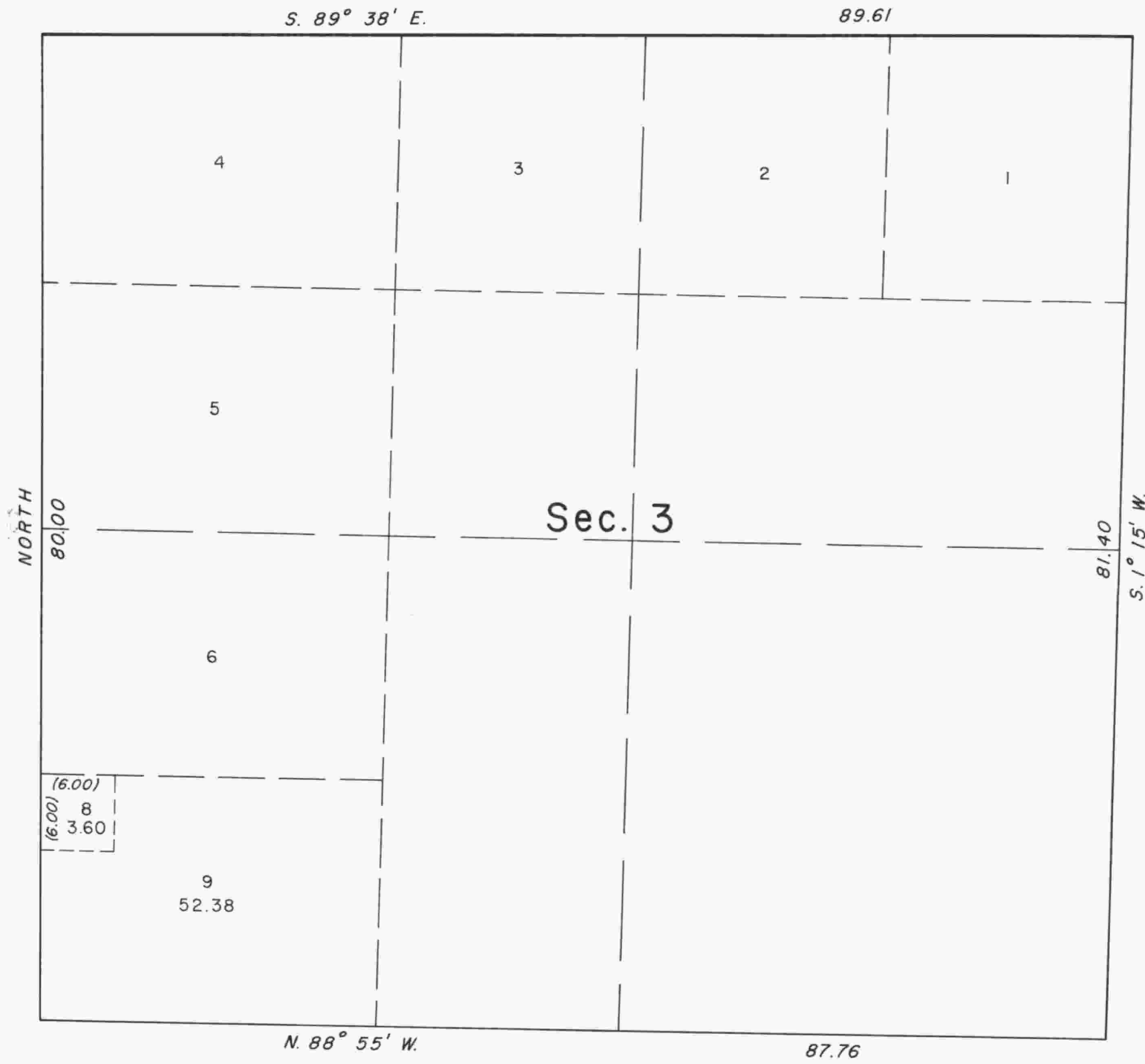


TOWNSHIP 31 SOUTH, RANGE 5 WEST, OF THE WILLAMETTE MERIDIAN, OREGON.
SUPPLEMENTAL PLAT



This plat, showing amended lottings in Section 3, T. 31 S., R. 5 W., Willamette Meridian, Oregon, is based upon the plat approved July 28, 1883.

UNITED STATES DEPARTMENT OF THE INTERIOR
BUREAU OF LAND MANAGEMENT
Washington, D. C. May 21, 1958

This plat, showing amended lottings, is based upon the official records, and having been correctly prepared in accordance with the regulations, is hereby accepted.

For the Director
Carl S. Harrington
Cadastral Engineering Staff Officer

CRH