

# TOWNSHIP 31 SOUTH, RANGE 5 WEST, OF THE WILLAMETTE MERIDIAN, OREGON.

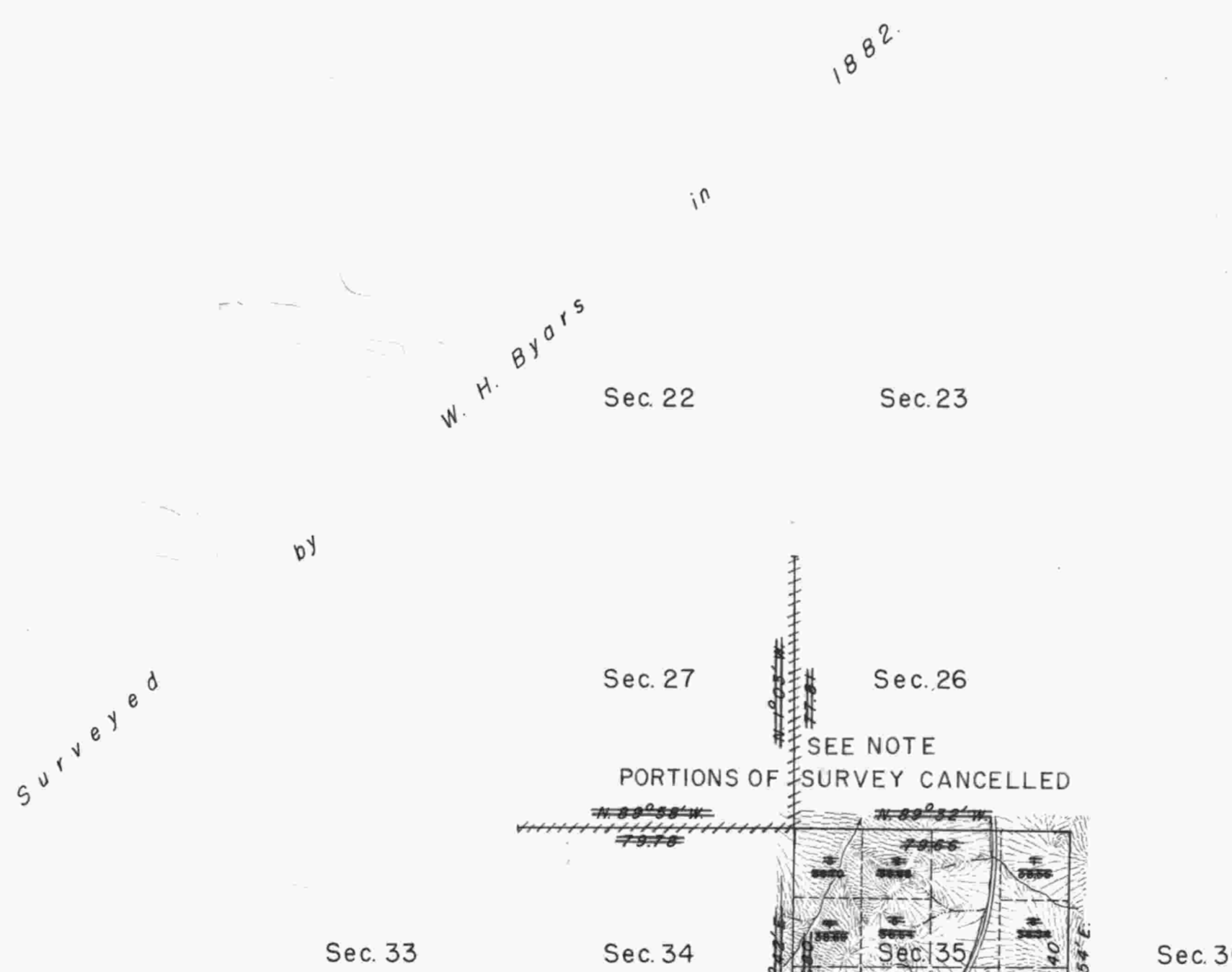
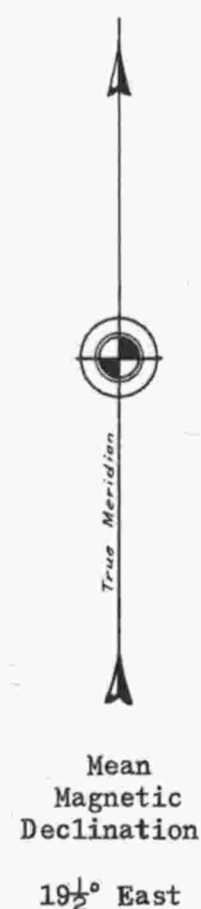
DEPENDENT RESURVEY

This plat represents a retracement and re-establishment of a portion of the south boundary and a portion of the subdivisional lines designed to restore the corners in their true locations according to the best available evidence; and, excepting as new or modified vacant subdivisions are shown hereon, the lottings and areas are as shown on the plat approved July 25, 1883.

South boundary surveyed by G. W. Hyde in 1855.

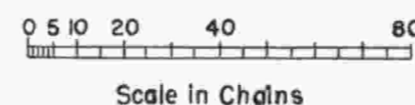
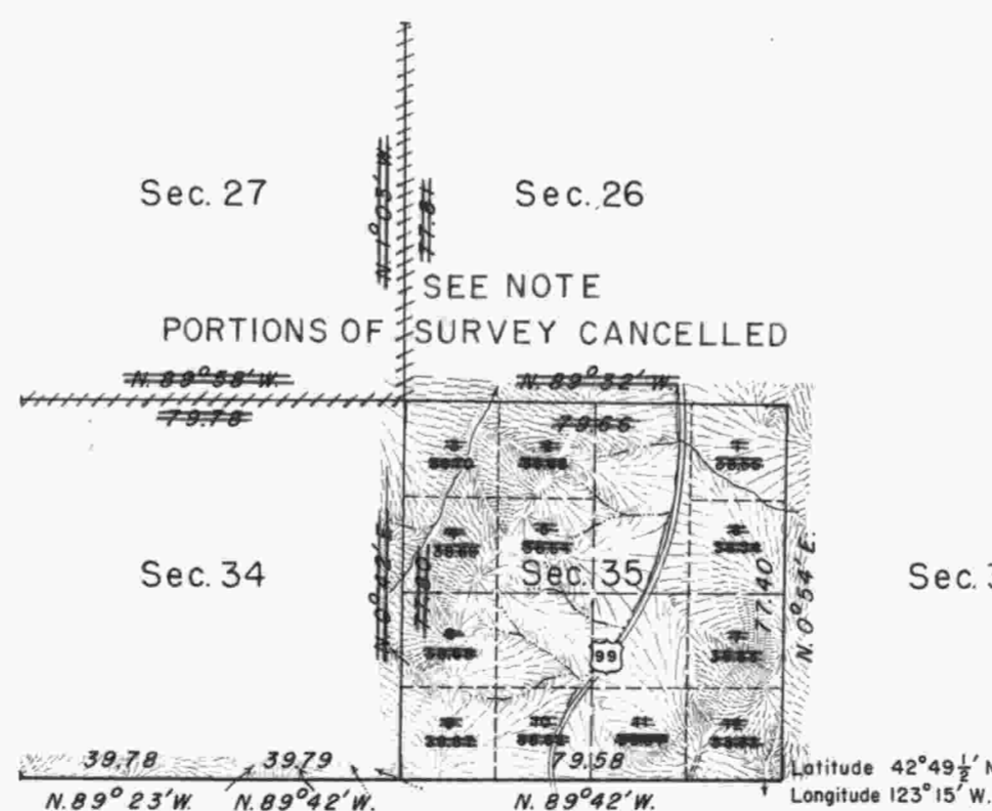
Subdivisional lines surveyed by W. H. Byars in 1882.

Dependent resurvey of a portion of the south boundary and a portion of the subdivisional lines of T. 31 S., R. 5 W., W. M., Oregon, executed by Hans W. Thielsen, October 5 to November 29, 1955, under special instructions dated August 17, 1955, which provide for the surveys included under Group No. 320, Oregon.



Timber in this area consists of fir, maple, cedar, and madrona with some ash along the streams.

(NOTE)  
Certain resurveys in connection with Sections 26, 27, 34 and 35, T. 31 S., R. 5 W., are cancelled by authority of Director's memorandum 9182 (420) dated December 31, 1970. The portions affected have been deleted. See plat accepted December 28, 1970.



Area resurveyed: 623.36 acres

UNITED STATES DEPARTMENT OF THE INTERIOR  
BUREAU OF LAND MANAGEMENT  
Washington, D. C. July 9, 1956

This plat is strictly conformable to the approved field notes, and the survey, having been correctly executed in accordance with the requirements of law and the regulations of this Bureau, is hereby accepted.

For the Director

*Earl G. Harrington*  
Cadastral Engineering Staff Officer