

Date: 9/18/2017 By: JC  
 This survey consists of:  
 Map: PLAT: T31-4 2017-1  
 Narrative: VOL. 58 PAGE  
 Corner Rpt: 23492  
NO SEPARATE LINE NOTES  
 INFORMATION ON THE PLAT  
 DOUGLAS COUNTY  
 SURVEYOR

# TOWNSHIP 31 SOUTH, RANGE 4 WEST, OF THE WILLAMETTE MERIDIAN, OREGON

## DEPENDENT RESURVEY

This plat constitutes the entire record of the dependent resurvey of a portion of the subdivision of section lines in section 34, designed to restore the corners in their true original locations according to the best available evidence, Township 31 South, Range 4 West, Willamette Meridian, Oregon.

The history of official surveys pertaining to this survey is as follows:

In 1871, William H. Byars, U.S. Deputy Surveyor, surveyed a portion of the subdivisional lines, as shown on the official plat of survey approved April 26, 1872.

In 1894, William M. Bushey, U.S. Deputy Surveyor, surveyed a portion of the subdivisional lines, as shown on the official plat of survey approved June 29, 1895.

In 1972, Lynn M. Roseberry and Larry D. Evans, Cadastral Surveyors, resurveyed a portion of the south boundary and subdivisional lines, and subdivided section 34, as shown on the official plat of survey accepted February 17, 1978.

The direction of the lines are based on the true meridian as determined by Global Positioning System (GPS) techniques and carried forward by sustained angulation using conventional surveying techniques. All measurements along the lines were derived through the use of GPS and conventional surveying techniques. Measured distances and directions have been adjusted by computer software that incorporates a least squares adjustment routine. The adjusted mean bearings and mean horizontal ground elevation distances are reported to the nearest second and 0.01 foot.

Official areas based on the measurements of this survey have been returned for Federal interest land where indicated. Aliquot part legal subdivisions retain their aliquot characteristics and refer to precisely the same land as that which was previously identified by its original survey or description or supplemental plat. Except as indicated hereon, the lottings and areas are as shown on the plat approved April 26, 1872.

Preliminary to the resurvey, the lines of the official original surveys and resurveys were retraced and a search was made for all corners, lines, other calls of record, and where available, collateral evidence of local surveys and corners. Identified corners were perpetuated in their original positions. The retracement data was thoroughly verified and only the true line field data are given hereon.

Only those lines which represent the Bureau of Land Management (BLM) property lines were posted with aluminum angle posts, 5 feet long, 1 inch x 1 inch, blazed, painted, and tagged with BLM boundary tags.

Each new bearing tree has a 2 1/2 inch x 1/4 inch magnetic nail (Mag Nail) driven at the base on right side center, unless otherwise noted in the corner description.

The geographic position shown hereon was determined by a tie from a temporary GPS control point utilizing dual frequency, carrier phase GPS receivers, and processed using the National Geodetic Survey's Online Positioning User Service (OPUS).

The survey was executed in accordance with the specifications set forth in the Manual of Surveying Instructions (2009), and the Special Instructions approved April 6, 2016 for Group No. 2828, Oregon, by Ernest Q. Lundeen, Cadastral Surveyor, beginning April 6, 2016, and completed April 18, 2016. He was assisted by Dale A. Mustain and Todd R. Jennings, Surveying Technicians.

UNITED STATES DEPARTMENT OF THE INTERIOR  
 BUREAU OF LAND MANAGEMENT

Portland, Oregon

The survey represented by this plat, having been correctly executed in accordance with the requirements of law and the regulations of this Bureau, is hereby accepted.

For the Director  
*Mary J. M. Hault*  
 Chief Cadastral Surveyor of Oregon

June 23, 2017  
 Date

- (A) The 1/4 sec. cor. of secs. 34 and 35, monumented with an iron post, 2 1/2 ins. diam., firmly set, projecting 3 ins. above ground with brass cap mkd.

T 31 S R 4 W  
 1/4  
 S 34 | S 35  
 1972

from which bearing trees mkd. by Roseberry and Evans in 1972

A fir, 19 ins. diam., bears N. 53 1/2° E., 41.3 ft. dist., with a healed blaze. (Record, N. 55° E.)

A pine, 24 ins. diam., bears S. 75° W., 71.0 ft. dist., with a healed blaze.

- (B) The center 1/4 sec. cor. of sec. 34, monumented with an iron post, 2 1/2 ins. diam., firmly set, projecting 6 ins. above the ground with brass cap mkd.

C 1/4 S 34  
 1972

from which bearing trees mkd. by Roseberry and Evans in 1972

A fir, 21 ins. diam., bears S. 26 1/2° E., 25.2 ft. dist., with a healed blaze. (Record, S. 24° E., 25.7 ft.)

A hemlock, 12 ins. diam., bears N. 83 1/2° W., 23.1 ft. dist., with a healed blaze. (Record, N. 84° E.)

- (C) The center W 1/16 sec. cor. of sec. 34, monumented with an iron post, 2 1/2 ins. diam., firmly set, projecting 4 ins. above the ground with brass cap mkd.

W 1/16  
 C ——— C  
 S 34  
 1972

from which a bearing tree mkd. by Roseberry and Evans in 1972

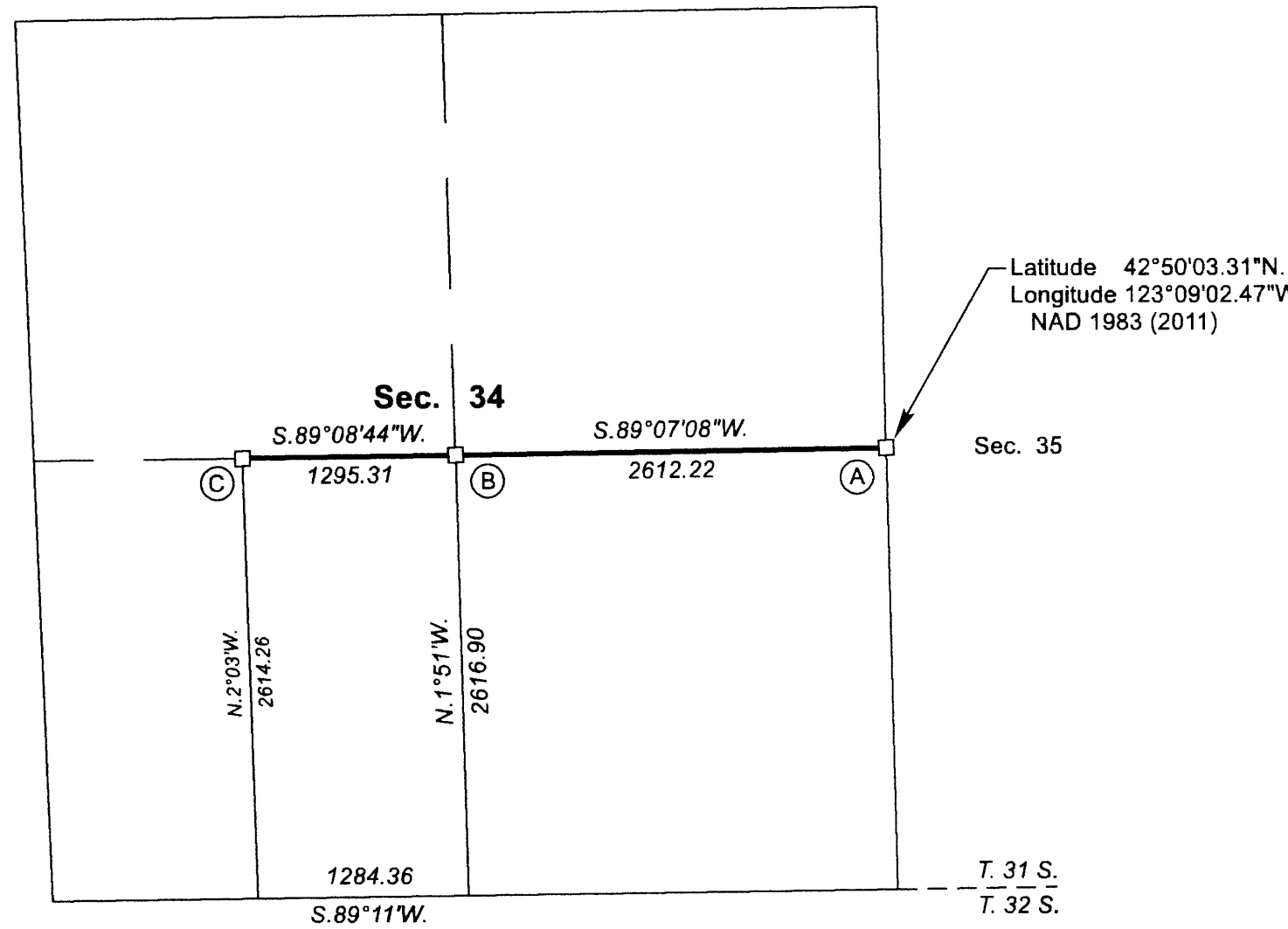
A fir, 29 ins. diam., bears N. 32 3/4° W., 21.2 ft. dist., with a healed blaze. (Record, N. 34° W., 21.8 ft.)

and the remains of a bearing tree of unknown origin

A fir snag, 21 ins. diam., bears S. 40 3/4° W., 22.4 ft. dist., with a healed blaze.

and a new bearing tree

A fir, 9 ins. diam., bears S. 49 3/4° E., 14.0 ft. dist., mkd. CW 1/16 S34 BT.



Latitude 42°50'03.31\"/>

NOTE:  
 The lightweight lines with bearings and distances shown were surveyed by Lynn M. Roseberry and Larry D. Evans in 1972, and were utilized to calculate the areas of the Federal interest land in section 34.

LEGAL SUBDIVISION	OFFICIAL ACRES
SECTION 34	
E 1/2 SW 1/4	77.40
TOTAL AREA 77.40	
FEDERAL INTEREST LAND RESURVEYED	

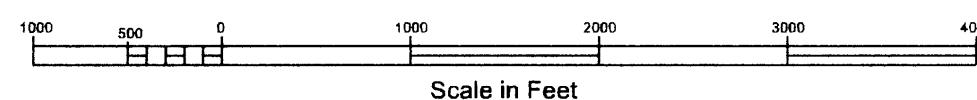
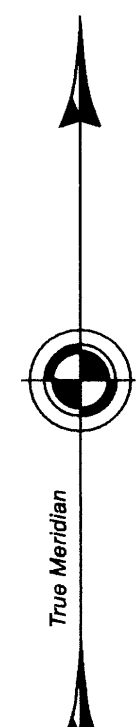
**LEGEND**

Corner previously established or reestablished

I, Ernest Q. Lundeen, Cadastral Surveyor, HEREBY CERTIFY upon honor, that in pursuance of special instructions bearing the approval date of the 6th day of April, 2016, and the assignment instructions bearing the date of the 6th day of April, 2016, I have dependently resurveyed a portion of the subdivision of section lines in section 34, Township 31 South, Range 4 West, Willamette Meridian, Oregon, which is represented upon this plat as having been executed by me and under my direction; and that said survey has been made in strict conformity with said special instructions, the Manual of Surveying Instructions, and in the specific manner described on this plat.

*Ernest Q. Lundeen*  
 Cadastral Surveyor

6/20/2017  
 Date



OFFICIALLY FILED: 7/20/2017