

TOWNSHIP 31 SOUTH, RANGE 4 WEST, OF THE WILLAMETTE MERIDIAN, OREGON

This survey consists of:
Map: T31S R4W 2014-1

Narrative: VOL. 58 PGS 23071
Corner Rpt: THIS PLAT REPRESENTS THE ENTIRE RECORD OF THE DEPENDENT RESURVEY

DOUGLAS COUNTY SURVEYOR

DEPENDENT RESURVEY

(A) The 1/4 sec. cor. of secs. 21 and 22, perpetuated by the Douglas County Surveyor's Office in 1955 and again in 1966 from evidence no longer in existence, filed in the Douglas County Record of Government Corners Renewed, T. 31 S., R. 4 W., point identifier No. 400340, monumented with an iron post, 1 1/2 ins. diam., firmly set, projecting 12 ins. above the ground, with a brass cap mkd.

COUNTY SURVEYORS OFFICE
T 31 S R 4 W
1/4 S 21 S 22
1966

from which the remains of bearing trees mkd. by the Douglas County Surveyor's Office in 1955

A fir, 30 ins. diam., bears S. 67 3/4° E., 35.8 ft. dist., with a healed blaze.

A sawed fir stump, 27 ins. diam., bears S. 83 3/4° W., 25.1 ft. dist., with illegible scribe marks visible on open blaze.

and a new bearing tree

A fir, 12 ins. diam., bears S. 41° W., 9.5 ft. dist., mkd. 1/4 S21 BT.

(B) The N 1/16 sec. cor. of secs. 21 and 22, established by Hull, PLS No. 901, in 2003, and is accepted as the cor., monumented with an iron rod, 5/8 in. diam., firmly set, projecting 2 ins. above the ground, with yellow plastic cap mkd. HULL RS 901, from which the remains of bearing trees mkd. by Hull

A fir snag, 21 ins. diam., bears N. 46 3/4° E., 7.5 ft. dist., with scribe marks N 1/16 RS 901 BT visible on open double blaze.

A fir, 14 ins. diam., bears S. 43 1/4° E., 6.6 ft. dist., with illegible scribe marks visible on partially healed double blaze.

A fir, 10 ins. diam., bears N. 34° W., 19.2 ft. dist., with scribe marks N 1/16 RS 901 BT visible on partially healed double blaze.

A fir, 16 ins. diam., bears N. 14 1/2° W., 32.8 ft. dist., with illegible scribe marks visible on partially healed double blaze.

At the corner point

Set a stainless steel post, 28 ins. long, 2 1/2 ins. diam., 26 ins. in the ground, directly over the iron rod, with brass cap mkd.

N 1/16
S 21 | S 22
2013

Deposit a magnet in a white plastic case at the base of the stainless steel post.

(C) The cor. of secs. 15, 16, 21, and 22, perpetuated by Smalley, PLS No. 2354, in 2000, monumented with an iron post, 1 1/2 ins. diam., firmly set, projecting 12 ins. above the ground, with brass cap mkd.

COUNTY SURVEYORS OFFICE
T 31 S R 4 W
S 16 | S 15
S 21 | S 22
1966

from which the remains of original bearing trees

A fir, 36 ins. diam., bears N. 34 1/2° E., 24.1 ft. dist., with a healed blaze.

A sawed fir stump, 46 ins. diam., bears S. 57° W., 18.2 ft. dist., with no scribe marks visible on open blaze.

A sawed fir stump, 55 ins. diam., bears N. 75° W., 76.3 ft. dist., with a healed blaze. (Record, 74.3 ft. dist.)

and a bearing tree mkd. by Powell, Deputy County Surveyor, in 1966

A fir, 46 ins. diam., bears N. 88° E., 17.8 ft. dist., with a healed blaze.

and a bearing tree mkd. by Smalley

A sawed hemlock stump, 16 ins. diam., bears N. 61 1/4° W., 31.1 ft. dist., with scribe marks S 16 BT with brass washer mkd. 2354 visible on partially healed blaze.

and new bearing trees

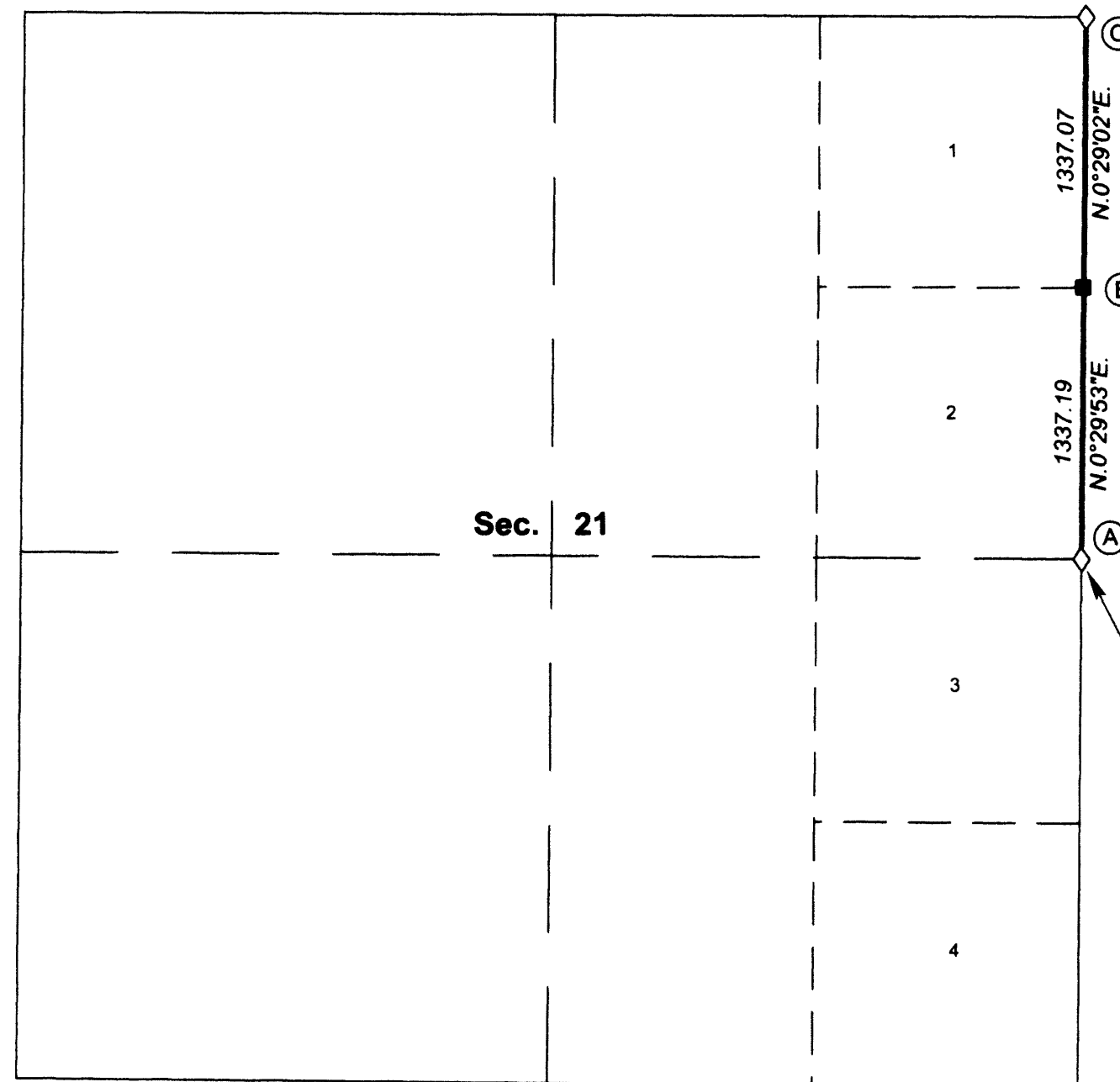
A fir, 10 ins. diam., bears S. 54 3/4° E., 14.2 ft. dist., mkd. T31S R4W S22 BT.

A fir, 7 ins. diam., bears S. 74° W., 10.2 ft. dist., mkd. T31S R4W S21 BT.

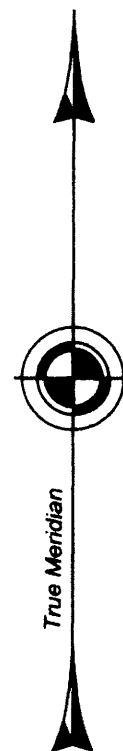
A fir, 6 ins. diam., bears N. 70 3/4° W., 44.2 ft. dist., mkd. X at breast height, and BT at base.

Sec. 16

Sec. 15



Latitude 42°51'47.21\"N.
Longitude 123°10'14.50\"W.
NAD 1983 (2011)



The history of official surveys pertaining to this survey is as follows:

In 1894, William M. Bushey, U.S. Deputy Surveyor, surveyed a portion of the subdivisional lines, as shown on the official plat of survey approved June 29, 1895.

In 1984-86, Wayne L. Rogers, Rick A. McMullen, and Lance J. Bishop, Cadastral Surveyors, resurveyed a portion of the east and west boundaries and subdivisional lines, and subdivided section 30, as shown on the official plat of survey accepted September 25, 1987.

The following local surveys filed in the Douglas County Surveyor's Office are referred to in subsequent corner descriptions and are referenced by surveyor's last name, Professional Land Surveyor (PLS) No., and year.

Date	Name and Registration Number	File Number
2000	Mark F. Smalley, PLS No. 2354	CS 65/37-29
2003	Max H. Hull, PLS No. 901	M 143-48

This plat constitutes the entire record of the dependent resurvey of a portion of the subdivisional lines, Township 31 South, Range 4 West, Willamette Meridian, Oregon, designed to restore the corners in their true original locations according to the best available evidence.

The directions of the lines are based on the true meridian as determined by Global Positioning System (GPS) techniques and carried forward by sustained angulation using conventional survey techniques. All measurements along the lines were derived through the use of GPS and conventional survey techniques. Measured distances and directions have been adjusted by computer software that incorporates a least squares adjustment routine. The adjusted mean bearings and mean horizontal ground elevation distances are reported to the nearest second and 0.01 foot.

The lottings and areas are as shown on the plat approved June 29, 1895.

Preliminary to the resurvey the lines of the official original surveys were retraced and a search was made for all corners, lines, other calls of record, and where available, collateral evidence of local surveys and corners. Identified corners were perpetuated in their original positions. The retracement data was thoroughly verified and only the true line field notes are given hereon.

Each new bearing tree has a 2 1/2 inch x 1/4 inch magnetic nail (Mag Nail) driven at the base on right side center, unless otherwise noted in the corner description.

Only those lines bounding Federal interest land were posted with aluminum angle posts, 5 feet long, 1 inch by 1 inch, blazed, painted, and tagged with BLM boundary signs.

The geographic position shown hereon was determined by a tie from a temporary GPS control point utilizing dual frequency, carrier phase GPS receivers, and processed using the National Geodetic Survey's Online Positioning User Service (OPUS).

The survey was executed in accordance with the specifications set forth in the Manual of Surveying Instructions (2009), and the special instructions approved March 26, 2013, for Group No. 2705, Oregon, by Arthur R. Rambo, Cadastral Surveyor, beginning April 4, 2013, and completed April 15, 2013. He was assisted by Kevin G. Mulder, Cadastral Surveyor, Ford J. Baker, Land Surveyor, USDA Forest Service and Dale A. Mustain and Todd R. Jennings, Surveying Technicians, and Lance P. Goucher, Surveying Technician, USDA Forest Service.

LEGEND

- ◇ Original corner previously remonumented
- Corner previously established or reestablished; remonumented this survey

UNITED STATES DEPARTMENT OF THE INTERIOR
BUREAU OF LAND MANAGEMENT

Portland, Oregon

The survey represented by this plat, having been correctly executed in accordance with the requirements of law and the regulations of this Bureau, is hereby accepted.

For the Director

Mary J. M. Heath

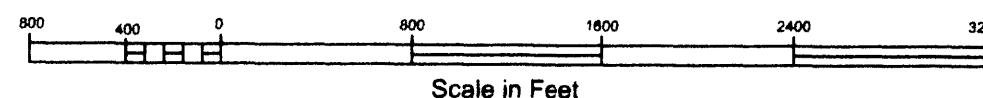
Chief Cadastral Surveyor of Oregon

October 6, 2014

Date

Arthur R. Rambo
Cadastral Surveyor

September 29, 2014
Date



OFFICIALLY FILED: 12/19/2014