

TOWNSHIP 31 SOUTH, RANGE 4 WEST, OF THE WILLAMETTE MERIDIAN, OREGON

SHEET 1 OF 2

RETRACEMENT AND REMONUMENTATION

FILED
 Date: 2/1/2010 By: JC
 This survey consists of:
 Map: MAP IN BOOK A COPY IN:
 Narrative: VOL. 56 PGS 21926-7
 Corner Rpt:
 DOUGLAS COUNTY
 SURVEYOR

This plat represents the entire record of the retracement of a portion of the subdivisional lines, and remonumentation of certain corner points, T. 31 S., R. 4 W., Willamette Meridian, Oregon.

A history of surveys pertaining to this retracement is as follows:

In 1894, William M. Bushey, U.S. Deputy Surveyor, surveyed portions of the south and west boundaries and a portion of the subdivisional lines.

This retracement and remonumentation was executed by A. Bert Skeesick, Cadastral Surveyor, and Robert H. Browning, Surveying Technician, beginning June 20, 2008, completed July 26, 2008, in accordance with the specification set forth in the Manual of Surveying Instructions, 1973; pursuant to Special Instructions dated March 16, 2007, approved March 21, 2007, which provided for the survey included under Group Number 2300, Oregon, and Assignment Instructions dated May 20, 2008. They were assisted by Thomas A. Hollamon, Marc A. Montpas and Karl NMI Krom, Surveying Technicians.

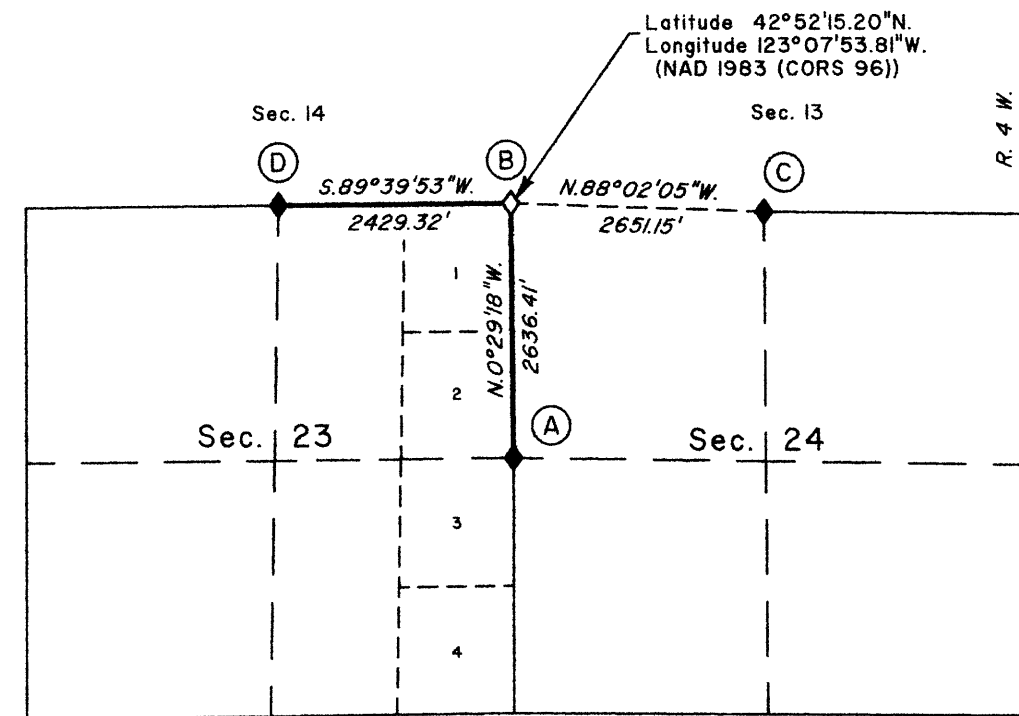
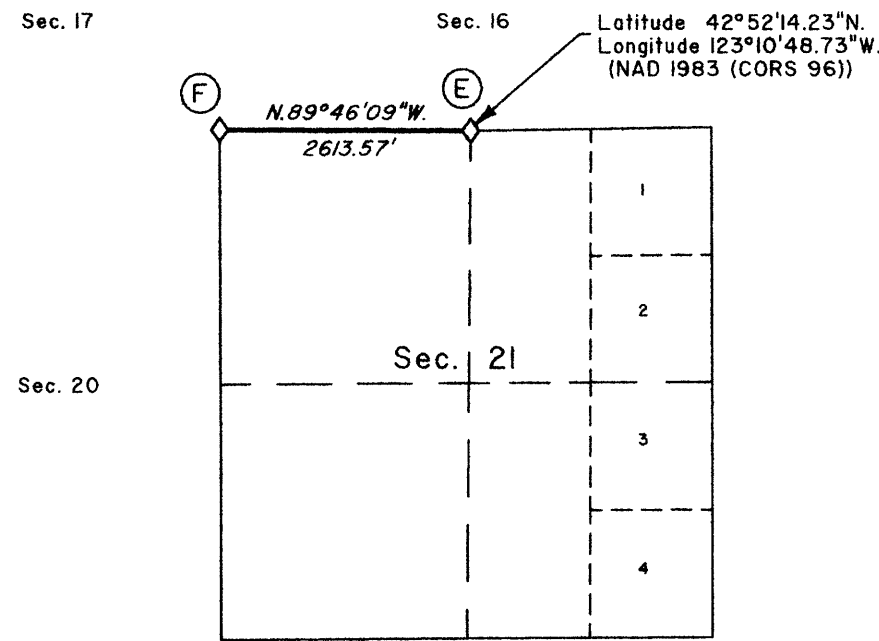
The retracement data was thoroughly verified and only the true line field notes are given hereon. Only those lines bounding or crossing public land were blazed.

The directions of the lines are based on the true meridian as determined by direct solar observation.

An analysis of the unadjusted field data assured a closure not exceeding 1:4000 in error. Measured distances and directions have been adjusted by computer software that incorporates a least squares adjustment routine. The adjusted bearings and distances are reported to the nearest second and 0.01 foot.

Each new bearing tree has a 2 1/2 inch x 1/4 inch magnetic nail (Mag Nail) driven at the base on right side center, unless otherwise noted in the corner description.

The geodetic positions shown hereon were determined by ties utilizing dual frequency carrier phase GPS receivers relative to the National Spatial Reference System.



We, A. Bert Skeesick, Cadastral Surveyor, and Robert H. Browning, Surveying Technician, HEREBY CERTIFY upon honor that in pursuance of Special Instructions bearing date of the 16th day of March, 2007, we have retraced a portion of the subdivisional lines, and remonumented certain corner points in Township 31 South, Range 4 West, Willamette Meridian Oregon. Said retracement has been executed in strict conformity with said Special Instructions for the survey of the Public Lands of the United States, and in specific manner described on this plat.

LEGEND

- ◊ Original corner previously remonumented
- ◆ Original corner remonumented this survey

UNITED STATES DEPARTMENT OF THE INTERIOR
 BUREAU OF LAND MANAGEMENT

Portland, Oregon

The retracement represented by this plat, having been correctly executed in accordance with the requirements of law and the regulations of this Bureau, is hereby accepted.

For the Director

Mary J. M. Hartzel

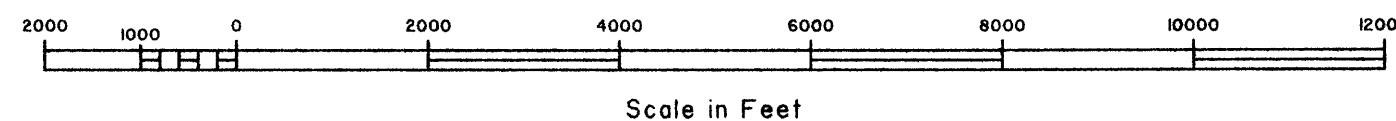
Chief Cadastral Surveyor of Oregon

October 29, 2009

Date

A. Bert Skeesick 10/22/2009
 Cadastral Surveyor Date

Robert H. Browning 10/22/09
 Surveying Technician Date



OFFICIALLY FILED: 1/12/2010

FILED
 Date: 2/1/2010 By: JC
 This survey consists of:
 Map: MAP IN BOOK A COPY IN:
 Narrative: VOL. 56 PGS 21926-7
 Corner Rpt:
 DOUGLAS COUNTY
 SURVEYOR

TOWNSHIP 31 SOUTH, RANGE 4 WEST, OF THE WILLAMETTE MERIDIAN, OREGON

SHEET 2 OF 2

RETRACEMENT AND REMONUMENTATION

(A) The 1/4 sec. cor. of secs. 23 and 24, perpetuated by John H. Markham, Jr., Oregon Professional Logging Engineer No. 2880, in 1958, filed in the Douglas County Surveyors Office, C.S. File No. 42/391, determined at record bearing and distance from the remains of an original bearing tree

A sawed fir stump, 49 ins. diam., bears N. 53° E., 22.4 ft. dist., with scribe mark S visible on opened blaze.

from which the remains of bearing trees mkd. by Markham

A sawed fir stump, 26 ins. diam., bears S. 73 1/4° E., 34.0 ft. dist., with a healed double blaze.

A maple, 39 ins. diam., bears S. 57 1/2° W., 64.0 ft. dist., with no marks visible.

A bent iron pipe, 24 ins. long, 1/2 in. diam., was found lying on the ground nearby.

At the corner point

Set a stainless steel post, 28 ins. long, 2 1/2 ins. diam., 25 ins. in the ground, with brass cap mkd.

T 31 S	R 4 W
1/4	
S 23	S 24
2008	

from which

A fir, 12 ins. diam., bears N. 9° E., 7.7 ft. dist., mkd. 1/4 S24 BT.

A fir, 18 ins. diam., bears S. 50 3/4° W., 19.0 ft. dist., mkd. 1/4 S23 BT.

Deposit a magnet in a white plastic case at the base of the stainless steel post, and bury the iron pipe alongside the stainless steel post.

(B) The cor. of secs. 13, 14, 23 and 24, perpetuated by John H. Markham, Jr., Oregon Professional Logging Engineer No. 2880, in 1958, filed in the Douglas County Surveyors Office, C.S. File No. 42/391, further perpetuated by the Douglas County Surveyors Office in 1965 and 1998, filed in the Douglas County Surveyors Record of Government Corners Renewed, T. 31 S., R. 4 W., Point Identifier No. 600400, monumented with an iron post, 1 1/2 ins. diam., firmly set, projecting 10 ins. above the ground, with brass cap mkd.

COUNTY SURVEYORS OFFICE	
T 31 S	R 4 W
S 14	S 13
S 23	S 24
1965	

from which the remains of original bearing trees

A roothole bears S. 69° E., 36.3 ft. dist., with a decayed fir trunk, size indeterminate, lying alongside, with no marks visible.

A roothole bears S. 29° W., 6.6 ft. dist., with a fallen fir trunk, 28 ins. diam., lying alongside, with no marks visible.

and the remains of bearing trees mkd. by the Douglas County Surveyors Office in 1965

A fir, 18 ins. diam., bears N. 33 1/2° E., 20.3 ft. dist., with a healed double blaze.

A sawed fir stump, 35 ins. diam., bears N. 89 3/4° E., 92.3 ft. dist., with a healed double blaze.

A fir, 15 ins. diam., bears S. 71° W., 39.6 ft. dist., with a healed double blaze.

A roothole bears N. 2 1/2° W., 105.1 ft. dist., with a decayed fir trunk, size indeterminate, lying alongside, with no marks visible.

and bearing trees mkd. by the Douglas County Surveyors Office in 1998

A fir, 8 ins. diam., bears S. 46 1/4° E., 7.8 ft. dist., with a healed double blaze.

A fir, 6 ins. diam., bears N. 65° W., 1.4 ft. dist., with a healed double blaze.

(C) The 1/4 sec. cor. of secs. 13 and 24, perpetuated by John H. Markham, Jr., Oregon Professional Logging Engineer No. 2880, in 1958, filed in the Douglas County Surveyors Office, C.S. File No. 42/391, determined at record bearing and distance from the remains of an original bearing tree

A sawed fir stump, 24 ins. diam., bears N. 17 1/4° E., 10.6 ft. dist., with fragmentary scribe marks visible on the bark.

At the corner point

Set a stainless steel post, 28 ins. long, 2 1/2 ins. diam., 22 ins. in the ground, with brass cap mkd.

T 31 S	R 4 W
S 13	
1/4	
S 24	
2008	

from which

A fir, 12 ins. diam., bears N. 13 1/2° E., 32.0 ft. dist., mkd. 1/4 S13 BT.

A fir, 5 ins. diam., bears N. 85° W., 11.1 ft. dist., mkd. 1/4 S24 BT.

Deposit a magnet in a white plastic case at the base of the stainless steel post.

Corner is located in large rock slide area, on a steep SW. slope.

(D) The 1/4 sec. cor. of secs. 14 and 23, perpetuated by John H. Markham, Jr., Oregon Professional Logging Engineer No. 2880, in 1959, filed in the Douglas County Surveyors Office, C.S. File No. 42/391, monumented with a bent iron pipe, 3/4 in. diam., projecting 26 ins. above the ground, from which the remains of an original bearing tree

A fir snag, 28 ins. diam., bears S. 60 1/2° E., 30.0 ft. dist., with a healed blaze.

and the remains of bearing trees mkd. by Markham

A fir, 25 ins. diam., bears S. 83 1/4° E., 28.1 ft. dist., with scribe marks 1/4 S23 T31S R4W BT visible on the bark.

A fir, 40 ins. diam., bears S. 4 3/4° E., 30.0 ft. dist., with scribe marks 1/4 S23 X BT visible on the bark.

A fir snag, 32 ins. diam., bears S. 3/4° E., 61.1 ft. dist., with a healed blaze.

At the corner point

Set a stainless steel post, 28 ins. long, 2 1/2 ins. diam., 23 ins. in the ground, with brass cap mkd.

T 31 S	R 4 W
S 14	
1/4	
S 23	
2008	

Deposit a magnet in a white plastic case at the base of the stainless steel post, and bury the iron pipe, 40 ins. long, 3/4 in. diam., alongside the stainless steel post.

(E) The 1/4 sec. cor. of secs. 16 and 21, perpetuated by John H. Markham, Jr., Oregon Professional Logging Engineer No. 2880, in 1958, filed in the Douglas County Surveyors Office, C.S. File No. 42/391, further perpetuated by the Douglas County Surveyors Office in 1966, and further perpetuated by Mark F. Smalley, Oregon Professional Land Surveyor No. 2354, in 2000, filed in the Douglas County Surveyors Office, C.S. File No. 65/37-27, monumented with an iron post, 1 1/4 ins. diam., firmly set, projecting 10 ins. above the ground, with brass cap mkd.

COUNTY SURVEYORS OFFICE	
T 31 S	R 4 W
S 16	
1/4	
S 21	
1966	

from which the remains of an original bearing tree

A sawed fir stump, 23 ins. diam., bears S. 29 1/4° W., 29.0 ft. dist., with fragmentary scribe marks visible on a partially healed blaze.

and the remains of a bearing tree mkd. by Markham

A fir snag, 26 ins. diam., bears N. 69° W., 64.5 ft. dist., with a healed blaze.

and bearing trees mkd. by Smalley

A fir, 12 ins. diam., bears N. 70° E., 21.6 ft. dist., with a healed blaze.

A fir, 13 ins. diam., bears S. 29 1/4° E., 13.0 ft. dist., with a healed blaze.

A fir, 17 ins. diam., bears S. 70 1/4° W., 20.6 ft. dist., with a healed blaze.

A fir, 19 ins. diam., bears N. 28° W., 17.1 ft. dist., with a healed blaze.

(F) The cor. of secs. 16, 17, 20 and 21, perpetuated by the Douglas County Surveyors Office in 1966, filed in the Douglas County Surveyors Record of Government Corners Renewed, T. 31 S., R. 4 W., Point Identifier No. 300400, further perpetuated by Ronald L. Rice, Oregon Professional Land Surveyor No. 54633, in 2008, filed in the Douglas County Surveyors Office, Map File No. M156-22, monumented with an iron post, 1 1/4 ins. diam., firmly set, projecting 12 ins. above the ground, with brass cap mkd.

COUNTY SURVEYORS OFFICE	
T 31 S	R 4 W
S 17	S 16
S 20	S 21
1966	

from which the remaining original bearing tree

A fir, 37 ins. diam., bears S. 71 1/2° E., 15.5 ft. dist., with a healed blaze.

and bearing trees mkd. by the Douglas County Surveyors Office

A hemlock, 23 ins. diam., bears S. 66 1/2° W., 11.3 ft. dist., with a healed blaze.

A fir, 20 ins. diam., bears N. 68° W., 20.5 ft. dist., with a healed blaze.

and a bearing tree mkd. by Rice

A hemlock, 8 ins. diam., bears N. 57° E., 32.1 ft. dist., with scribe marks T31S R4W S16 BT visible on an open blaze.

UNITED STATES DEPARTMENT OF THE INTERIOR
 BUREAU OF LAND MANAGEMENT

Portland, Oregon

This plat is strictly conformable to the approved field notes, and the survey, having been correctly executed in accordance with the requirements of law and the regulations of this Bureau, is hereby accepted.

For the Director

Mary J. M. Hartsel

Chief Cadastral Surveyor of Oregon

October 29, 2009

Date