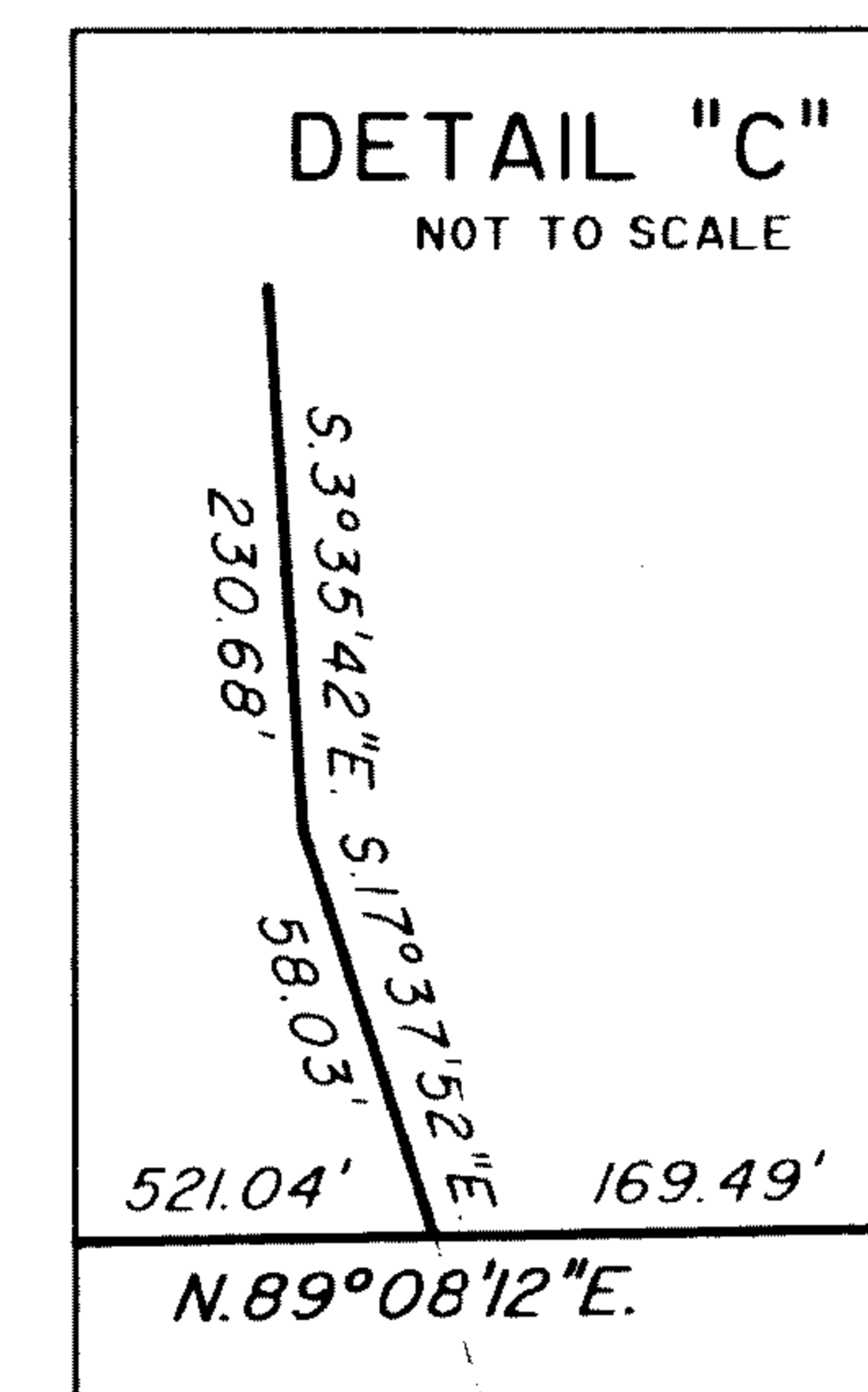
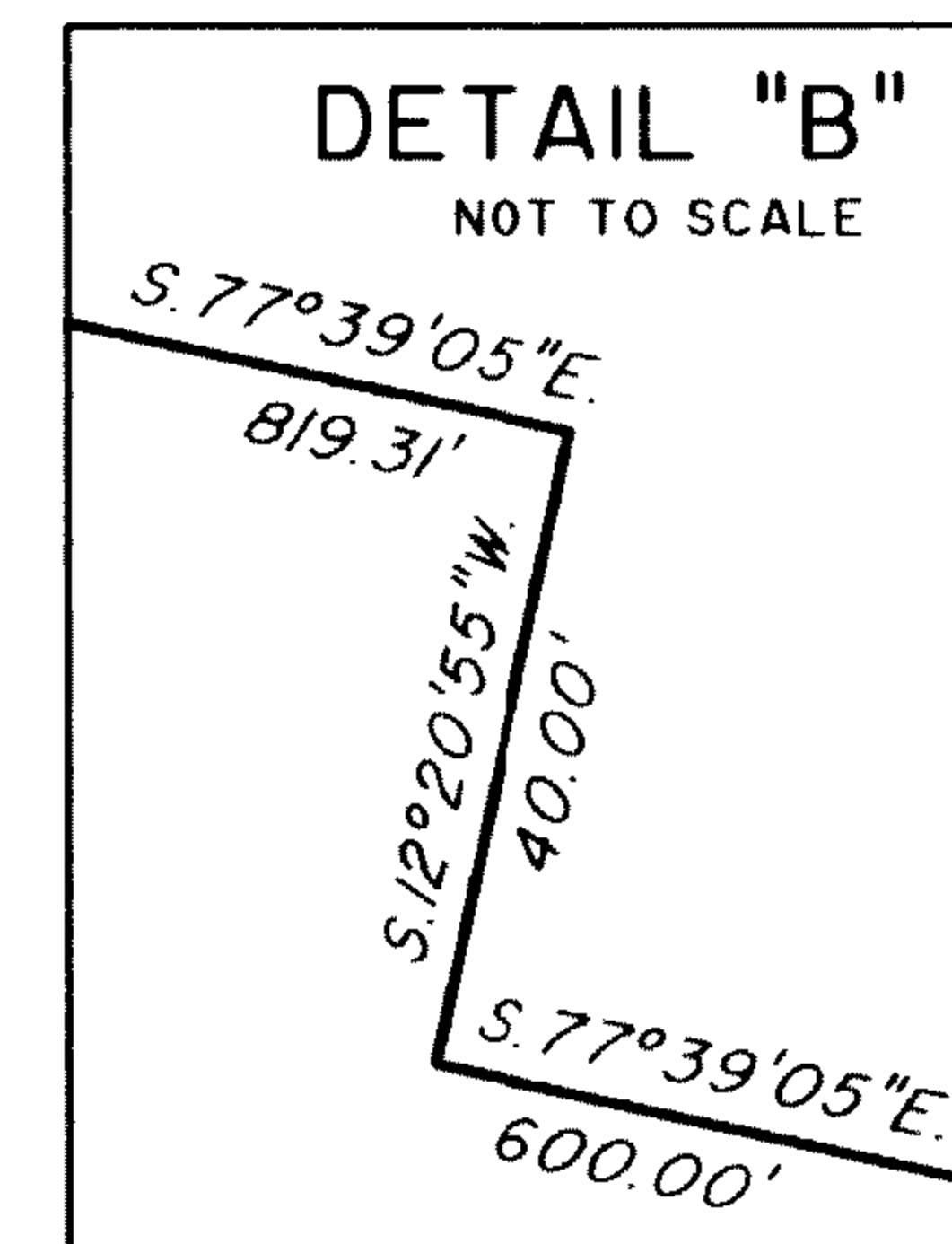
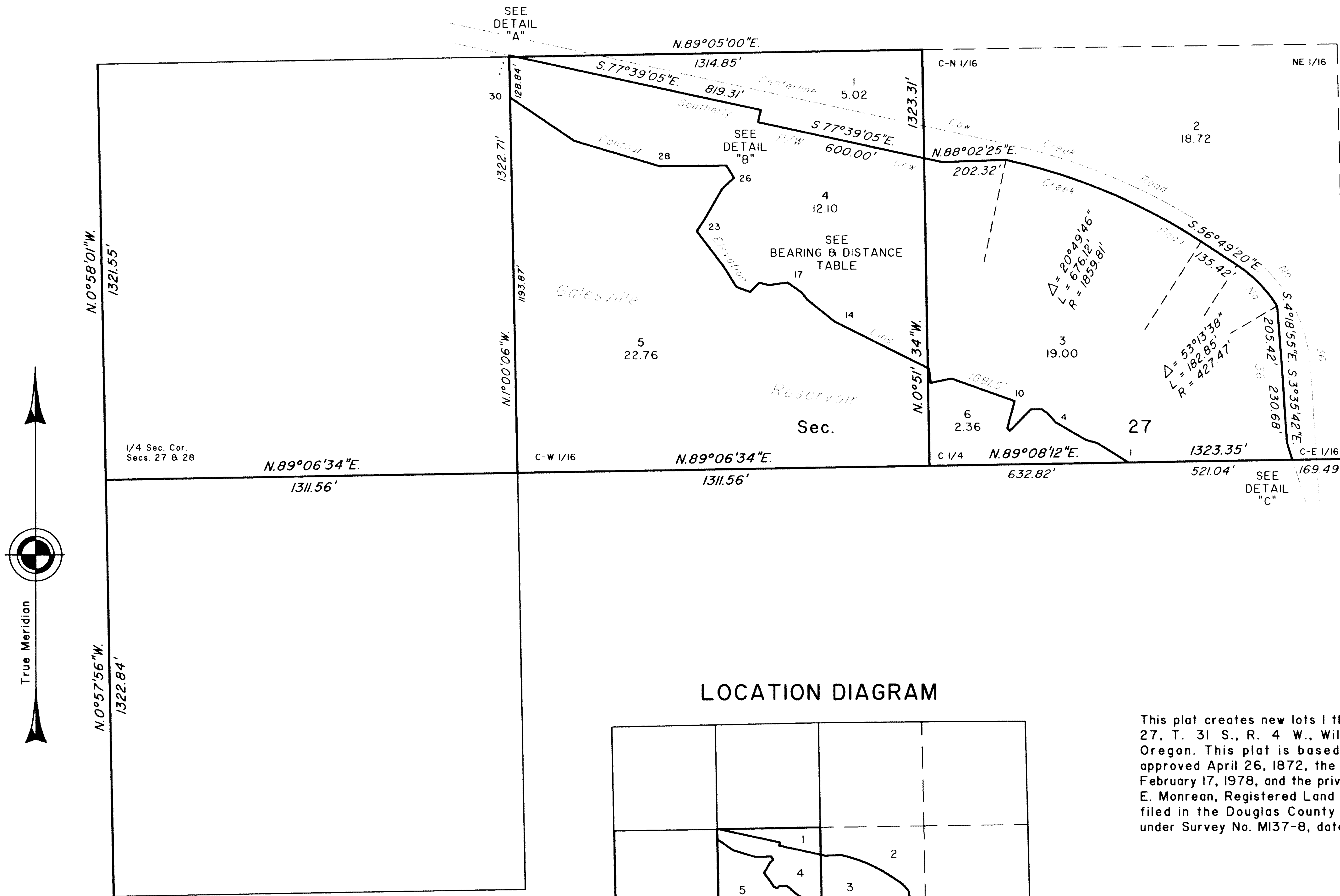


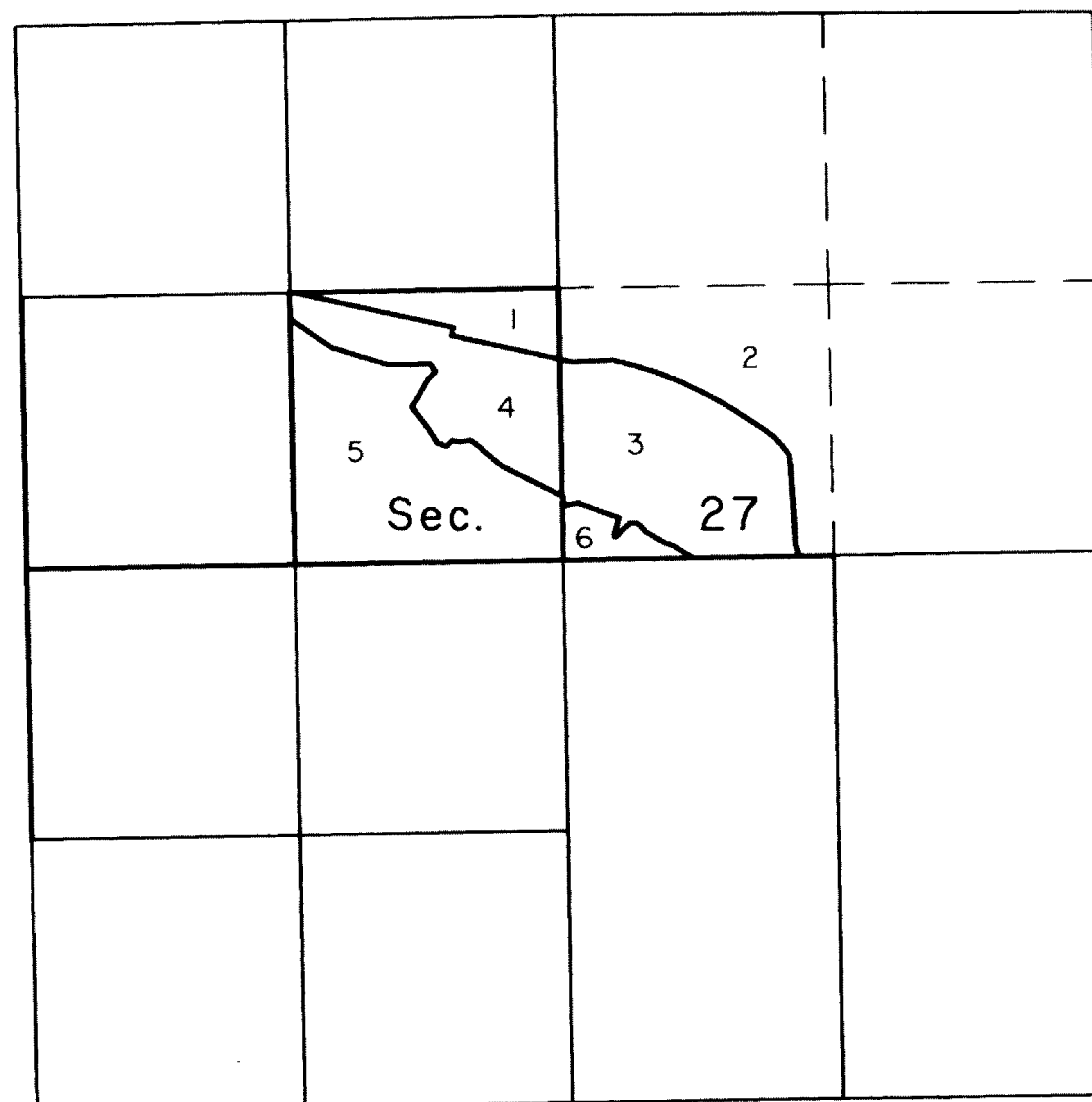
TOWNSHIP 31 SOUTH, RANGE 4 WEST, OF THE WILLAMETTE MERIDIAN, OREGON

SUPPLEMENTAL PLAT OF SECTION 27



BEARING & DISTANCE TABLE CONTOUR ELEVATION LINE 1881.5'		
1		
2	N.58°13'01"W.	117.61'
3	N.74°14'12"W.	36.94'
4	N.59°36'24"W.	111.42'
5	N.41°13'14"W.	39.28'
6	N.56°28'33"W.	22.12'
7	S.89°25'36"W.	33.56'
8	S.44°36'58"W.	96.71'
9	N.40°09'55"W.	11.72'
10	N.14°59'11"E.	89.43'
11	N.70°11'35"W.	212.74'
12	S.78°37'36"W.	67.80'
13	N. 6°43'13"W.	45.39'
14	N.63°20'44"W.	335.03'
15	N.51°17'06"W.	110.99'
16	N.38°19'18"W.	30.18'
17	N.54°27'28"W.	53.74'
18	S.82°15'55"W.	60.45'
19	N.75°26'33"W.	31.63'
20	S.44°47'15"W.	41.39'
21	N.70°21'46"W.	46.40'
22	N.32°00'08"W.	75.19'
23	N.37°31'31"W.	141.57'
24	N.33°55'33"E.	41.79'
25	N.30°11'13"E.	113.94'
26	N.46°07'56"E.	52.80'
27	N.31°45'26"W.	44.99'
28	S.89°35'35"W.	212.63'
29	N.73°23'04"W.	283.57'
30	N.55°38'55"W.	247.02'

LOCATION DIAGRAM



This plat creates new lots 1 through 6 of section 27, T. 31 S., R. 4 W., Willamette Meridian, Oregon. This plat is based on the GLO plat approved April 26, 1872, the BLM plat accepted February 17, 1978, and the private survey by Larry E. Monrean, Registered Land Surveyor No. 1830, filed in the Douglas County Surveyor's Office under Survey No. M137-8, dated May 14, 2001.

UNITED STATES DEPARTMENT OF THE INTERIOR
BUREAU OF LAND MANAGEMENT

Portland, Oregon

June 4, 2001

This plat, showing amended lottings, is based upon the official records and, having been correctly prepared in accordance with the regulations of this Bureau, is hereby accepted.

For the Director

Chief Cadastral Surveyor of Oregon

