

TOWNSHIP 31 SOUTH, RANGE 4 WEST, OF THE WILLAMETTE MERIDIAN, OREGON. DEPENDENT RESURVEY AND SUBDIVISION OF SECTIONS.

This plat represents a dependent resurvey of a portion of the south boundary and a portion of the subdivisional lines, T. 31 S., R. 4 W., Willamette Meridian, Oregon, designed to restore the corners in their true original locations according to the best available evidence, and the subdivision of sections 27, 28, 33, and 34.

The areas are as shown on the plat approved April 26, 1872.

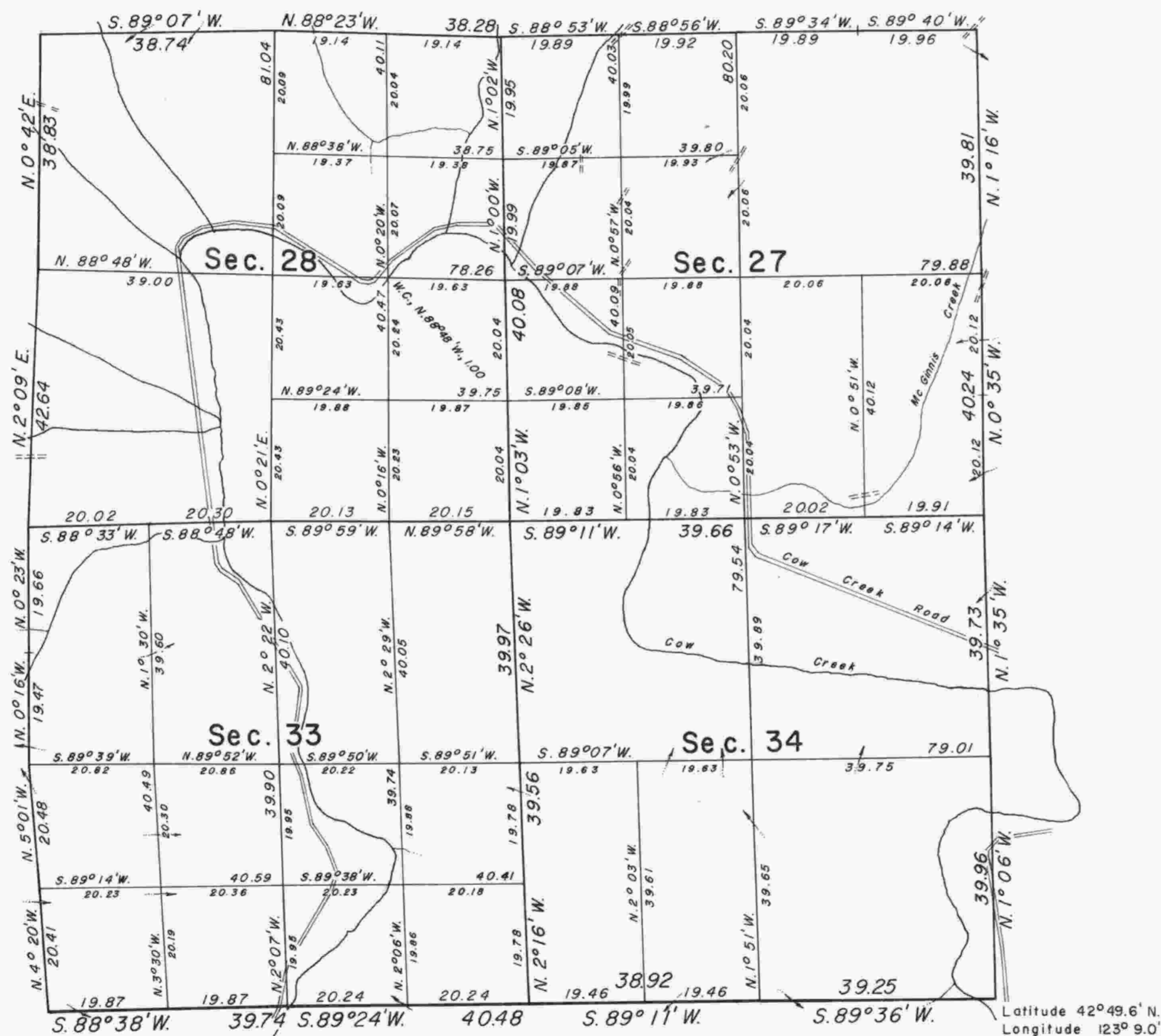
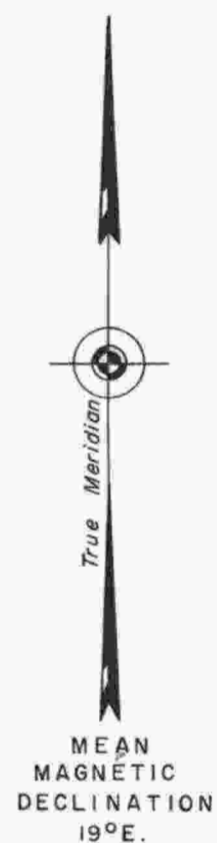
The south boundary and portion of the subdivisional lines of the township were surveyed by William H. Byars, in 1871.

A portion of the south boundary and subdivisional lines were retraced and a portion of the subdivisional lines was surveyed by William M. Bushey, in 1894.

A portion of the south boundary of the township was retraced by Carl S. Nicklin, in 1897.

Certain original corners on the south boundary of the township were remonumented without survey, by Hans W. Thielsen, in 1959.

Survey executed by Lynn M. Roseberry and Larry D. Evans, Cadastral Surveyors, from July 17, 1972 to September 18, 1972, under Special Instructions dated May 19, 1972, which provided for the surveys included under Group No. 778, Oregon.

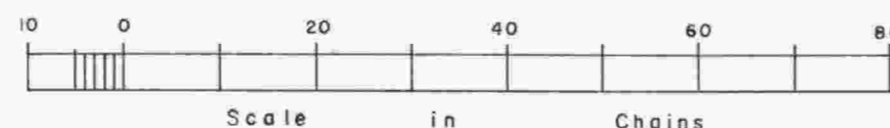


UNITED STATES DEPARTMENT OF THE INTERIOR
BUREAU OF LAND MANAGEMENT
Washington, D.C. February 17, 1978

This plat is strictly conformable to the approved field notes, and the survey, having been correctly executed in accordance with the requirements of law and the regulations of this Bureau, is hereby accepted.

For the Director

Acting Chief, Division of Cadastral Survey



Timber in this area consists of fir, pine, cedar, hemlock, yew, madrone, oak, alder, maple, chinquapin, and dogwood.