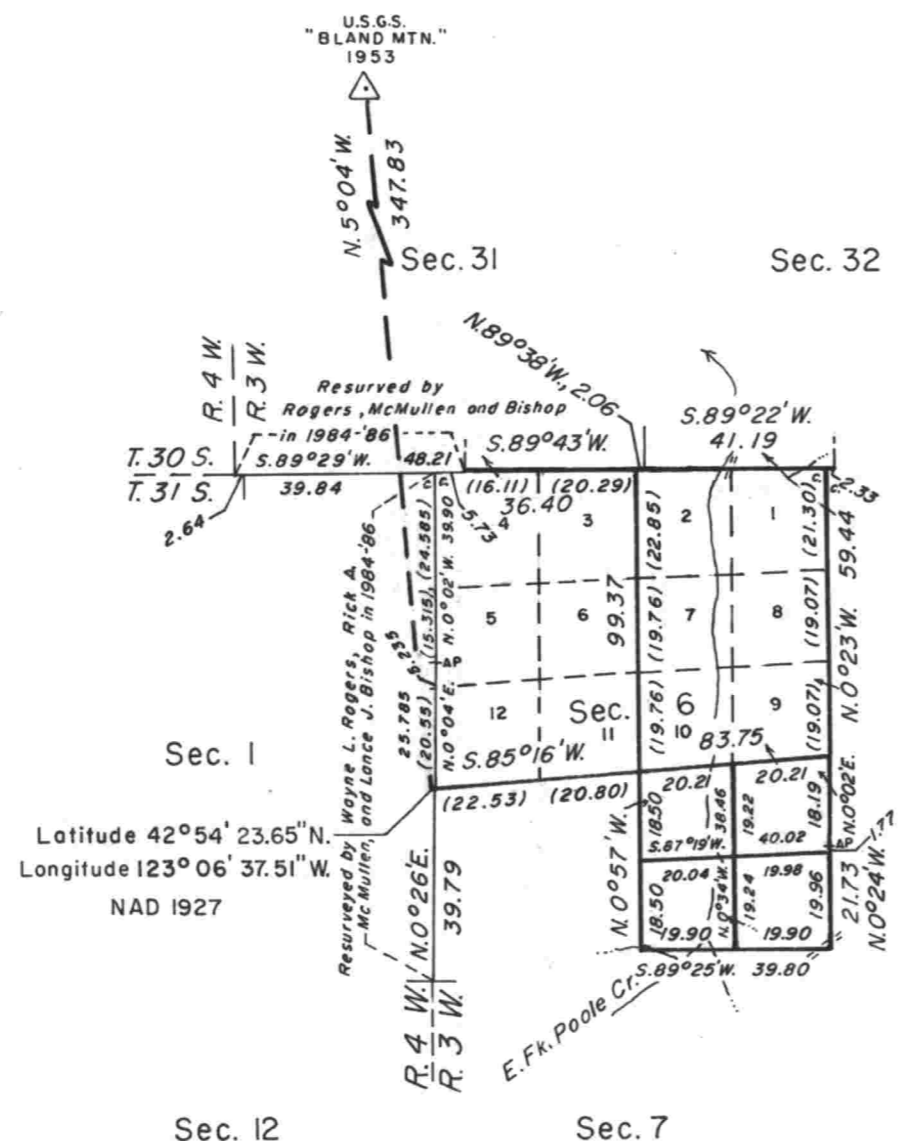


# TOWNSHIP 31 SOUTH, RANGE 3 WEST, OF THE WILLAMETTE MERIDIAN, OREGON

## DEPENDENT RESURVEY AND SUBDIVISION OF SECTIONS



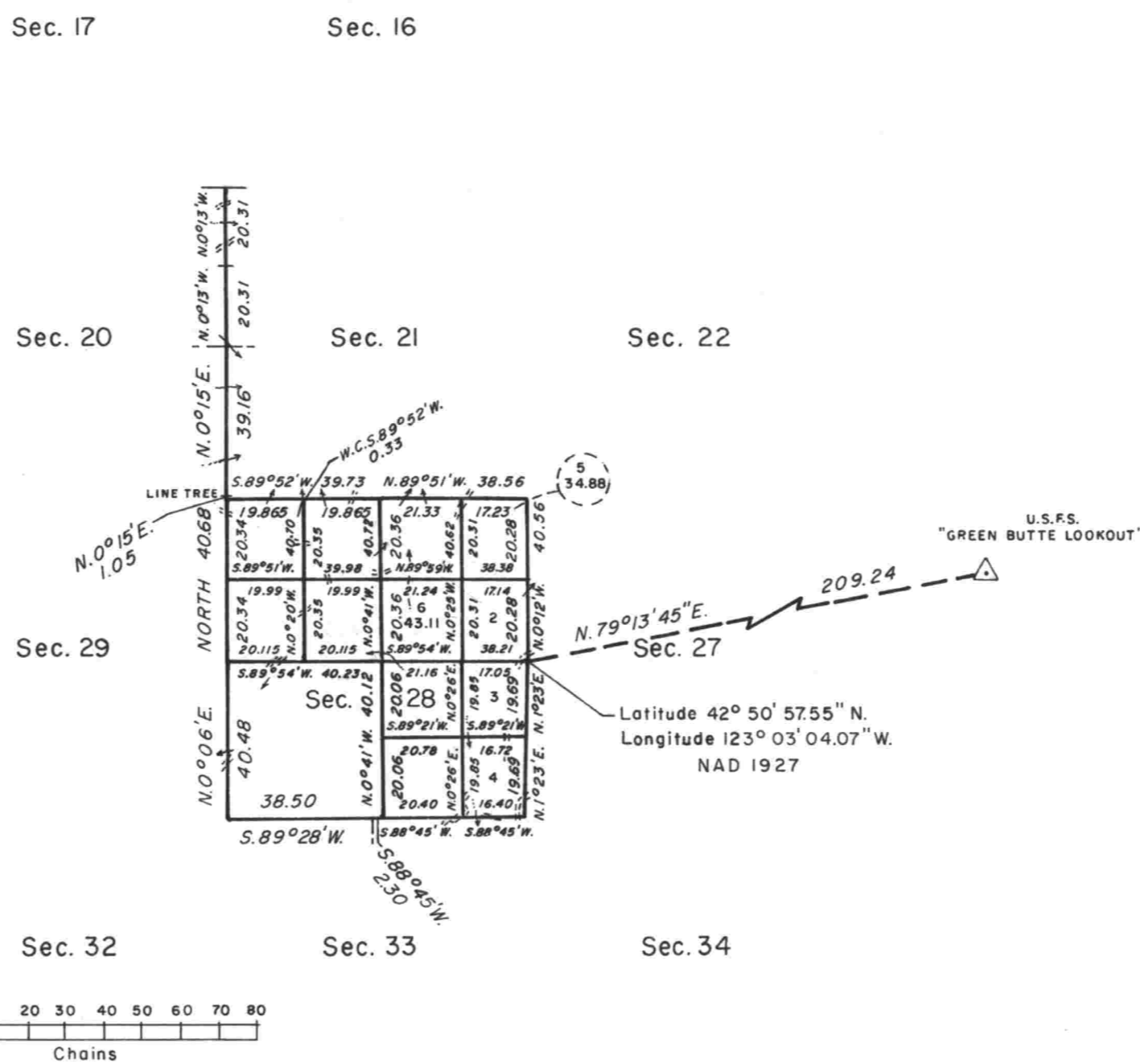
A history of surveys is contained in the field notes.

This plat represents a dependent resurvey of a portion of the south boundary, T.30S., R.3W., and the dependent resurvey of a portion of the subdivisional lines, T.31S., R.3W., Willamette Meridian, Oregon, designed to restore the corners in their true original locations according to the best available evidence, and the subdivision of sections 6 and 28.

Except as shown hereon, the lottings and areas are as shown on the plat approved June 29, 1895.

The survey was executed by Boyd W. Peterson and Dale T. Bedell, Cadastral Surveyors, beginning September 12, 1985, and completed August 26, 1986, pursuant to Special Instructions dated June 7, 1985, and March 21, 1986, under Group Numbers 1277 and 1315, Oregon.

Timber in this area consists of fir, hemlock, cedar, pine, yew, oak, madrone, maple and chinkapin.



UNITED STATES DEPARTMENT OF THE INTERIOR  
BUREAU OF LAND MANAGEMENT

Portland, Oregon February 10, 1989

This plat is strictly conformable to the approved field notes, and the survey, having been correctly executed in accordance with the requirements of law and the regulations of this Bureau, is hereby accepted.

For the Director

*Wayne M. Gardner*  
Chief Cadastral Surveyor of Oregon