

TOWNSHIP 31 SOUTH, RANGE 3 WEST, OF THE WILLAMETTE MERIDIAN, OREGON.

DEPENDENT RESURVEY AND SUBDIVISION

Sec. 4

Sec. 3

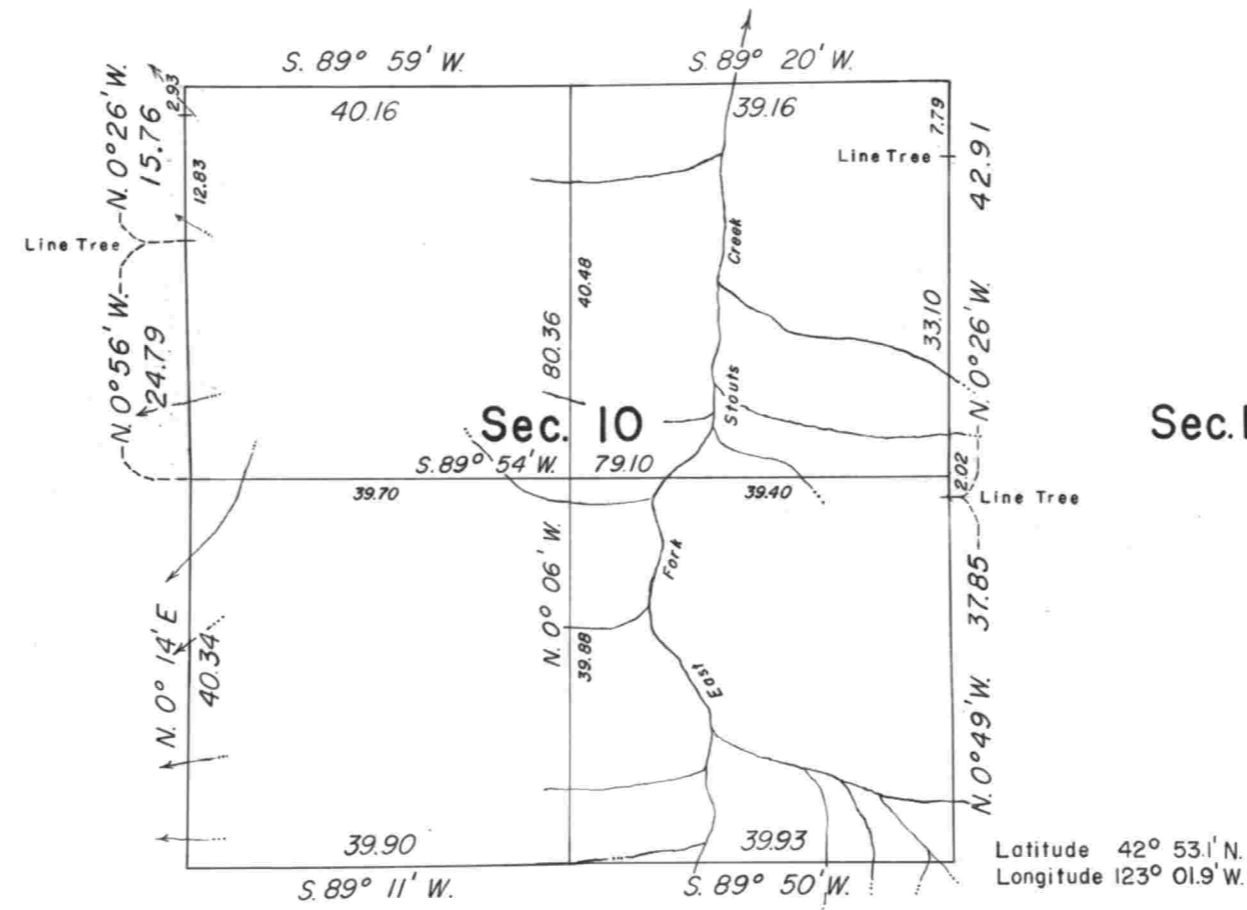
Sec. 2

This plat represents the reestablishment of a portion of the subdivisional lines, designed to restore the corners in their true original locations according to the best available evidence, and the subdivision of section 10. The lottings and areas are as shown on the plat approved June 29, 1895.

William M. Bushey surveyed a portion of the subdivisional lines in 1894.

These surveys were executed by John M. Jelley, July 29 to August 18, 1964, under Special Instructions dated July 22, 1964, for Group No. 555, Oregon.

Sec. 9



Sec. 11

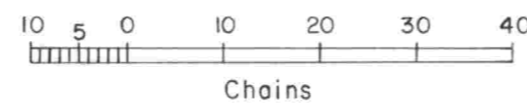
Sec. 16

Sec. 15

Sec. 14



Mean
Magnetic
Declination
19°18' East



Area resurveyed: 640 Acres

Timber in this area consists of fir, hemlock, cedar, pine, alder, madrone, dogwood, maple, chinquapin, and yew.

UNITED STATES DEPARTMENT OF THE INTERIOR
BUREAU OF LAND MANAGEMENT
Washington, D. C. October 12, 1965

This plat is strictly conformable to the approved field notes, and the survey, having been correctly executed in accordance with the requirements of law and the regulations of this Bureau, is hereby accepted.

For the Director

Chief, Division of Engineering