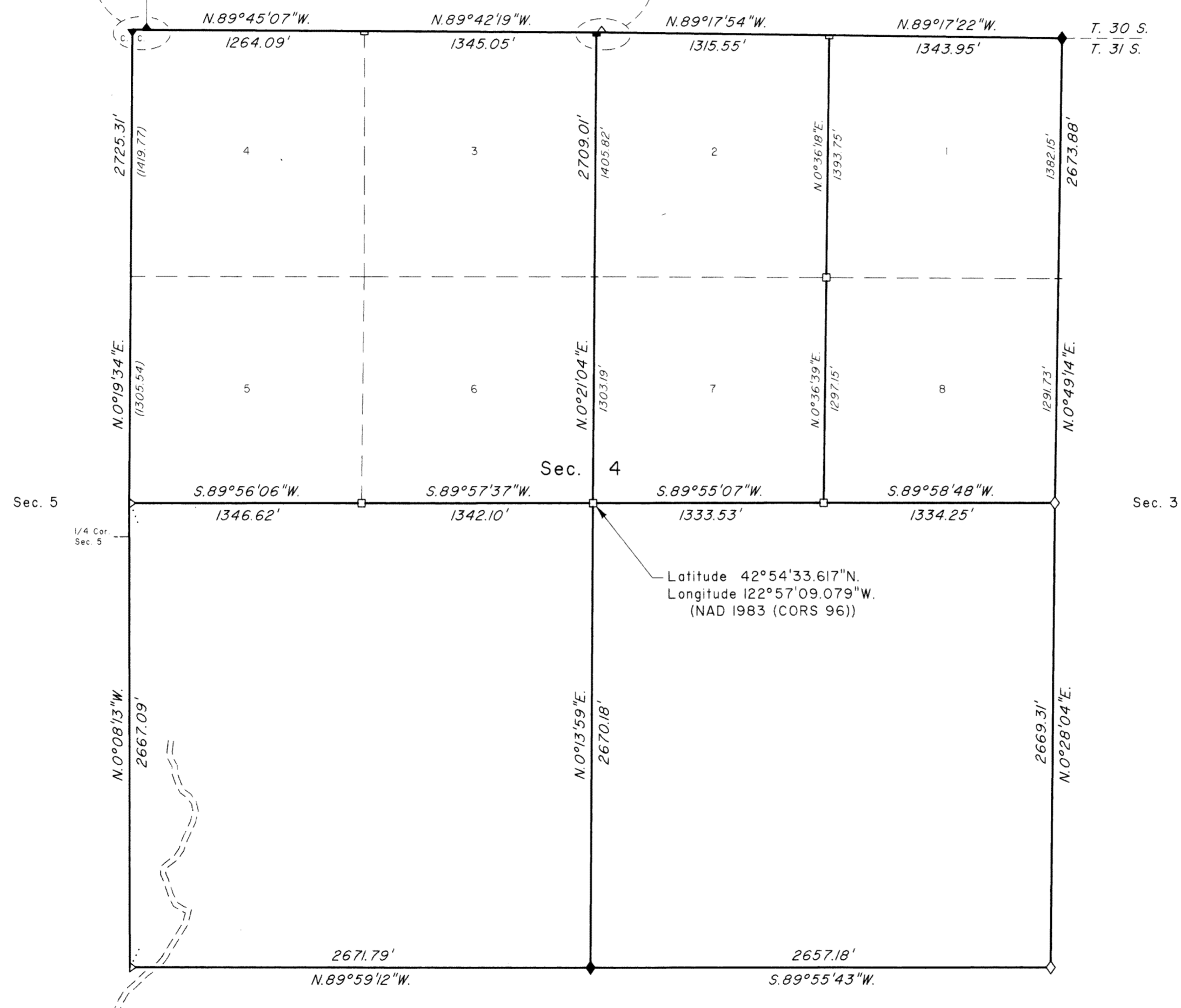
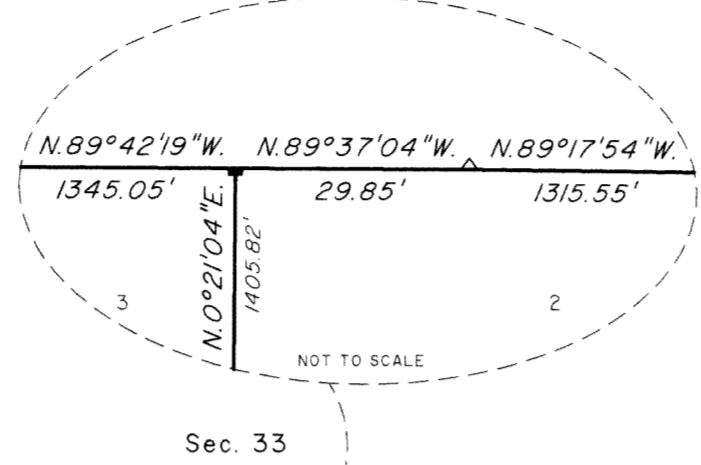
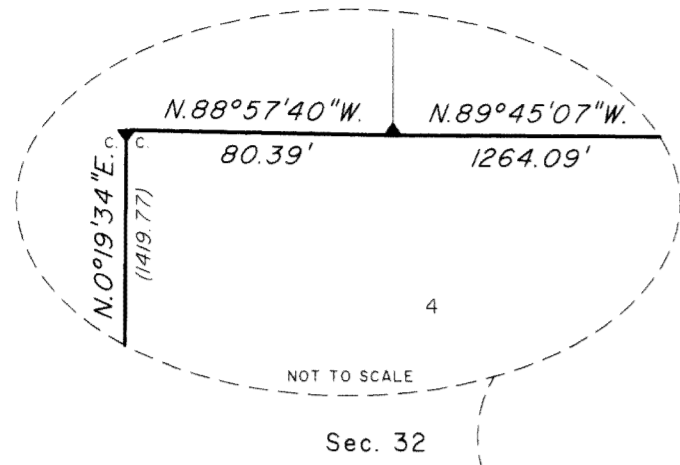


TOWNSHIP 31 SOUTH, RANGE 2 WEST, OF THE WILLAMETTE MERIDIAN, OREGON

DEPENDENT RESURVEY AND SUBDIVISION OF SECTION 4

FILED
 Date: 10/29/2007 By: JC
 This survey consists of:
 Map:
 Narrative: VOL 55
 Corner Rpt: PGs 21371-89
 DOUGLAS COUNTY
 SURVEYOR



A history of surveys is contained in the field notes.

This plat represents a dependent resurvey of a portion of the north boundary and subdivisional lines, T. 31 S., R. 2 W., Willamette Meridian, Oregon, designed to restore the corners in their true original locations according to the best available evidence, and the subdivision of section 4.

The survey was performed utilizing both conventional (directly measured angles and distances) and NAVSTAR Global Positioning System (GPS) satellite techniques. The GPS measurements utilized dual frequency, carrier phase GPS receivers. The baselines were computed in and adjusted by least squares analysis using Trimble Geomatics Office (TGO), version 1.62. Conventionally measured distances and directions have been adjusted by computer software that incorporates a least squares adjustment routine. The adjusted bearings and distances are reported to the nearest second and 0.01 foot.

The lottings and areas are as shown on the plat approved February 20, 1858 and June 18, 1909.

The survey was executed by Timothy J. Moore, Cadastral Surveyor, and Robert H. Browning, Surveying Technician, beginning April 7, 2004, and completed May 12, 2004, pursuant to Special Instructions dated March 3, 2004, under Group Number 2071, Oregon.

LEGEND

- ◊ Original corner previously remonumented
- ◆ Original corner remonumented this survey
- Corner previously established or reestablished
- Corner previously established or reestablished; remonumented this survey

UNITED STATES DEPARTMENT OF THE INTERIOR
 BUREAU OF LAND MANAGEMENT

Portland, Oregon September 13, 2007

This plat is strictly conformable to the approved field notes, and the survey, having been correctly executed in accordance with the requirements of law and the regulations of this Bureau, is hereby accepted.

For the Director

John P. Farnsworth, Acting
 Chief Cadastral Surveyor of Oregon

