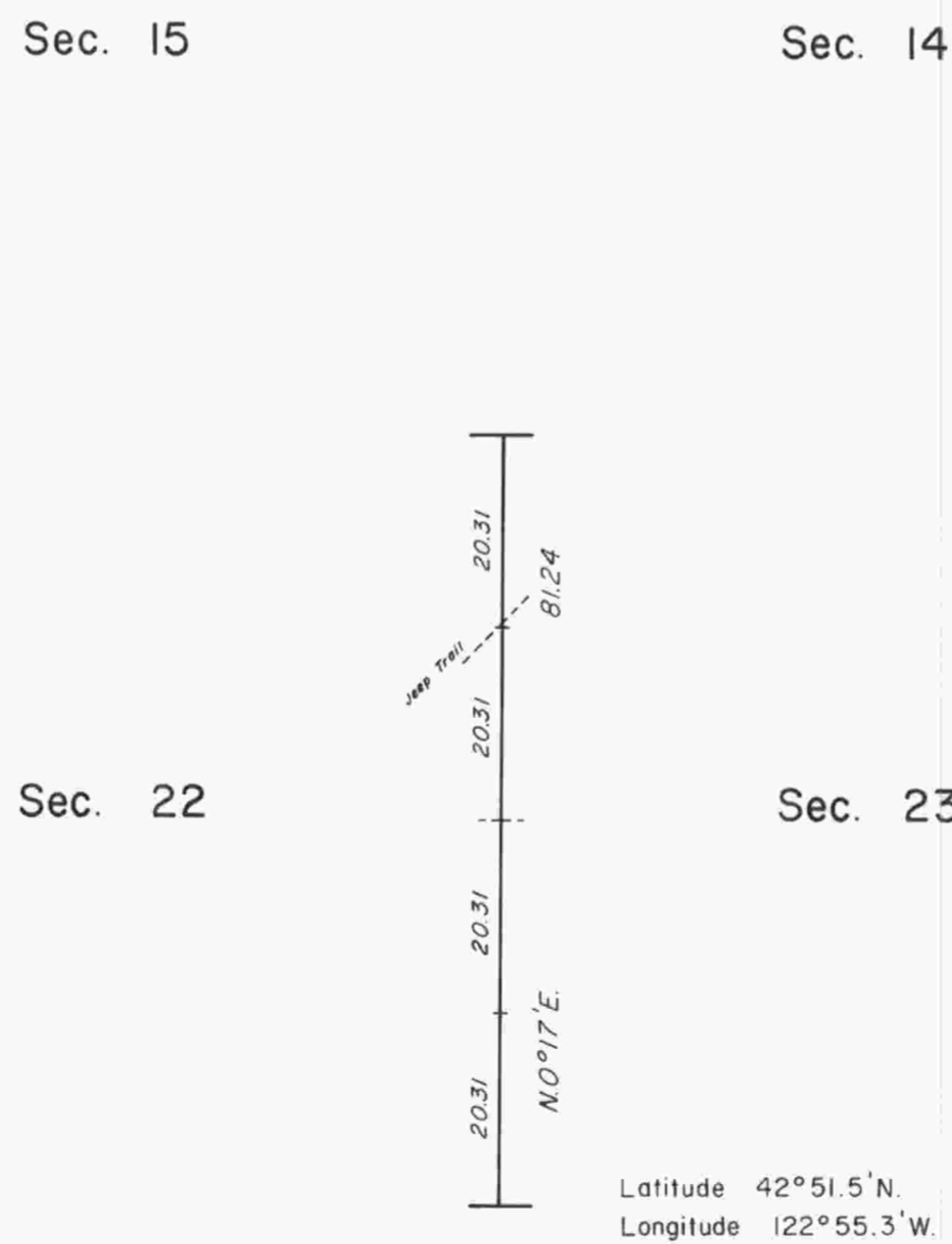
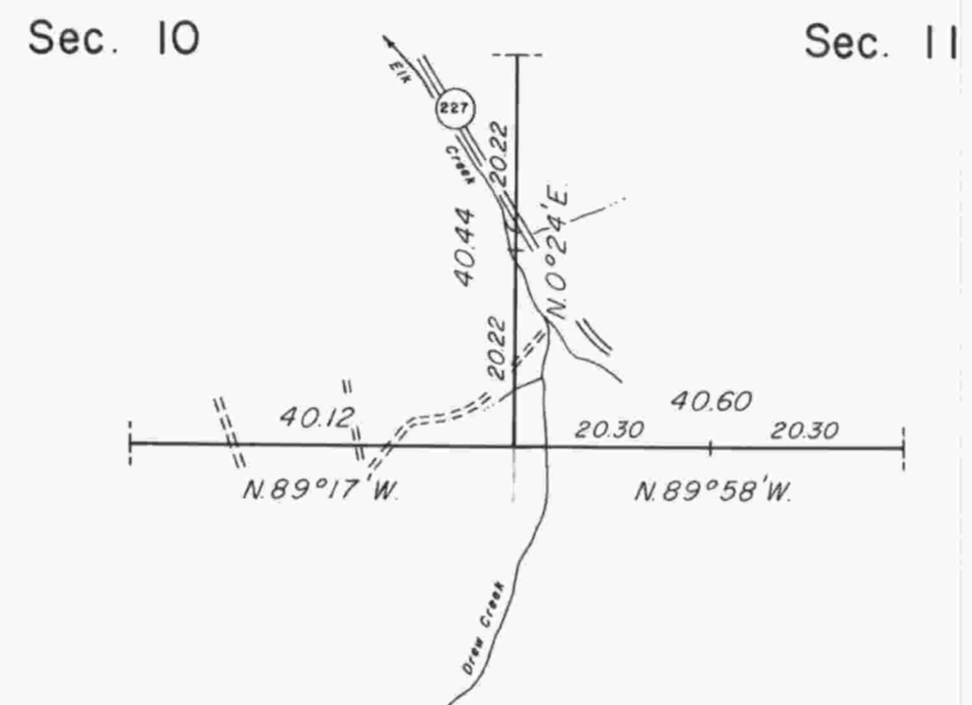


TOWNSHIP 31 SOUTH, RANGE 2 WEST, OF THE WILLAMETTE MERIDIAN, OREGON.

DEPENDENT RESURVEY



True Meridian

Mean magnetic declination
20° 00' E.



Timber in this area consists of fir, cedar, hemlock, pine, madrone, and alder.

This plat represents a retracement and reestablishment of a portion of the subdivisional lines of T. 31 S., R. 2 W., Willamette Meridian, Oregon, designed to restore the corners in their true original locations according to the best available evidence.

In 1857, Dennis Hathorn surveyed a portion of the subdivisional lines, as shown on the official plat of survey approved February 20, 1858.

In 1906 - 08 Fred Mensch completed the survey of the subdivisional lines, as shown on the official plat of survey approved June 18, 1909. In so doing, Mensch resurveyed a portion of the Hathorn lines, and in many instances established closing corners at points of intersection with the previous survey.

The resurvey was executed by Donevan C. Harris, Cadastral Surveyor, beginning August 10, 1971 and completed August 17, 1971, pursuant to Special Instructions dated August 3, 1971, which provide for the surveys under Group No. 755, Oregon

UNITED STATES DEPARTMENT OF THE INTERIOR
BUREAU OF LAND MANAGEMENT
Washington, D.C. July 20, 1972

This plat is strictly conformable to the approved field notes, and the survey, having been correctly executed in accordance with the requirements of law and the regulations of this Bureau, is hereby accepted.

For the Director

Clark F. Sumner

Chief, Division of Cadastral Survey