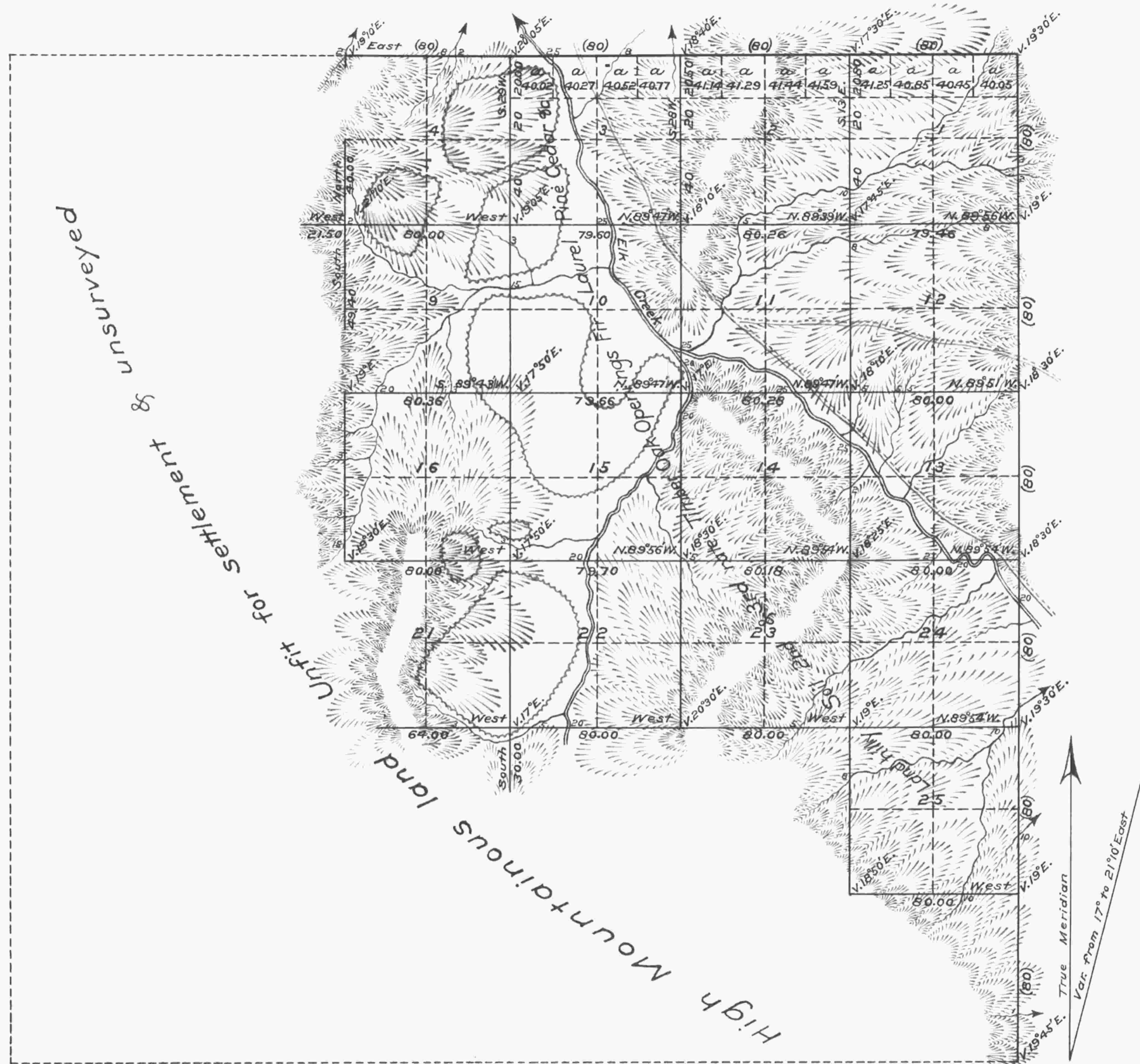


TOWNSHIP N°31 SOUTH RANGE N°2 WEST WILLAMETTE MERIDIAN OREGON



High Mountainous Land
Unit for Settlement & unsurveyed

Scale 40 chains to an inch

Surveys designated	By whom surveyed	Contract		Am't of surveys			When surveyed
		No.	Date	Miles	chains	links	
Township Lines	Dennis Hathorn	73	June 8th, 1857	00	00	00	February 20th., 1858
Subdivisions	Dennis Hathorn	73	June 8th, 1857	32	45	72	February 20th., 1858
Total number of Acres	10249.64						

The above Map of Fractional Township No. 31 South of Range No. 2 West of the Willamette Meridian, Territory of Oregon, is strictly conformable to the field notes of the survey thereof on file in this office, which have been examined and approved.

(Signed)
 Surveyor General's Office
 Salem, February 20th., 1858
 John S. Zieber
 Sur. Gen. of Oregon

Public Survey Office,
 Portland, Oregon, July 10, 1928
 I certify the above to be a correct copy of the original plat on file in this office.

Joseph A. Gannop
 Office Cadastral Engineer.