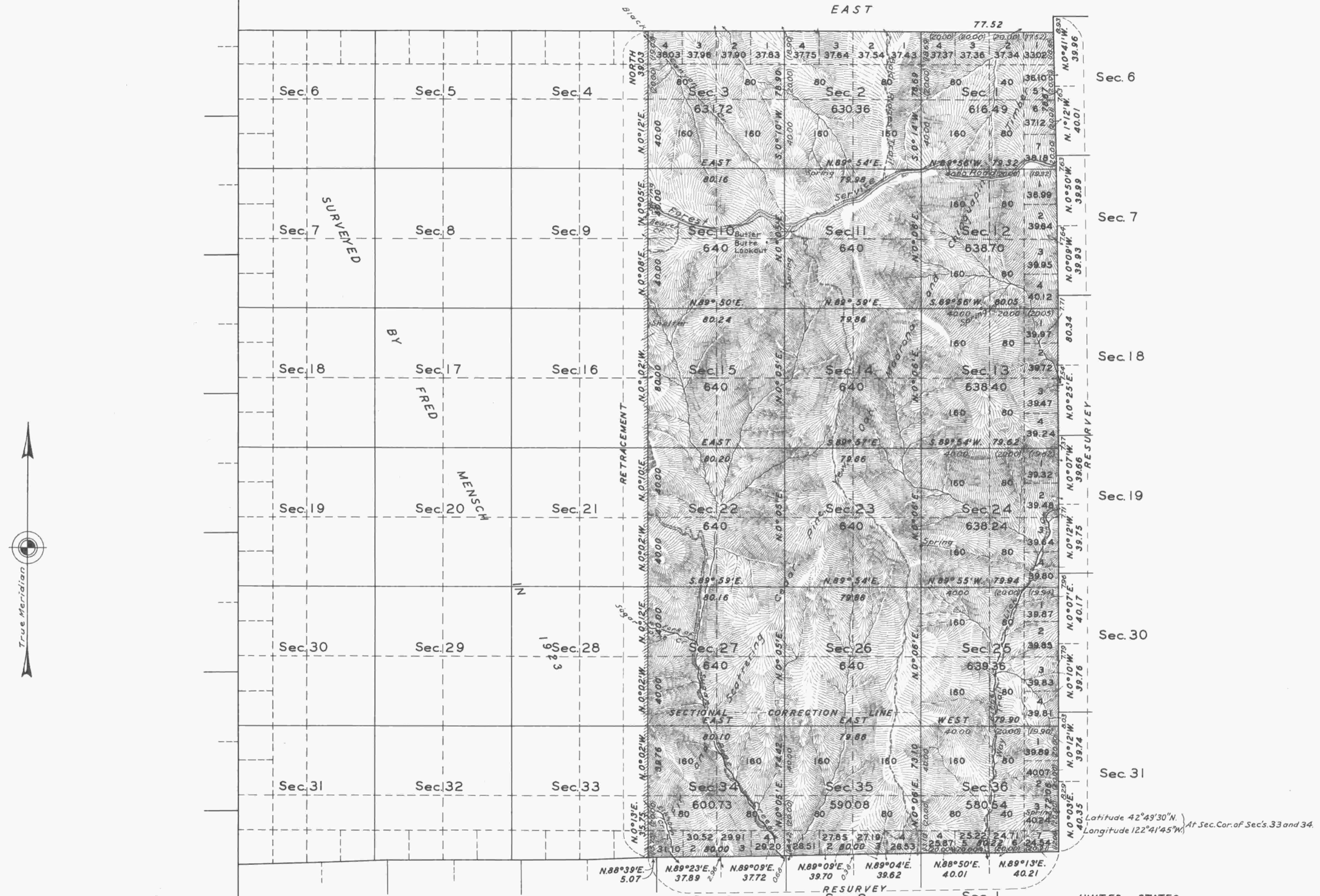


# TOWNSHIP No. 31 SOUTH, RANGE No. 1 EAST, OF THE WILLAMETTE MERIDIAN, OREGON.



Mean Magnetic Declination 21° E. Scale: 40 Chains to an Inch. Area Surveyed 11324.62 Acres.

LINES DESIGNATED	BY WHOM SURVEYED	GROUP		MILEAGE		WHEN SURVEYED	
		No	DATE	MLS.	CHS.	BEGUN	COMPLETED
Exterior	Leonard Carter	175	Nov. 21, 1935	11	77.40	Sept. 29, 1936	Nov. 27, 1936
Subdivisional				32	58.80		
Miscellaneous					8.93		

Office of the Supervisor of Surveys,  
 Denver, Colorado, June 11, 1937.  
 The above plat of Township No. 31 South, Range No. 1 East, of the Willamette Meridian, Oregon, is strictly conformable to the field notes of the survey thereof which have been examined and approved.

*Wm. H. Johnson*  
 Supervisor of Surveys.

UNITED STATES  
 DEPARTMENT OF THE INTERIOR  
 GENERAL LAND OFFICE  
 Washington, D.C., Feb. 14, 1938.  
 The survey represented by this plat having been correctly executed in accordance with the requirements of law and the regulations of this office, is hereby accepted.

*Automatta Furd P.*  
 Assistant Commissioner.

Latitude 42° 49' 30" N. Longitude 122° 41' 45" W. At Sec. Cor. of Secs. 33 and 34.

J.K.M. B.L.F.

R.R.C. 70