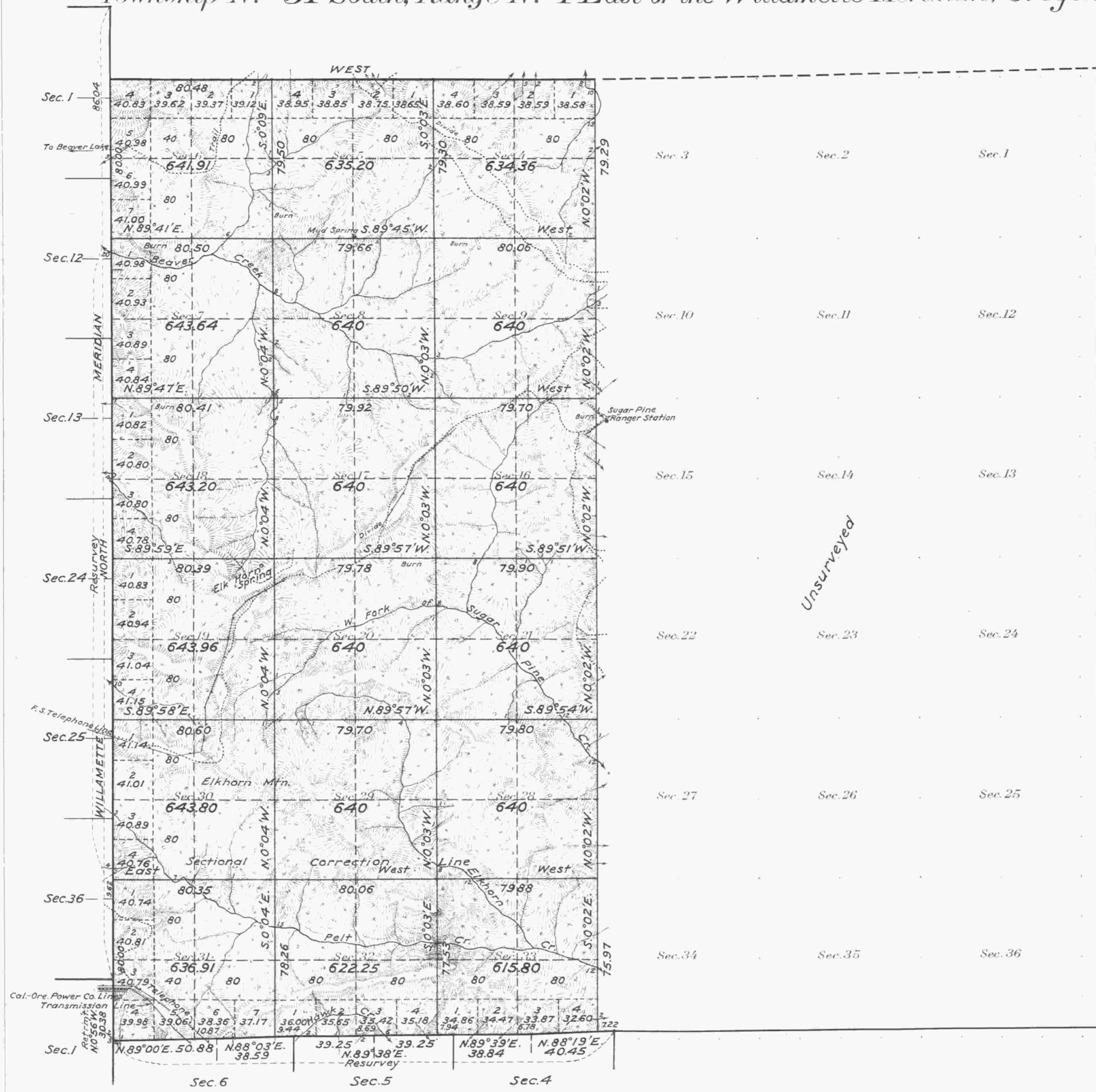


Township N^o 31 South, Range N^o 1 East of the Willamette Meridian, Oregon.



Areas in Acres	
Public Land	11481.03
Indian Reservation	
Indian Allotments	
Mineral Claims	
Water Surface	
Total Area	11481.03

Scale 40 Chains to an inch
 Mean Magnetic Declination 21° E.
 Lat. 42° 51' N.
 Long. 122° 44' 30" W. } At camp in NE 1/4 Sec. 25, T. 31 S., R. 1 W.

Surveys Designated	By Whom Surveyed	Group		Amount of Surveys			When Surveyed	
		No.	Date	Mls.	chs.	lks.	Begun	Completed
North Tp. Boundary	Fred Mensch U.S.C.E.	90	June 7, 1922	3	00	48	Aug. 7, 1923	Aug. 8, 1923
South " "	Resur. " "	"	" " "	3	07	26	July 12, "	July 14, "
Willamette Meridian	" " "	"	" " "	"	"	"	" 13, "	Aug. 7, "
Subdivisions	" " "	"	" " "	32	70	56	" 12, "	" 11, "
South Tp. Boundary by Rufus S. Moore under Contract N ^o 475 in 1883.								
East " "	" Peter Applegate	"	" " "	"	"	571	" 1891.	
Willamette Meridian	" Homer D. Angell	"	" " "	"	"	746	" 1902.	

The above map of Township No. 31 South, Range No. 1 East of the Willamette Meridian, Oregon is strictly conformable to the field notes of the survey thereof on file in this office, which have been examined and approved.

U. S. Surveyor General's Office.
 Portland Oregon, Feb. 18, 1925.

Wesley W. Cairness
 Surveyor General.