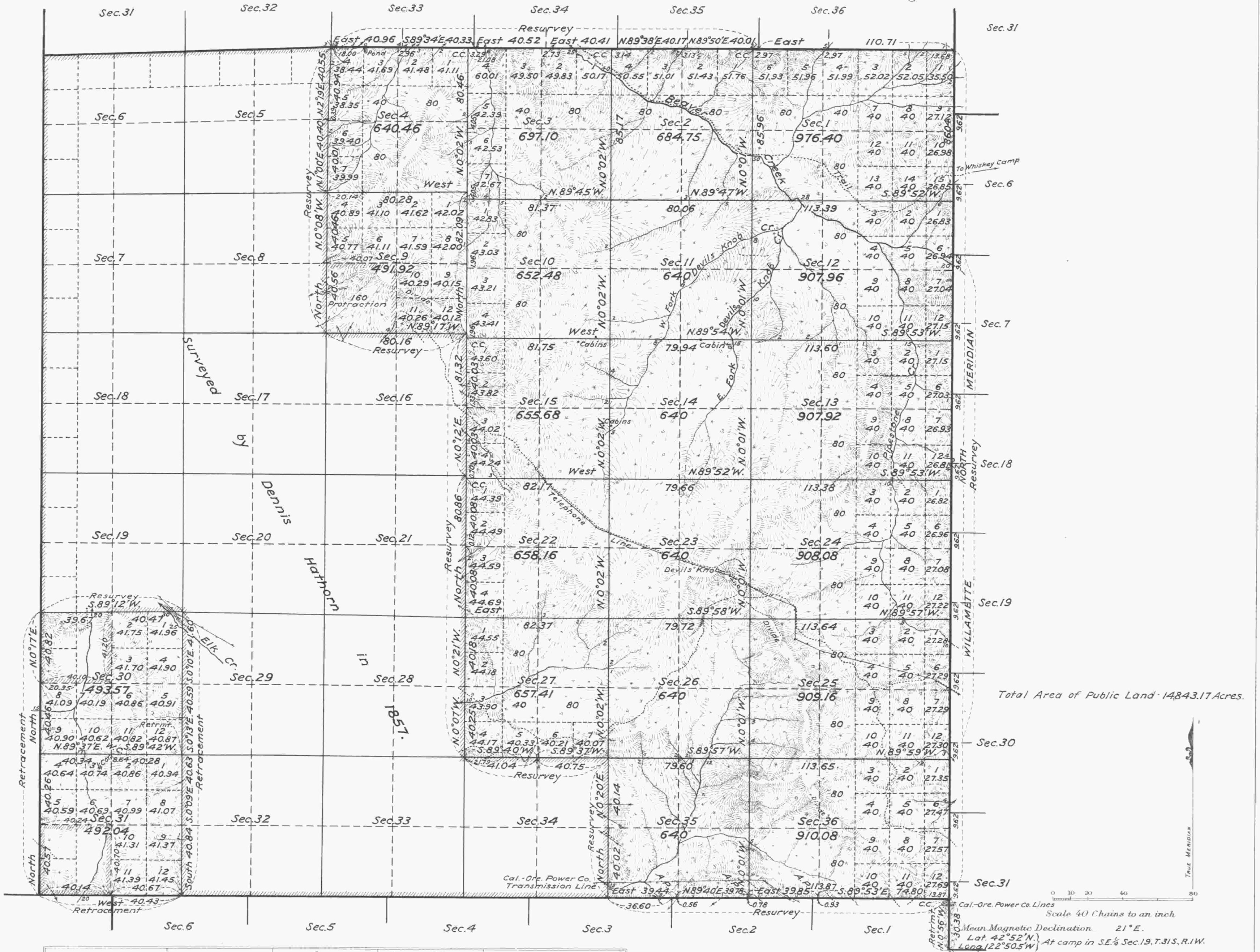


Accepted March 9, 1925

Township N^o 31 South, Range N^o 1 West of the Willamette Meridian, Oregon.



Total Area of Public Land 14,843.17 Acres.

Surveys Designated	By Whom Surveyed	Group		Amount of Surveys		When Surveyed	
		No.	Date	Mls.	chs.	lks.	When Surveyed
Portion of N. Tp. Bdy.	Fred Mensch U.S.C.E.	90	June 7, 1922	1	30	71	Nov. 13, 1922
Tp. Bdy. (Retrmt-Resur.)	"	"	"	14	75	61	Oct. 12, "
Subdivisions	"	"	"	11	42	13	" 11, "
"	"	"	"	30	77	24	" 14, "
Connections	"	"	"	0	16	11	Nov. 5, "
Portion of N.W. & S.Tp. Bdy. & Subdivisions by Dennis Hathorn under Contract N ^o 73 in 1857.							
S. Township Bdy.	Rufus S. Moore	"	"	"	"	"	" 475 - 1883
W. Bdy. of Sec. 31	Fred Mensch	"	"	"	"	"	" 766 - 1908
Willamette Meridian	Homer D. Angell	"	"	"	"	"	" 746 - 1902

The above map of Township No. 31 South, Range No. 1 West of the Willamette Meridian, Oregon is strictly conformable to the field notes of the survey thereof on file in this office, which have been examined and approved.

U.S. Surveyor General's Office.
 Wesley M. Cariness
 Surveyor General.
 Portland Oregon, Feb. 18, 1925.