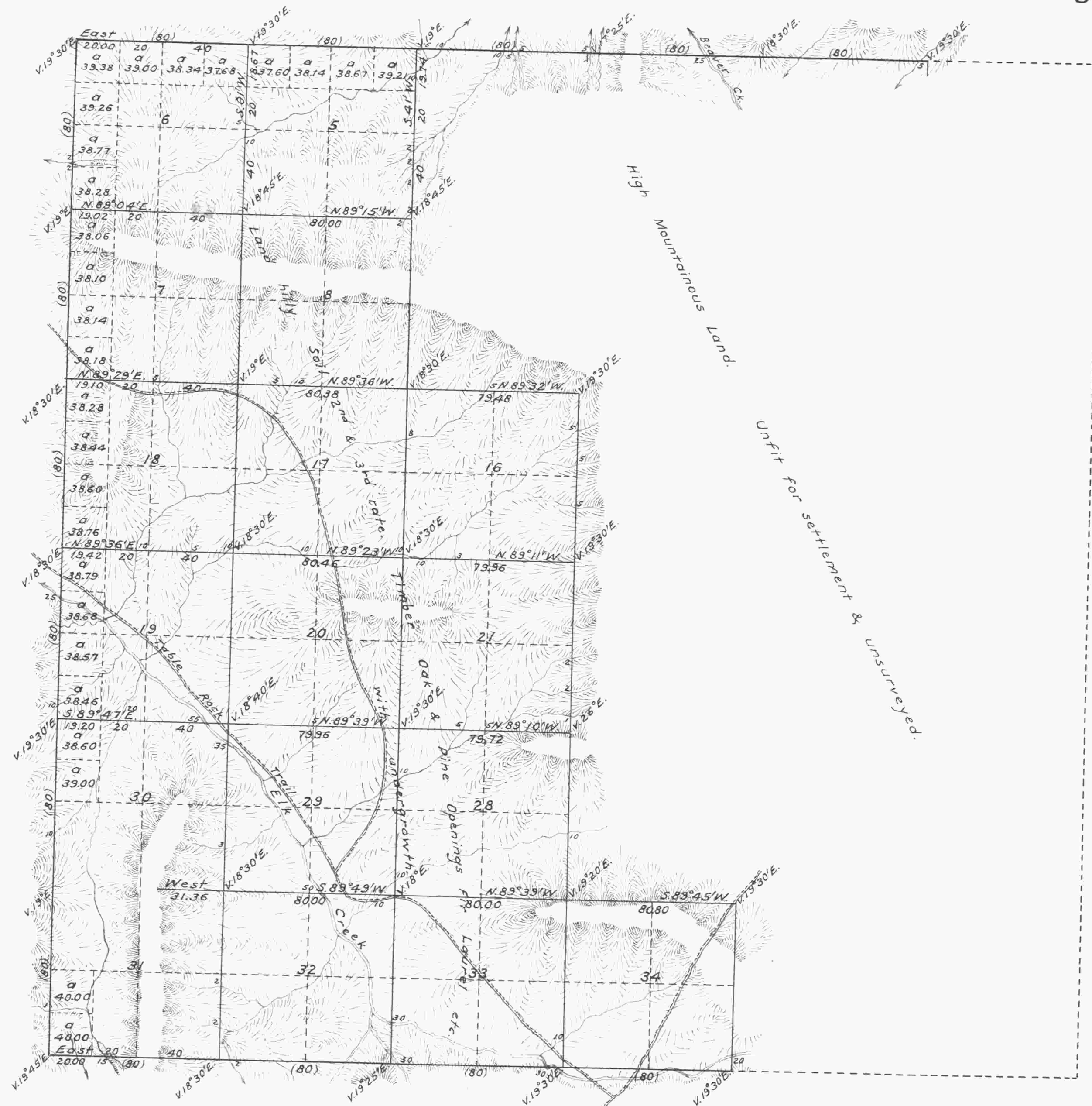


Township No. 31 South, Range No. 1 West, Willamette Meridian, Oregon.



Surveys Designated	By whom surveyed	Contract		Amt. of Surveys			When surveyed.
		No.	Date	Miles	chains	links	
Township Lines	Dennis Hathorn	73	June 8 th 1857.	10	00	00	February 20 th 1858.
Subdivisions	Dennis Hathorn	73	June 8 th 1857.	31	27	27	February 20 th 1858.
Total number of Acres		10522.99					

The above Map of Fractional Township No. 31 South, of Range No. 1 West, of the Willamette Meridian, Territory of Oregon, is strictly conformable to the field notes of the survey thereof on file in this office, which have been examined and approved.

Surveyor General's Office,
Salem, February 20th, 1858.
(signed) John S. Zieber.
Sur. Gen. of Oregon.

Public Survey Office,
Portland, Oregon,
September 9, 1935.

I certify the above to be a correct copy of the original plat on file in this office.

Joseph A. Gausmy
Office Cadastral Engineer.