

Date: 3/26/2019 By: JC
 This survey consists of:
 Map: T30-9W 2018-1
 Narrative: VOL. 59 PAGES
 Corner Rpt: 23618-23627

TOWNSHIP 30 SOUTH, RANGE 9 WEST, OF THE WILLAMETTE MERIDIAN, OREGON

DEPENDENT RESURVEY AND SUBDIVISION OF SECTION 5

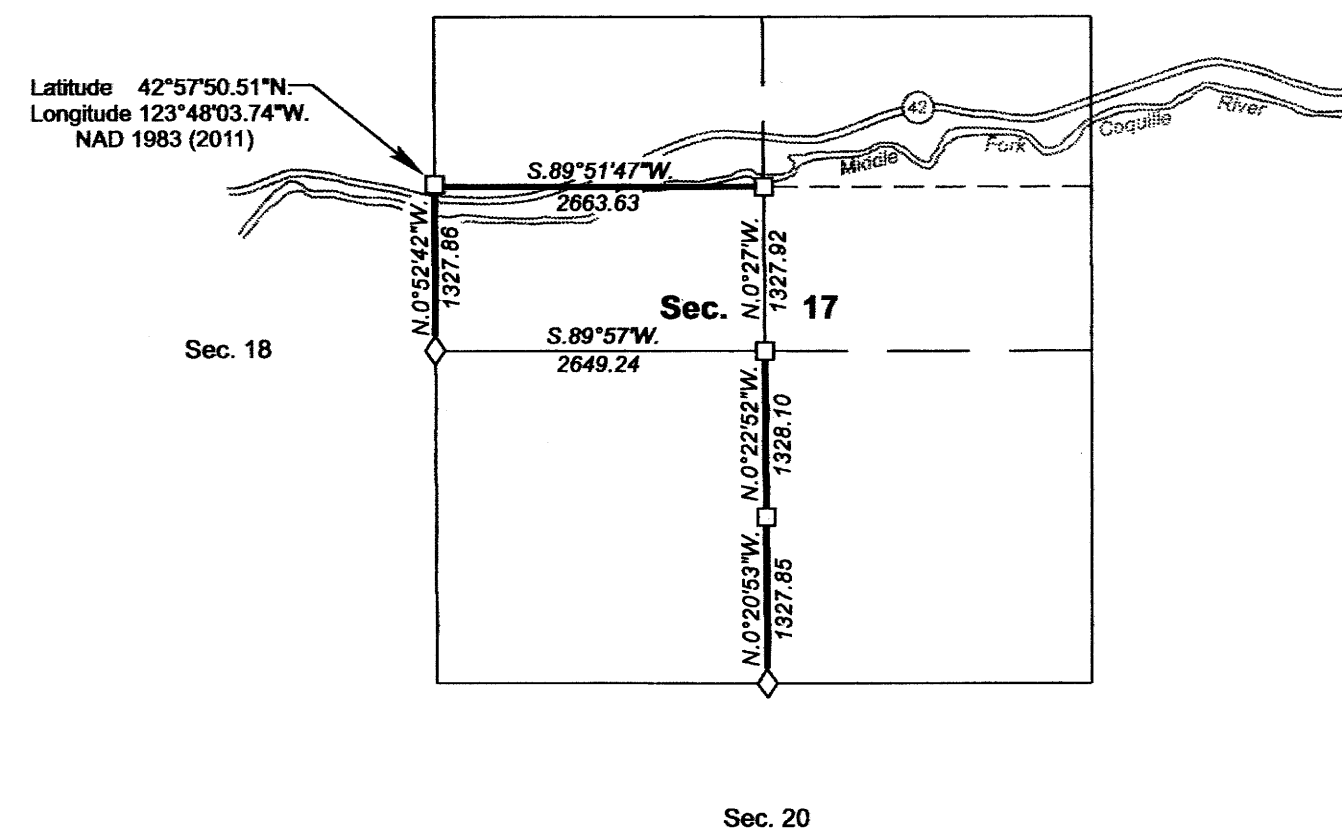
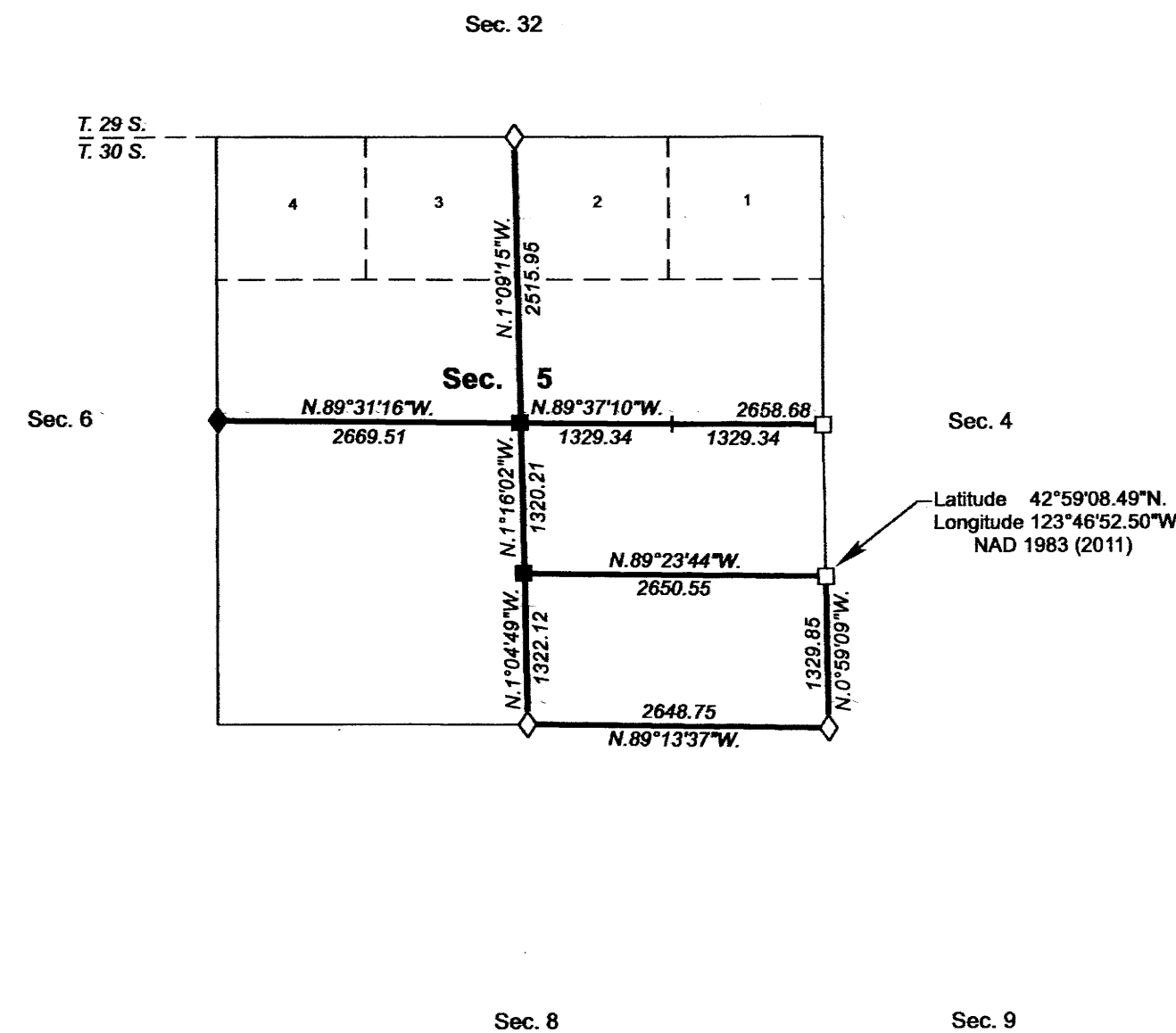
DOUGLAS COUNTY
 SURVEYOR

A history of surveys, corner descriptions, and other relevant information are contained in the field notes.

This plat represents the dependent resurvey of a portion of the subdivisional lines and subdivision of section lines of section 17, designed to restore the corners in their true original locations according to the best available evidence, and the subdivision of section 5, Township 30 South, Range 9 West, Willamette Meridian, Oregon.

Official areas based on the measurements of this survey have been returned for Federal interest land where indicated. Aliquot part legal subdivisions retain their aliquot characteristics and refer to precisely the same land as that which was previously identified by its original survey or description. A lot can only be subdivided by survey or supplemental plat. Except as indicated hereon, the lottings and areas are as shown on the plat approved June 26, 1894.

Survey executed by Randolph E. Younis, Cadastral Surveyor, beginning September 8, 2016, and completed March 16, 2017, pursuant to special instructions approved August 9, 2016, for Group No. 2849, Oregon.



LEGAL SUBDIVISION	OFFICIAL ACRES
SECTION 5	
SW1/4 SE1/4	40.25
SE1/4 SE1/4	40.37
SECTION 17	
SW1/4 NW1/4	40.55
SE1/4 NW1/4	40.65
TOTAL AREA	161.82
FEDERAL INTEREST LAND RESURVEYED	

NOTE:
 The lightweight lines with bearings and distances shown were surveyed by Herman A. Pieske in 1982-83, and were utilized to calculate the areas of Federal interest land in section 17.

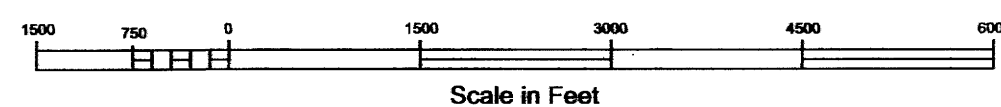
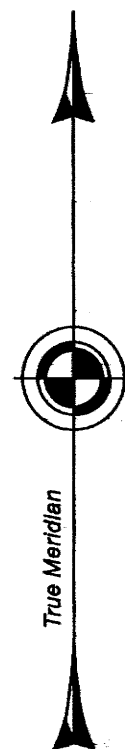
LEGEND	
◇	Original corner previously remonumented
◆	Original corner remonumented this survey
□	Corner previously established or reestablished
■	Corner previously established or reestablished; remonumented this survey
+	Corner point calculated, no monument set

UNITED STATES DEPARTMENT OF THE INTERIOR
 BUREAU OF LAND MANAGEMENT
 Portland, Oregon

This plat is strictly conformable to the approved field notes, and the survey, having been correctly executed in accordance with the requirements of law and the regulations of this Bureau, is hereby accepted.

For the Director
Mary J. M. Harts
 Chief Cadastral Surveyor of Oregon

November 9, 2018
 Date



OFFICIALLY FILED: 2/11/2019