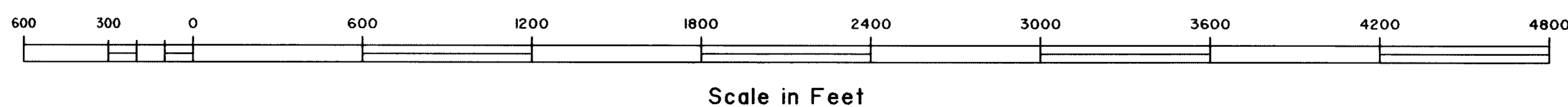
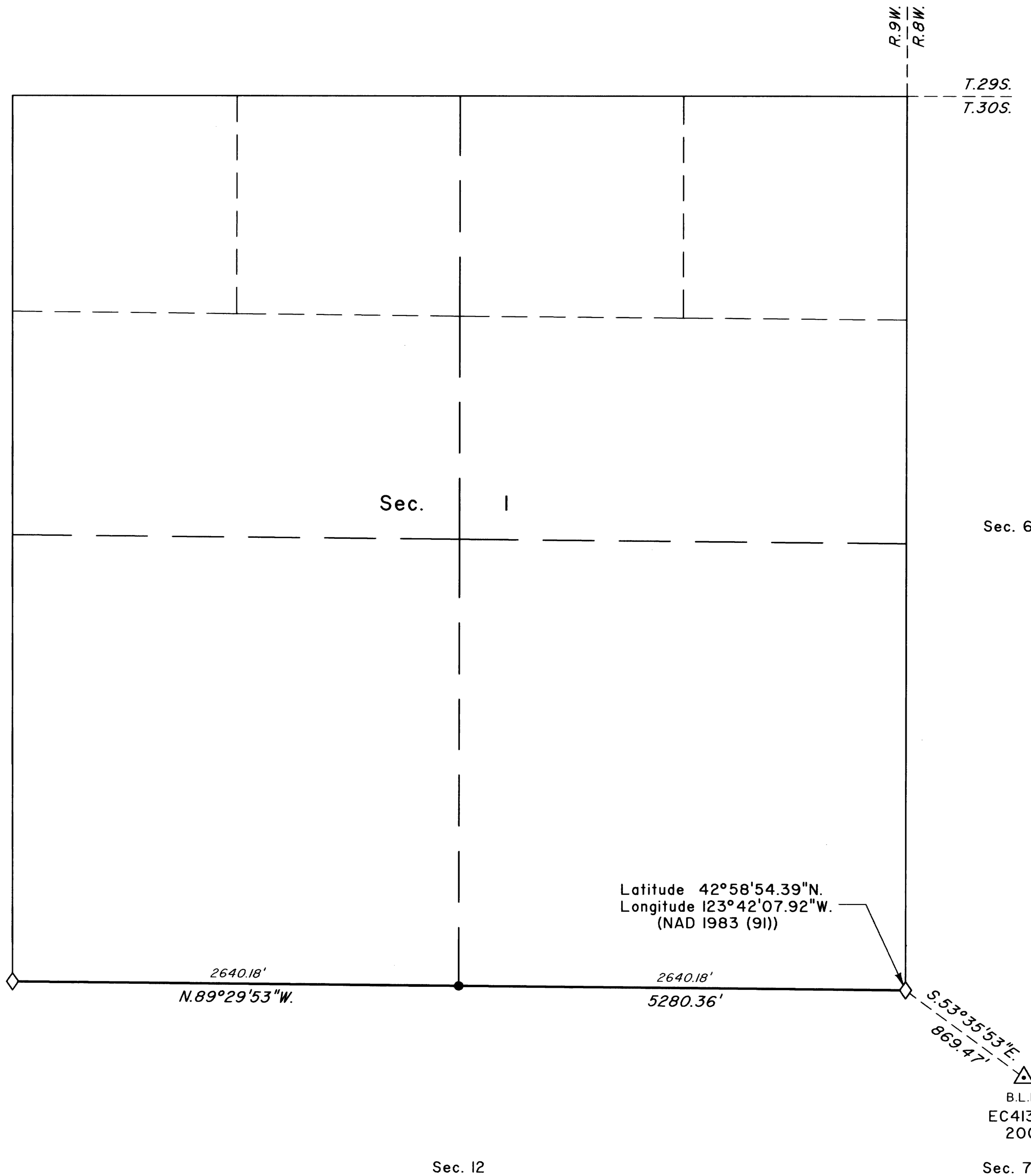
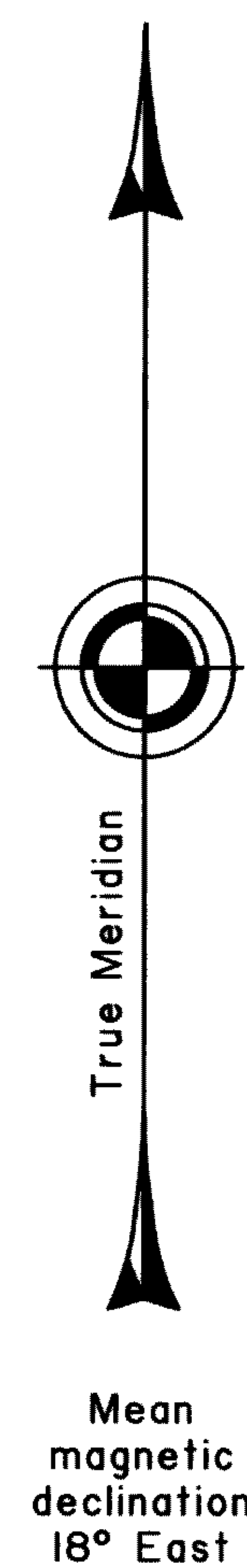


TOWNSHIP 30 SOUTH, RANGE 9 WEST, OF THE WILLAMETTE MERIDIAN, OREGON

DEPENDENT RESURVEY



A history of surveys is contained in the field notes.

This plat represents a dependent resurvey of a portion of the subdivisional lines, T. 30 S., R. 9 W., Willamette Meridian, Oregon, designed to restore the corners in their true original locations according to the best available evidence.

Measured distances and directions have been adjusted by Cadastral Measurement Management (CMM), computer software that incorporates a least squares adjustment routine. The adjusted bearings and distances are reported to the nearest second and 0.01 foot.

The lottings and areas are as shown on the plat approved July 7, 1856.

The survey was executed by A. Bert Skeesick, Cadastral Surveyor, beginning May 10, 2001, and completed May 30, 2001, pursuant to Special Instructions dated March 16, 2001, under Group Number 1973, Oregon.

Timber in this area consists of fir, cedar, chinquapin, maple, madrone, and oak.

The tie to the geodetic control station is reported as mean bearing and sea level distance.

LEGEND

- ◊ Original corner previously remonumented
- Corner established or reestablished this survey

UNITED STATES DEPARTMENT OF THE INTERIOR
BUREAU OF LAND MANAGEMENT

Portland, Oregon May 6, 2004

This plat is strictly conformable to the approved field notes, and the survey, having been correctly executed in accordance with the requirements of law and the regulations of this Bureau, is hereby accepted.

For the Director

Mary J. M. Hartel

Chief Cadastral Surveyor of Oregon