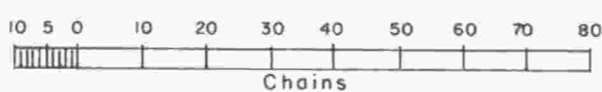
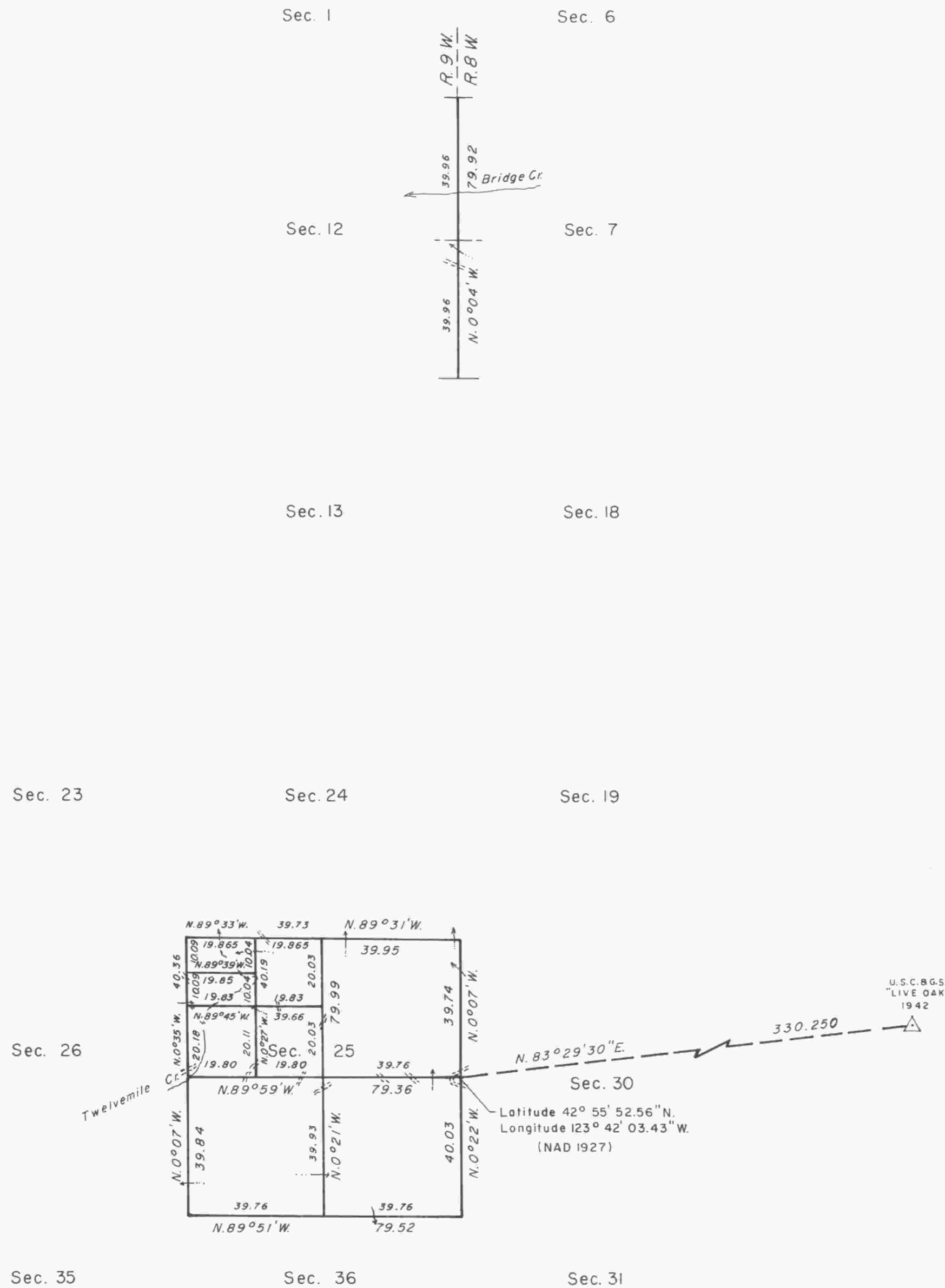


# TOWNSHIP 30 SOUTH, RANGE 9 WEST, OF THE WILLAMETTE MERIDIAN, OREGON

## DEPENDENT RESURVEY AND SUBDIVISION OF SECTION 25



Mean magnetic declination  
20° EAST



A history of surveys is contained in the field notes.

This plat represents a dependent resurvey of a portion of the east boundary and subdivisional lines, T.30S., R.9W., Willamette Meridian, Oregon, designed to restore the corners in their true original locations according to the best available evidence, and the subdivision of section 25.

The lottings and areas are as shown on the plat approved July 7, 1856.

The survey was executed by Dale T. Bedell, Wayne L. Rogers and Boyd W. Peterson, Cadastral Surveyors, beginning August 28, 1986, and completed November 12, 1986, pursuant to Special Instructions dated July 16, 1986, and Amendment to Special Instructions dated September 5, 1986, under Group Number 1339, Oregon.

Timber in this area consists of fir, hemlock, cedar, pine, yew, maple, chinquapin, oak, madrone and alder.

UNITED STATES DEPARTMENT OF THE INTERIOR  
BUREAU OF LAND MANAGEMENT

Portland, Oregon April 7, 1989

This plat is strictly conformable to the approved field notes, and the survey, having been correctly executed in accordance with the requirements of law and the regulations of this Bureau, is hereby accepted.

For the Director

*Wayne M. Gardner*

Chief Cadastral Surveyor of Oregon