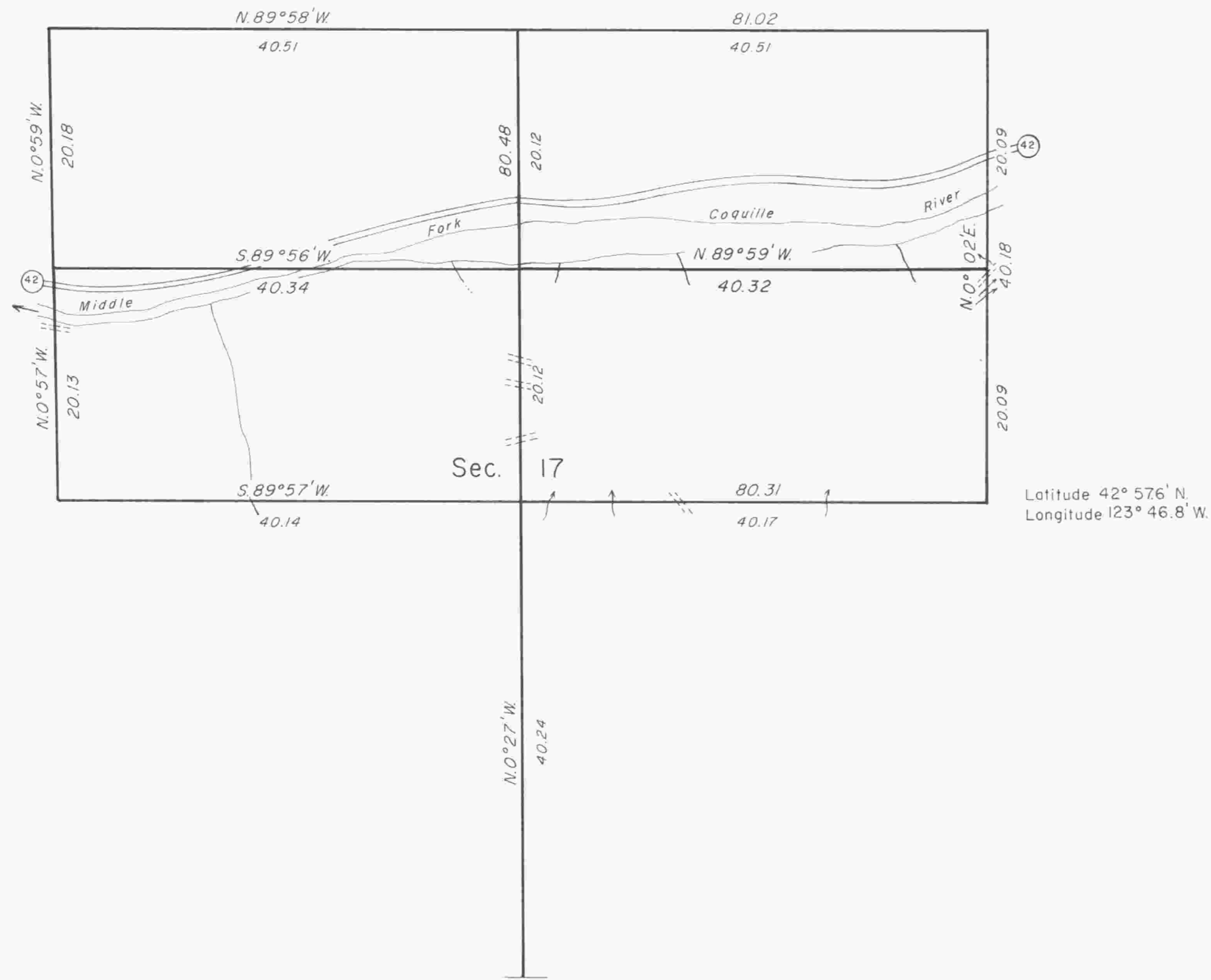


TOWNSHIP 30 SOUTH, RANGE 9 WEST, OF THE WILLAMETTE MERIDIAN, OREGON

DEPENDENT RESURVEY AND SUBDIVISION OF SECTION 17



A history of surveys is contained in the field notes.

This plat represents a dependent resurvey of a portion of the subdivisional lines, T. 30 S., R. 9 W., Willamette Meridian, Oregon, designed to restore the corners in their true original locations according to the best available evidence, and the subdivision of section 17.

The lottings and areas are as shown on the plat approved June 26, 1894.

The survey was executed by Herman A. Pieske, Registered Land Surveyor, No. 1651, beginning July 29, 1982 and completed February 15, 1983, pursuant to Special Instructions dated March 17, 1982, for Group No. 1107, Oregon.

Timber in this area consists of fir, cedar, hemlock, alder, maple, dogwood, chinquapin, and vine maple.

UNITED STATES DEPARTMENT OF THE INTERIOR
BUREAU OF LAND MANAGEMENT
Portland, Oregon April 20, 1984

This plat is strictly conformable to the approved field notes, and the survey, having been correctly executed in accordance with the requirements of law and the regulations of this Bureau, is hereby accepted.

For the Director

William W. Glenn

Chief Cadastral Surveyor of Oregon



Mean magnetic declination
19° EAST

