

# TOWNSHIP 30 SOUTH, RANGE 8 WEST, OF THE WILLAMETTE MERIDIAN, OREGON

## DEPENDENT RESURVEY

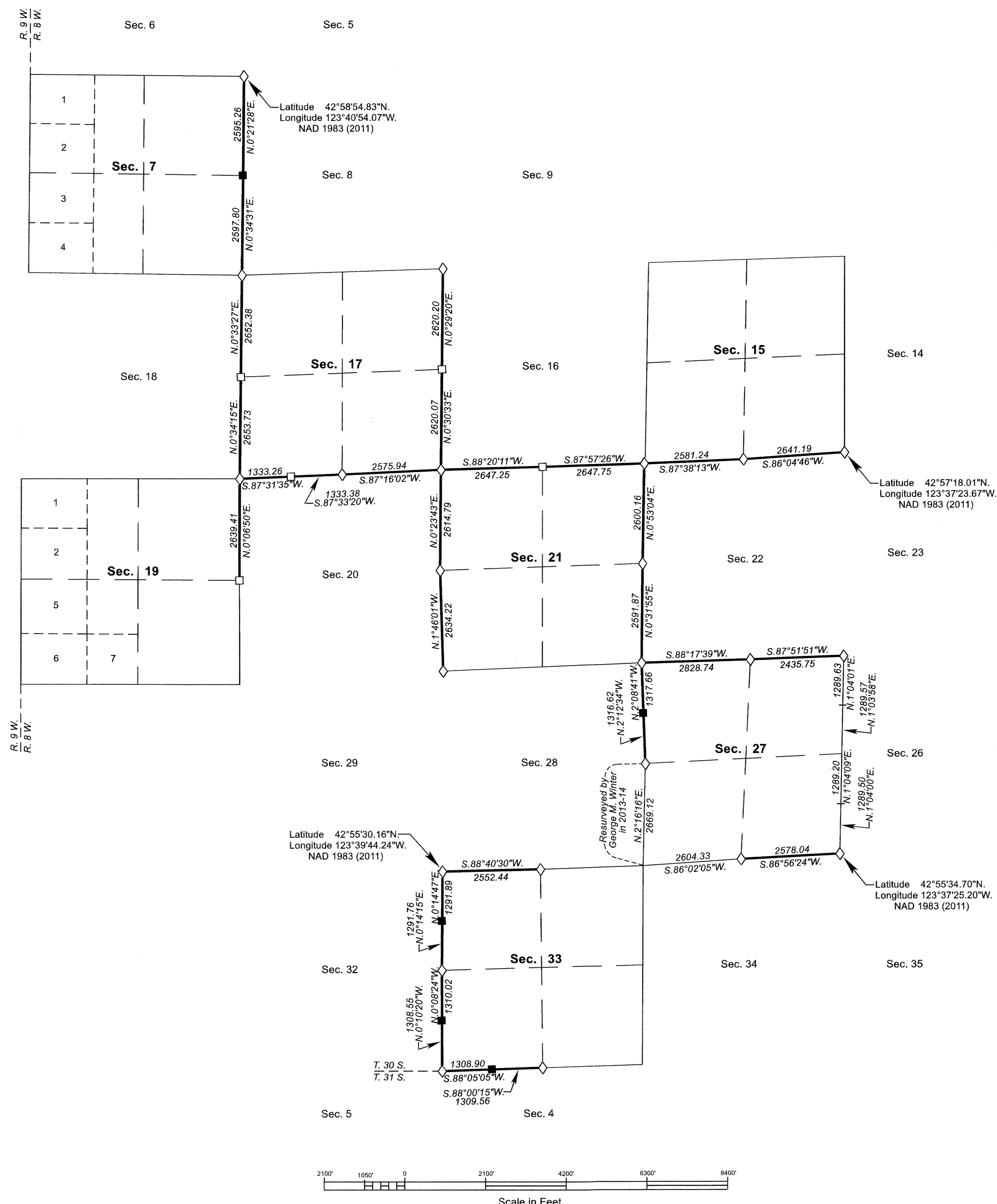
DOUGLAS COUNTY SURVEYOR

A history of surveys, corner descriptions, and other relevant information are contained in the field notes.

This plat represents of the dependent resurvey of portions of the south boundary and subdivisional lines, designed to restore the corners in their true original locations according to the best available evidence, Township 30 South, Range 8 West, Willamette Meridian, Oregon.

Official areas based on the measurements of this survey have been returned for Federal interest land where indicated. Aliquot part legal subdivisions retain their aliquot characteristics and refer to precisely the same land as that which was previously identified by its original survey or description. A lot can only be subdivided by survey or supplemental plat. Except as indicated herein, the lottings and areas are as shown on the plat approved July 28, 1883; and plats accepted May 11, 1984, and November 7, 2014.

Survey executed by Jeffrey O. Covington, Cadastral Surveyor, beginning May 12, 2020, and completed February 25, 2021, pursuant to special instructions approved April 24, 2020, for Group No. 2972, Oregon.



LEGAL SUBDIVISION	OFFICIAL ACRES
SECTION 27	
NE1/4 NE1/4	36.32
NW1/4 NE1/4	36.45
SW1/4 NE1/4	36.97
SE1/4 NE1/4	36.84
NE1/4 NW1/4	41.48
NW1/4 NW1/4	41.82
SW1/4 NW1/4	40.16
SE1/4 NW1/4	39.84
NE1/4 SW1/4	39.11
NW1/4 SW1/4	39.59
SW1/4 SW1/4	39.47
SE1/4 SW1/4	39.00
NE1/4 SE1/4	37.36
NW1/4 SE1/4	37.52
SW1/4 SE1/4	38.04
SE1/4 SE1/4	37.88
TOTAL AREA	617.85
FEDERAL INTEREST LAND RESURVEYED	

NOTE: Unless otherwise noted, the lightweight exterior lines with bearings and distances shown in section 27 were surveyed by Kenneth W. Saveland in 2008, and were utilized to calculate the areas of Federal interest land.

**LEGEND**

- ◇ Original corner previously remonumented
- Corner previously established or reestablished
- Corner previously established or reestablished; remonumented this survey

UNITED STATES DEPARTMENT OF THE INTERIOR  
BUREAU OF LAND MANAGEMENT

Portland, Oregon

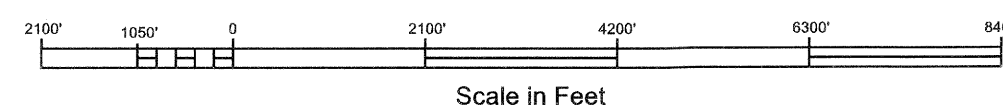
This plat is strictly conformable to the approved field notes, and the survey, having been correctly executed in accordance with the requirements of law and the regulations of this Bureau, is hereby accepted.

For the Director  
*Mary J. M. Hantel*

Chief Cadastral Surveyor of Oregon

October 19, 2021

Date



OFFICIALLY FILED: 1/14/2022