

TOWNSHIP 30 SOUTH, RANGE 8 WEST, OF THE WILLAMETTE MERIDIAN, OREGON

DEPENDENT RESURVEY

DOUGLAS COUNTY
 SURVEYOR

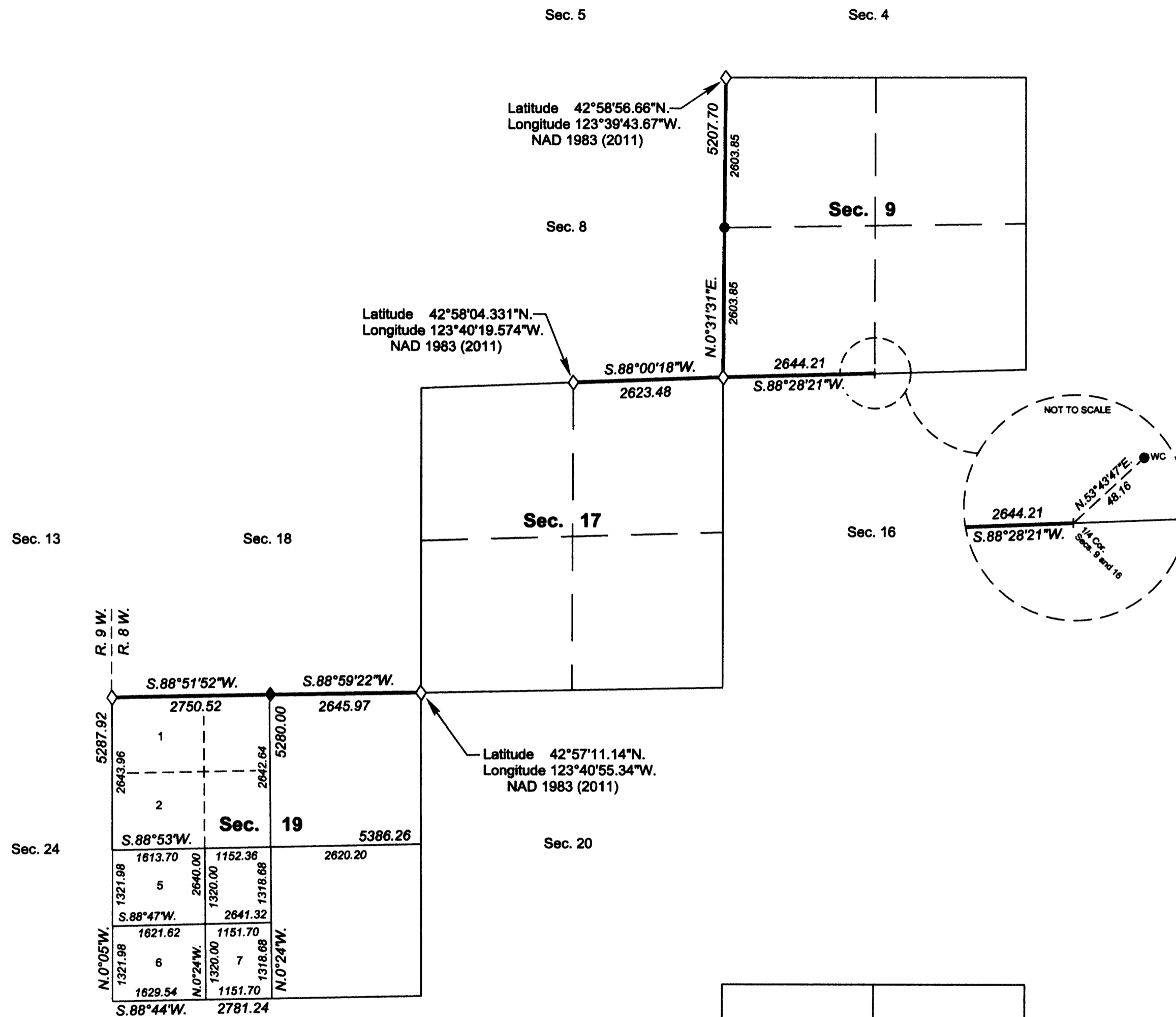
A history of surveys, corner descriptions, and other relevant information are contained in the field notes.

This plat represents the dependent resurvey of a portion of the subdivisional lines, designed to restore the corners in their true original locations according to the best available evidence, Township 30 South, Range 8 West, Willamette Meridian, Oregon.

Official areas based on the measurements of this survey have been returned for Federal interest lands where indicated. Aliquot part legal subdivisions retain their aliquot characteristics and refer to precisely the same land as that which was previously identified by its original survey or description. A lot can only be subdivided by survey or supplemental plat. Except as indicated hereon, the lottings and areas are as shown on the plat approved July 28, 1883, and the plat accepted May 11, 1984.

Survey executed by George M. Winter, Cadastral Surveyor, beginning April 9, 2013, and completed February 18, 2014, pursuant to special instructions approved March 28, 2013, and supplemental special instructions approved February 10, 2014, for Group No. 2698, Oregon.

OFFICIALLY FILED: 3/2/2015



NOTE:
 The lightweight lines with bearings and distances shown were surveyed by James E. Jelley and Wayne L. Rogers in 1980, and utilized to calculate the areas of the Federal interest lands in section 19.

LEGEND

- ◇ Original corner previously remonumented
- ◆ Original corner remonumented this survey
- Corner established or reestablished this survey
- + Corner point calculated, no monument set

LEGAL SUBDIVISION	OFFICIAL ACRES
SECTION 19	
NE1/4 NW1/4	34.98
LOT 1	48.58
LOT 2	48.82
SE1/4 NW1/4	34.96
LOT 5	49.05
LOT 6	49.29
LOT 7	34.88
TOTAL AREA	300.56
FEDERAL INTEREST LAND RESURVEYED	

UNITED STATES DEPARTMENT OF THE INTERIOR
 BUREAU OF LAND MANAGEMENT
 Portland, Oregon

This plat is strictly conformable to the approved field notes, and the survey, having been correctly executed in accordance with the requirements of law and the regulations of this Bureau, is hereby accepted.

For the Director
Mary J. M. Hartzel
 Chief Cadastral Surveyor of Oregon

November 7, 2014
 Date

