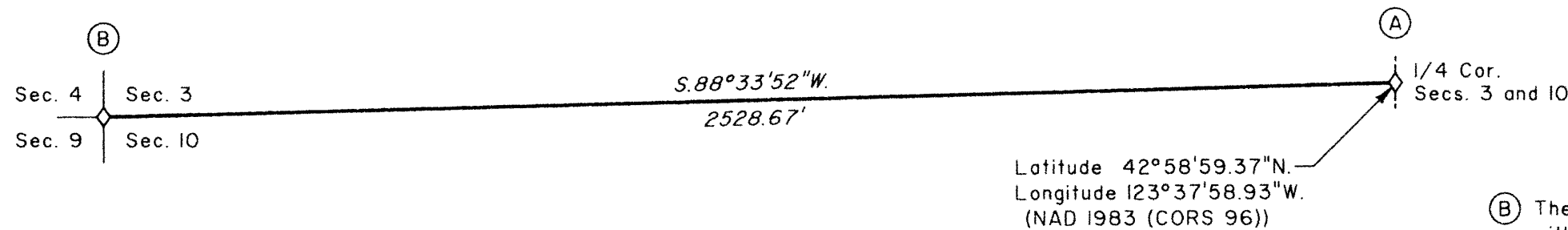


TOWNSHIP 30 SOUTH, RANGE 8 WEST, OF THE WILLAMETTE MERIDIAN, OREGON

RETRACEMENT



Latitude 42° 58' 59.37\"N.
Longitude 123° 37' 58.93\"W.
(NAD 1983 (CORS 96))



(A) The 1/4 sec. cor. of secs. 3 and 10, perpetuated by James W. Byron, Deputy County Surveyor, in 1965, filed in the Douglas County Surveyor's Office, C.S. File No. 53/67, monumented with an iron post, 1 1/4 ins. diam., firmly set, projecting 16 ins. above ground, with a brass cap mkd.

COUNTY SURVEYORS OFFICE
T 30 S R 8 W
S 3
1/4
S 10
1965

from which the remains of the original bearing trees

A yew, 13 ins. diam., bears N. 10° E., 19.1 ft. dist., with no marks visible.

A sawed, hollow, and burnt cedar stump, 15 ins. diam., bears S. 12° W., 13.2 ft. dist., with no marks visible.

and the remains of bearing trees mkd. by Byron

A decayed hemlock snag, 13 ins. diam., bears N. 32 1/2° E., 40.8 ft. dist., with fragmentary scribe marks visible on a partially healed double blaze.

A fir, 19 ins. diam., bears S. 38 3/4° W., 23.4 ft. dist., with a healed blaze.

(B) The cor. of secs. 3, 4, 9 and 10, monumented with the original corner tree, a fir snag, 62 ins. diam., with scribe mark W and other fragmentary scribe marks visible on the on the bark of the NE. face, with axe marks and notches around base of trunk, from which bearing trees mkd. by Rogers, Bishop, and White

A hemlock, 11 ins. diam., bears N. 80° E., 48.2 ft. dist., with a healed double blaze.

A fir, 11 ins. diam., bears S. 42 1/2° E., 23.1 ft. dist., with a healed double blaze.

A fir, 25 ins. diam., bears S. 21° W., 50.2 ft. dist., with a healed blaze.

A fir, 15 ins. diam., bears N. 51 1/4° W., 29.0 ft. dist., with a healed blaze.

and new reference monuments

Drive a rebar, 30 ins. long, 5/8 in. diam., 28 ins. in the ground, bears S. 65° 51' 58\" E., 28.95 ft. dist., with aluminum cap mkd. RM T30S R8W S10 29.0 FT TO COR 2010 and an arrow pointing to the corner.

Drive a rebar, 30 ins. long, 5/8 in. diam., 28 ins. in the ground for a reference monument, bears S. 22° 46' 58\" W., 25.76 ft. dist., with aluminum cap mkd. RM T30S R8W S9 25.8 FT TO COR 2010 and an arrow pointing to the corner.

From this corner, a witness corner established by the Douglas County Surveyor's Office in 1965, reported by Rogers, Bishop, and White, bears South, 9.90 ft. dist., monumented with an iron post, 1 1/4 ins. diam., firmly set, projecting 6 ins. above ground, with a brass cap mkd. COUNTY SURVEYORS OFFICE W.C. 10 FT. N. T30S R8W S4 S3 S9 S10 1965, from which bearing trees mkd. by the Douglas County Surveyor's Office, reported by Rogers, Bishop, and White

A fir, 16 ins. diam., bears S. 87° E., 54.2 ft. dist., with a healed blaze. (Record, 55.4 ft. dist.)

A hemlock, 20 ins. diam., bears S. 35° E., 38.3 ft. dist., with a healed blaze.

A fir, 25 ins. diam., bears S. 62 3/4° W., 27.7 ft. dist., with a healed blaze. (Record, S. 55° W.)

and the remains of a bearing tree mkd. by the Douglas County Surveyor's Office, not previously reported by Rogers, Bishop, and White

A roothole bears N. 45 1/4° W., 43.8 ft. dist., alongside of which is an uprooted chinquapin root crown, size indeterminate, with no marks visible.

This plat constitutes the entire record of the retracement of a portion of the subdivisional lines, Township 30 South, Range 8 West, Willamette Meridian, Oregon.

The history of the official surveys pertaining to this retracement is as follows:

In 1882, William H. Byars, U. S. Deputy Surveyor, surveyed the subdivisional lines and resurveyed the north boundary of the township, as shown on plat of official survey approved July 28, 1883, accepted October 20, 1883.

In 1985, Wayne L. Rogers, Lance J. Bishop, and James L. White, Cadastral Surveyors, resurveyed a portion of the subdivisional lines, as shown on plat of official survey accepted September 4, 1987.

The survey was executed in accordance with the specification set forth in the Manual of Surveying Instructions (2009), and the special instructions dated March 16, 2007, approved March 21, 2007, for Group No. 2300, Administrative File No. 0903, Oregon.

The direction of the lines are based on the true meridian as determined by Global Positioning System (GPS) techniques and carried forward by sustained angulation using conventional survey techniques. All measurements along the lines were derived through the use of electronic measuring equipment. Measured distances and directions have been adjusted by computer software that incorporates a least squares adjustment routine. The adjusted mean bearings and mean horizontal ground elevation distances are reported to the nearest second and 0.01 foot.

Each new bearing tree has a 2 1/2 inch x 1/4 inch magnetic nail (Mag Nail) driven at the base on right side center, unless otherwise noted in the corner description.

Only those lines bounding public land were blazed.

The geographic position shown hereon was determined by a tie from a temporary GPS control point, utilizing dual frequency, carrier phase GPS receivers, and processed using the National Geodetic Survey's Online Positioning User Service (OPUS).

Survey executed by Kenneth W. Saveland, Cadastral Surveyor, beginning March 16, 2010 and completed April 2, 2010. He was assisted by Robert NMI Durning and Joel R. Herzberg, Surveying Technicians.

LEGEND

◊ Original corner previously remonumented

UNITED STATES DEPARTMENT OF THE INTERIOR
BUREAU OF LAND MANAGEMENT

Portland, Oregon

The survey represented by this plat, having been correctly executed in accordance with the requirements of law and the regulations of this Bureau, is hereby accepted.

For the Director

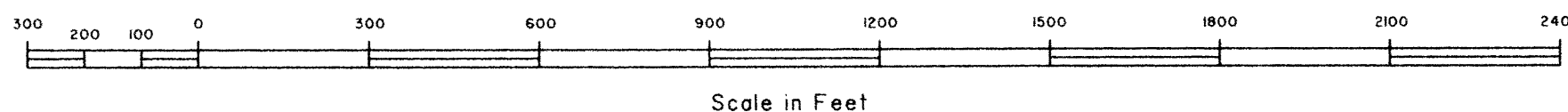
Mary J. M. Hunt

Chief Cadastral Surveyor of Oregon

I, Kenneth W. Saveland, Cadastral Surveyor, HEREBY CERTIFY upon honor, that in pursuance of special instructions bearing the approval date of the 21st day of March, 2007, and the assignment instructions bearing the date of the 22nd day of February, 2010, I have retraced a portion of the subdivisional lines, Township 30 South, Range 8 West, Willamette Meridian, Oregon, which is represented upon this plat as having been executed by me and under my direction; and that said survey has been made in strict conformity with said special instructions, the Manual of Surveying Instructions, and in the specific manner described on this plat.

Kenneth W. Saveland
Cadastral Surveyor

AUGUST 31, 2011
Date



OFFICIALLY FILED: 10/13/2011

September 6, 2011
Date