

TOWNSHIP 30 SOUTH, RANGE 8 WEST, OF THE WILLAMETTE MERIDIAN, OREGON

DEPENDENT RESURVEY AND SUBDIVISION OF SECTION 13

FILED
 Date: 9/19/2011 By: JC
 This survey consists of:
 Map: VOL 57
 Narrative: PAGES
 Corner Rpt: 22534-46
 DOUGLAS COUNTY
 SURVEYOR

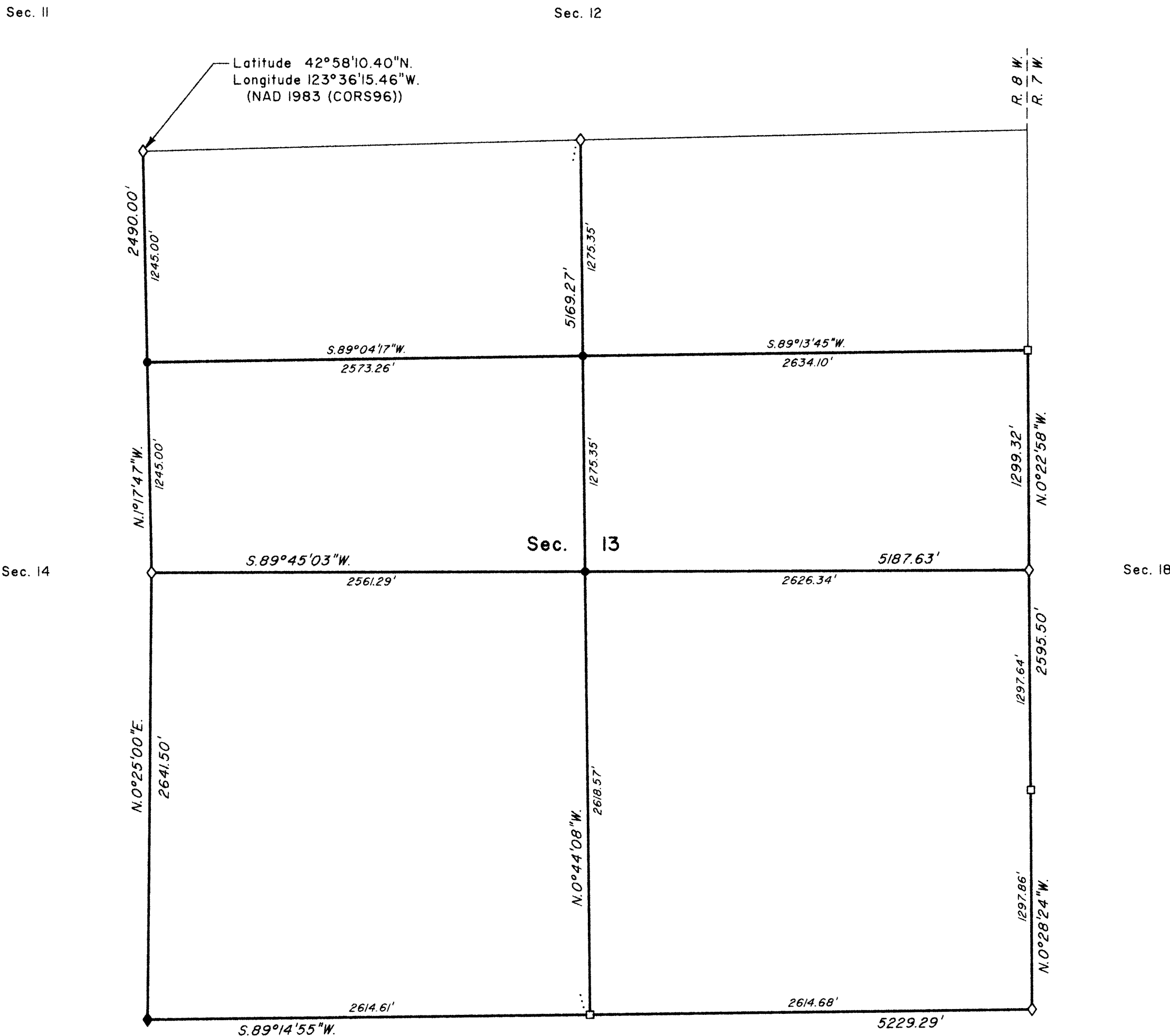
A history of surveys is contained in the field notes.

This plat represents a dependent resurvey of a portion of the east boundary and subdivisional lines, T. 30 S., R. 8 W., Willamette Meridian, Oregon, designed to restore the corners in their true original locations according to the best available evidence, and the subdivision of section 13.

The survey was performed utilizing both conventional (directly measured angles and distances) and NAVSTAR Global Positioning System (GPS) satellite techniques. The GPS measurements utilized dual frequency, carrier phase GPS receivers. The baselines were computed in and adjusted by least squares analysis using Trimble Geomatics Office (TGO).

Official area based on the measurements of this survey have been returned for Federal interest land where indicated. Aliquot part legal subdivisions retain their aliquot characteristics and refer to precisely the same land as that which was previously identified by its original survey or description. A lot can only be subdivided by survey or supplemental plat. Except as indicated hereon, the lottings and areas are as shown on the plat approved July 28, 1883, and accepted October 20, 1883.

The survey was executed by A. Bert Skeesick, Cadastral Surveyor, beginning July 10, 2006, and completed August 10, 2006, pursuant to Special Instructions dated May 25, 2006, approved May 30, 2006, under Group Number 2139, Oregon.



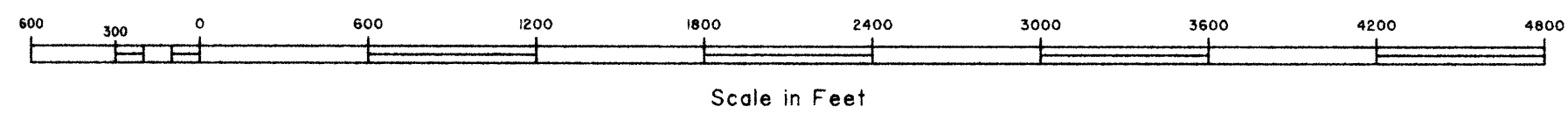
LEGAL SUBDIVISION	OFFICIAL ACRES
SECTION 13	
SW 1/4 NE 1/4	38.69
SE 1/4 NE 1/4	39.05
SW 1/4 NW 1/4	36.91
SE 1/4 NW 1/4	37.36
NE 1/4 SW 1/4	38.76
NW 1/4 SW 1/4	38.93
SW 1/4 SW 1/4	39.33
SE 1/4 SW 1/4	39.16
NE 1/4 SE 1/4	39.15
NW 1/4 SE 1/4	39.33
SW 1/4 SE 1/4	39.24
SE 1/4 SE 1/4	39.07

LEGEND	
◊	Original corner previously remonumented
◆	Original corner remonumented this survey
□	Corner previously established or reestablished
●	Corner established or reestablished this survey

UNITED STATES DEPARTMENT OF THE INTERIOR
 BUREAU OF LAND MANAGEMENT
 Portland, Oregon

This plat is strictly conformable to the approved field notes, and the survey, having been correctly executed in accordance with the requirements of law and the regulations of this Bureau, is hereby accepted.

For the Director
John P. Jansworth, Acting
 Chief Cadastral Surveyor of Oregon



5/13/2011
 Date

OFFICIALLY FILED: 7/28/2011