

TOWNSHIP 30 SOUTH, RANGE 8 WEST, OF THE WILLAMETTE MERIDIAN, OREGON

DEPENDENT RESURVEY

FILED
 Date: 7/20/2010 By: JC
 This survey consists of:
 Map: BLM LINE NOTES
 Narrative: VOL. 56
 Corner Rpt: Pgs 22141-22157

DOUGLAS COUNTY
 SURVEYOR

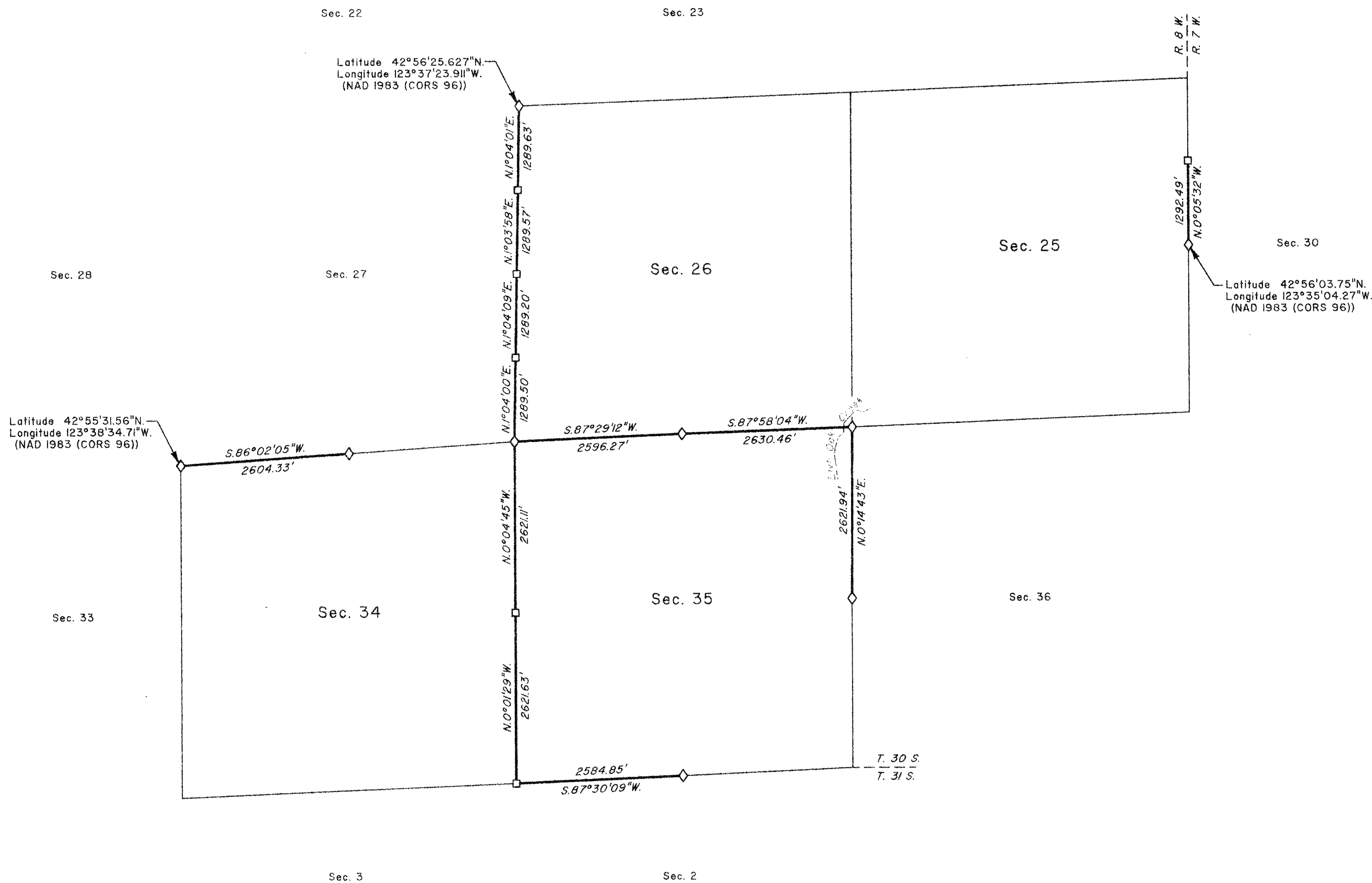
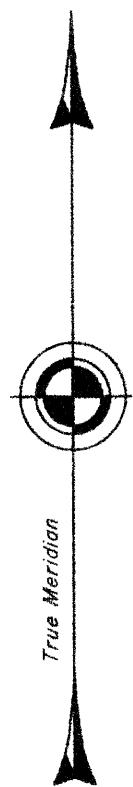
A history of surveys is contained in the field notes.

This plat represents the dependent resurvey of a portion of the south and east boundaries and subdivisional lines, T. 30 S., R. 8 W., Willamette Meridian, Oregon, designed to restore the corners in their true original locations according to the best available evidence.

The survey was performed utilizing both conventional (directly measured angles and distances) and NAVSTAR Global Positioning System (GPS) satellite techniques. The GPS measurements utilized dual frequency, carrier phase GPS receivers. The baselines were computed in and adjusted using a least squares adjustment routine. Conventionally measured distances and directions have been adjusted using a least squares adjustment routine. The adjusted bearings and distances are reported to the nearest second and 0.01 foot. Only those lines bounding or crossing public lands were blazed.

Except as shown hereon, the lottings and areas are as shown on the plat approved July 28, 1893.

This survey was executed by Kenneth W. Saveland, Cadastral Surveyor, beginning June 11, 2008, and completed July 22, 2008, pursuant to Special Instructions dated February 14, 2008, under Group Number 2192, Oregon.



LEGEND	
◇	Original corner previously remonumented
□	Corner previously established or reestablished

UNITED STATES DEPARTMENT OF THE INTERIOR
 BUREAU OF LAND MANAGEMENT

Portland, Oregon

This plat is strictly conformable to the approved field notes, and the survey, having been correctly executed in accordance with the requirements of law and the regulations of this Bureau, is hereby accepted.

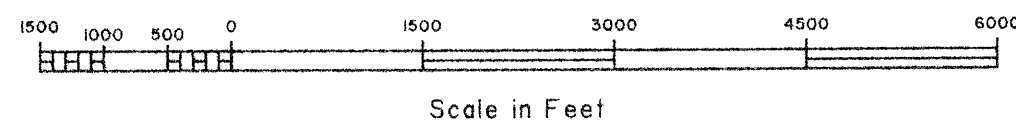
For the Director

Mary J. M. Hunt

Chief Cadastral Surveyor of Oregon

May 4, 2010

Date



Scale in Feet