

DOUGLAS COUNTY
SURVEYOR

TOWNSHIP 30 SOUTH, RANGE 8 WEST, OF THE WILLAMETTE MERIDIAN, OREGON

RETRACEMENT AND REHABILITATION

This plat represents the entire record of the retracement of a portion of the subdivisional lines, and the rehabilitation of the 1/4 section corner of sections 15 and 16, T. 30 S., R. 8 W., Willamette Meridian, Oregon.

The history of surveys pertaining to this retracement and rehabilitation is as follows:

In 1882, William H. Byars, U.S. Deputy Surveyor, resurveyed the north boundary and surveyed the east, south, and west boundaries and the subdivisional lines.

In 1975, G. Steven Popken and James J. Carlson, Cadastral Surveyors, resurveyed a portion of the subdivisional lines.

This retracement and rehabilitation was executed by Kenneth W. Saveland, Cadastral Surveyor, beginning March 17, 2008, and completed March 31, 2008, in accordance with the specification set forth in the Manual of Surveying Instructions, 1973; pursuant to Special Instructions dated March 16, 2007, approved March 21, 2007, which provided for the survey included under Group Number 2300, Oregon, and Assignment Instructions dated March 12, 2008. He was assisted by Robert NMI Durning, and Karl NMI Krom, Surveying Technicians, and Nicholas J. Browning, Laborer.

Preliminary to the retracement, the lines of the prior surveys were retraced and a search was made for all corners and other calls of record. The retracement data were thoroughly verified and only the true line field notes are given hereon. Only those lines bounding or crossing public land were blazed.

The direction of the line is based on the true meridian as determined by Global Positioning System (GPS) measurements.

An analysis of the unadjusted field data assured a closure not exceeding 1:4000 in error. Conventionally measured distances and directions have been adjusted by computer software that incorporates a least squares routine. The adjusted bearings and distances are reported to the nearest second and 0.01 foot.

Each new bearing tree has a 2 1/2 inch x 1/4 inch magnetic nail (Mag Nail) driven at the base on right side center, unless otherwise noted in the corner description.

The geodetic position shown hereon was determined by a tie utilizing dual frequency carrier phase GPS receivers relative to the National Spatial Reference System.

LEGEND	
◇	Original corner previously remonumented

UNITED STATES DEPARTMENT OF THE INTERIOR
BUREAU OF LAND MANAGEMENT

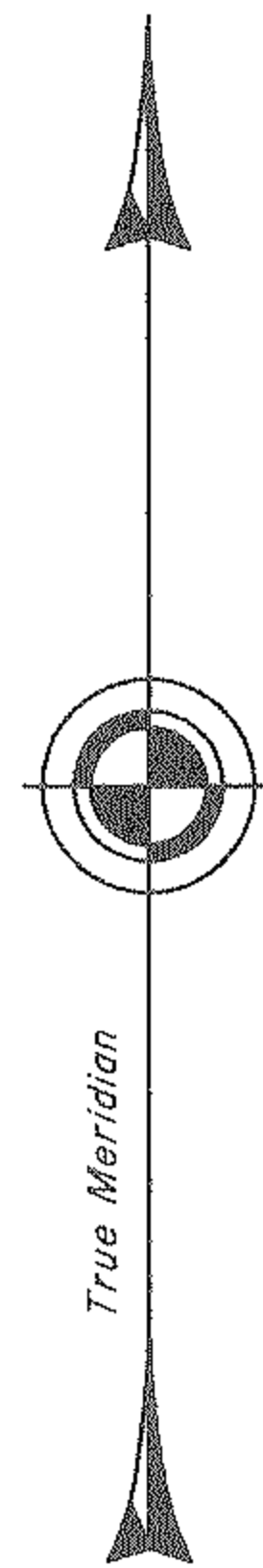
Portland, Oregon

The retracement and rehabilitation represented by this plat, having been correctly executed in accordance with the requirements of law and the regulations of this Bureau, is hereby accepted.

For the Director

John P. Farnsworth, Acting
Chief Cadastral Surveyor of Oregon

September 30, 2009
Date



(A) The cor. of secs. 15, 16, 21, and 22, monumented with an iron post, 1 1/4 ins. diam., firmly set, projecting 9 ins. above ground, with brass cap mkd. as reported in 1975, from which the remains of the original bearing trees

A pine, 46 ins. diam., bears N. 50° E., 8.0 ft. dist., with a healed blaze.

A pine snag, 11 ins. diam., bears S. 72° E., 7.9 ft. dist., with fragmentary scribe marks visible on a partially healed blaze.

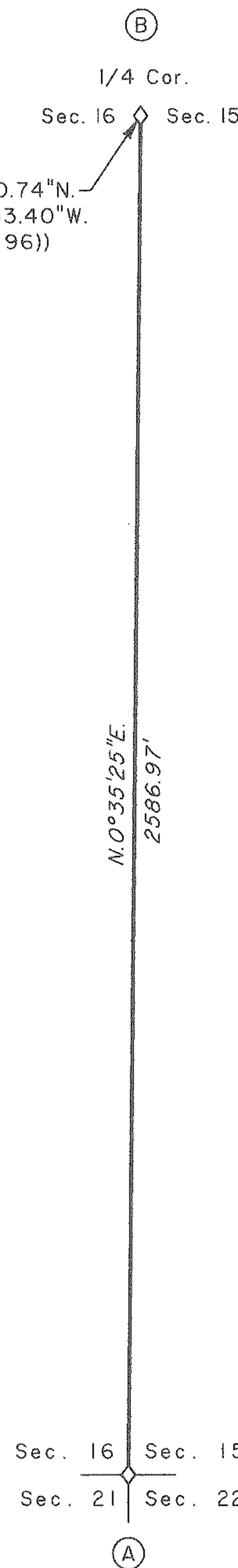
A madrone, 15 ins. diam., bears S. 64° W., 20.5 ft. dist., with no marks visible on a hollow decayed blaze.

A pine, 26 ins. diam., bears N. 24° W., 27.7 ft. dist., with a healed blaze.

and a bearing tree mkd. by the Douglas County Surveyors Office in 1965, filed in the Douglas County Surveyors Record of Government Corners Renewed, T. 30 S., R. 8 W., Index No. 56, reported by Popken and Carlson

A fir, 18 ins. diam., bears S. 44° E., 20.8 ft. dist., with a healed blaze.

Latitude 42°57'40.74"N.
Longitude 123°38'33.40"W.
(NAD 1983 (CORS 96))



(B) The 1/4 sec. cor. of secs. 15 and 16, monumented with an iron post, 1 1/4 ins. diam., firmly set, projecting 15 ins. above ground, in a mound of stone, 3 ft. base, 1 ft. high, with brass cap mkd.

COUNTY SURVEYORS OFFICE
S | S
1/4 16 | 15
T30S R8W
1959

from which the remaining original bearing tree

A madrone, 29 ins. diam., bears S. 44° W., 40.3 ft. dist., with no marks visible on a hollow decayed blaze.

and the remains of bearing trees mkd. by James W. Byron, Deputy County Surveyor, in 1958, filed in the Douglas County Surveyors Record of Government Corners Renewed, T. 30 S., R. 8 W., Index No. 15

An uprooted sawed fir stump, 18 ins. diam., bears N. 83° E., 23.8 ft. dist., with no marks visible.

A roothole bears S. 43 3/4° W., 31.3 ft. dist., with fallen fir snag, 18 ins. diam., lying alongside, with a healed double blaze.

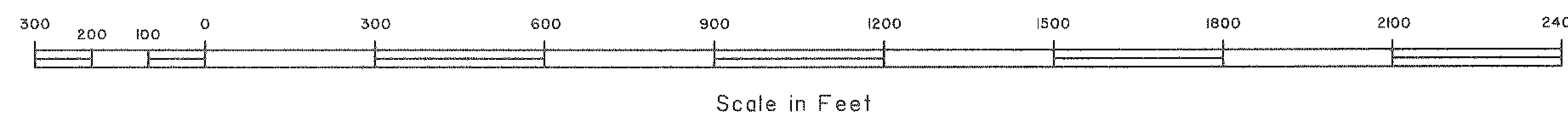
and a new bearing tree

A fir, 14 ins. diam., bears S. 75 3/4° E., 19.2 ft. dist., mkd. 1/4 S 15 BT.

I, Kenneth W. Saveland, Cadastral Surveyor, HEREBY CERTIFY upon honor, that in pursuance of Special Instructions bearing date of the 16th day of March, 2007, I have retraced a portion of the subdivisional lines, and rehabilitated the 1/4 section corner of sections 15 and 16, Township 30 South, Range 8 West, Willamette Meridian, Oregon, which is represented upon this plat as having been executed by me and under my direction. Said retracement has been made in strict conformity with said Special Instructions, the Manual of Instructions for the Survey of the Public Lands of the United States, and in specific manner described upon this plat.

Kenneth W. Saveland
Cadastral Surveyor

SEPTEMBER 29, 2009
Date



OFFICIALLY FILED: 10/16/2009