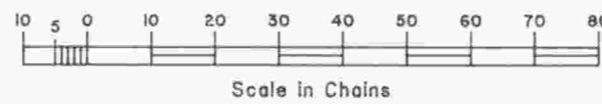
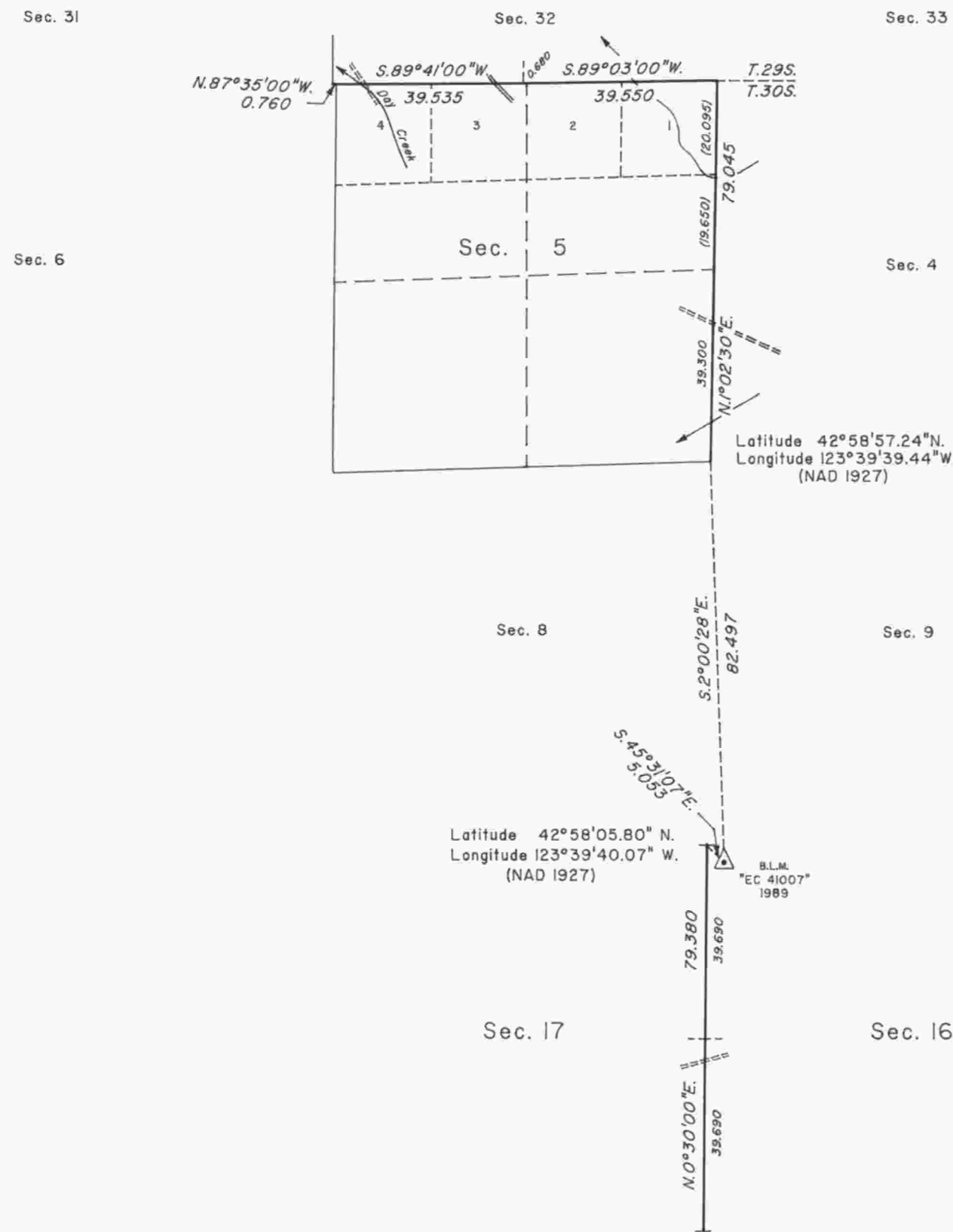


TOWNSHIP 30 SOUTH, RANGE 8 WEST, OF THE WILLAMETTE MERIDIAN, OREGON
DEPENDENT RESURVEY



A history of surveys is contained in the field notes.

This plat represents a dependent resurvey of portions of the north boundary and subdivisional lines, T. 30 S., R. 8 W., Willamette Meridian, Oregon, designed to restore the corners in their true original locations according to the best available evidence.

The lottings and areas are as shown on the plat approved July 28, 1883.

The survey was executed by Dale T. Bedell and Bryan S. Seibold, Cadastral Surveyors, beginning July 18, 1989, and completed April 15, 1993, pursuant to Special Instructions dated June 1, 1989, and Supplemental Special Instructions dated April 11, 1990, under Group Number 1494, Oregon.

Timber in this area consists of fir, hemlock, cedar, pine, maple, chinquapin, oak, myrtle, alder, yew and madrone.

UNITED STATES DEPARTMENT OF THE INTERIOR
BUREAU OF LAND MANAGEMENT

Portland, Oregon August 3, 1993

This plat is strictly conformable to the approved field notes, and the survey, having been correctly executed in accordance with the requirements of law and the regulations of this Bureau, is hereby accepted.

For the Director

Wayne M. Gardner
Chief Cadastral Surveyor of Oregon