

TOWNSHIP 30 SOUTH, RANGE 8 WEST, OF THE WILLAMETTE MERIDIAN, OREGON.
DEPENDENT RESURVEY

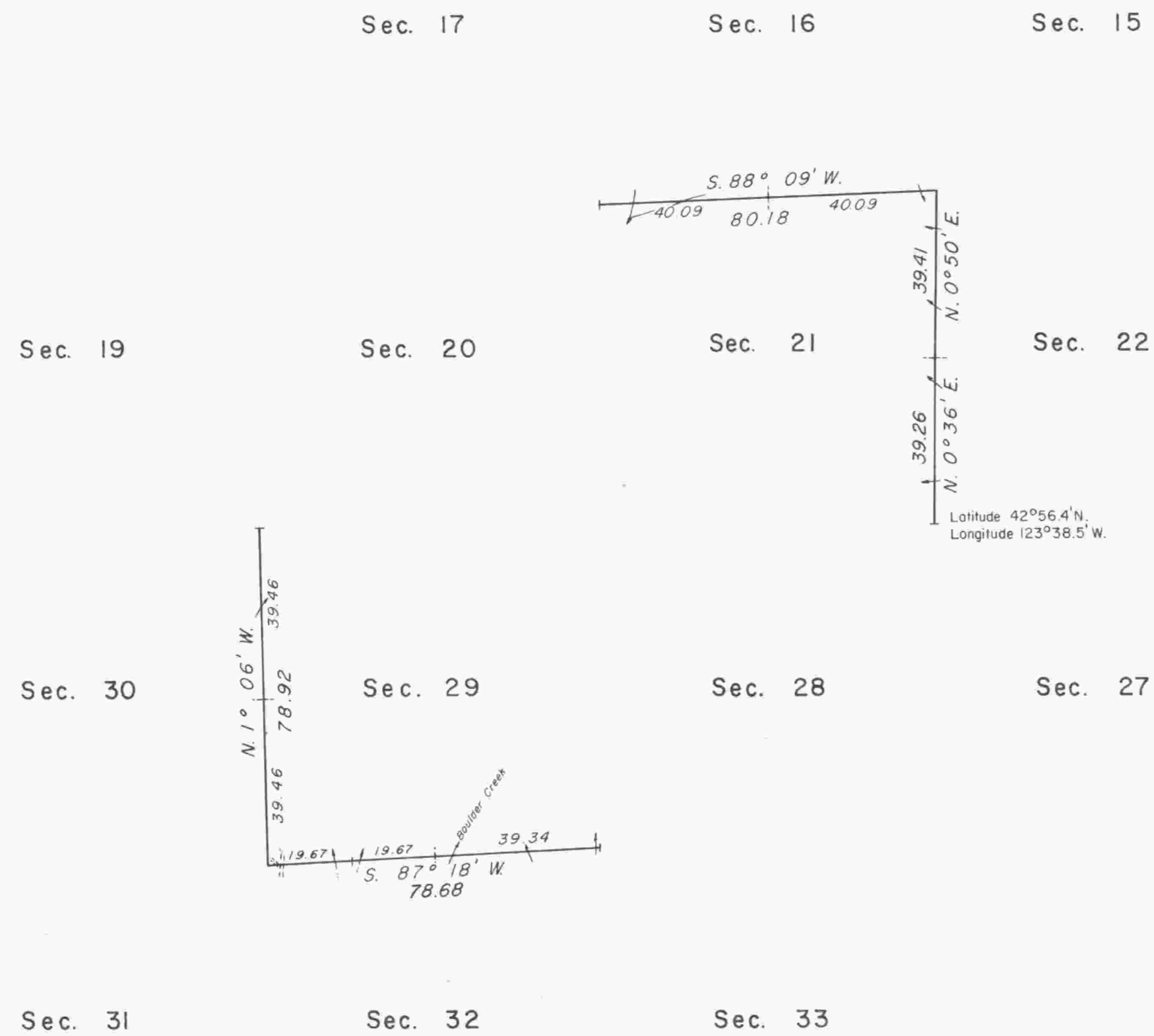
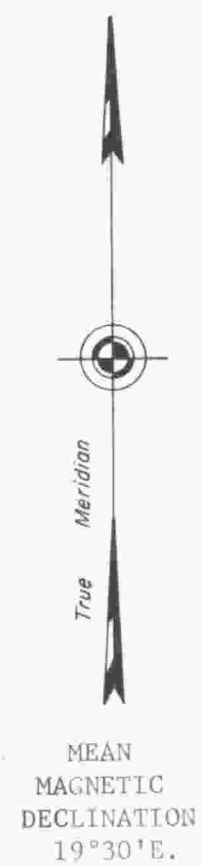
This plat represents a dependent resurvey of a portion of the subdivisional lines, T. 30 S., R. 8 W., Willamette Meridian, Oregon, designed to restore the corners in their true original locations according to the best available evidence.

The subdivisional lines of the township were surveyed by William H. Byars, in 1882.

Certain section corners within the township were remonumented without survey by C. Albert White and Donald R. Beck, in 1963-64.

The line between sections 19 and 20 was resurveyed by Charles E. Akin, Jr., in 1972.

The resurvey was executed by G. Steven Popken and James J. Carlson, Cadastral Surveyors, from April 24, 1975, to May 15, 1975, under Special Instructions dated April 15, 1975, which provide for the surveys included under Group No. 866, Oregon.

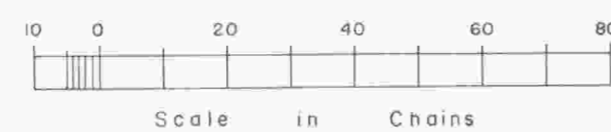


UNITED STATES DEPARTMENT OF THE INTERIOR
BUREAU OF LAND MANAGEMENT
Washington, D.C. June 26, 1978

This plat is strictly conformable to the approved field notes, and the survey, having been correctly executed in accordance with the requirements of law and the regulations of this Bureau, is hereby accepted.

For the Director

Bernard W. Fisher
Chief, Division of Cadastral Survey



Timber in this area consists of fir, cedar, hemlock, and yew.