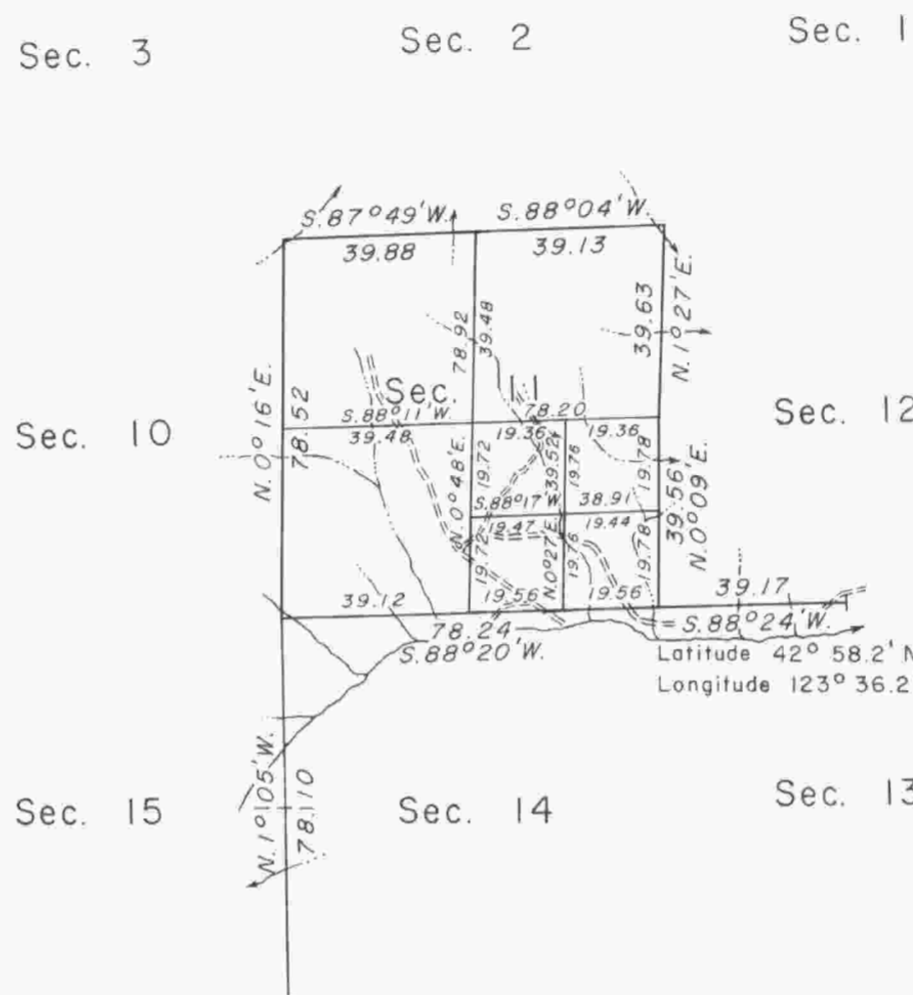


TOWNSHIP 30 SOUTH, RANGE 8 WEST, OF THE WILLAMETTE MERIDIAN, OREGON.

DEPENDENT RESURVEY, SUBDIVISION, AND REMONUMENTATION



This plat represents a retracement and reestablishment of a portion of the subdivisional lines and remonumentation of certain original corner points, designed to restore the corners in their true original locations according to the best available evidence; and, the subdivision of section 11. Lottings and areas are as shown on the plat approved July 28, 1883.

The subdivisional lines were surveyed by William H. Byars in 1882.

These surveys executed by Donald R. Beck and C. Albert White, May 20, 1963, to July 15, 1964, under Special Instructions dated May 7, 1964, and May 3, 1957, for Group Nos. 548 and 350, Oregon.

⊕ Corners remonumented in 1963 under Group No. 350.



Mean
Magnetic
Declination
19° 30' East

Sec. 20	Sec. 21	Sec. 22	Sec. 23
	⊕		
Sec. 29	⊕	Sec. 28	
	⊕	⊕	
Sec. 32	⊕	Sec. 33	

UNITED STATES DEPARTMENT OF THE INTERIOR
BUREAU OF LAND MANAGEMENT
Washington, D. C. August 20, 1965

This plat is strictly conformable to the approved field notes, and the survey, having been correctly executed in accordance with the requirements of law and the regulations of this Bureau, is hereby accepted.

For the Director

Clark I. Lumm

Acting Chief, Division of Engineering

Timber in this area consists of Douglas fir, white fir, pine, hemlock, cedar, madrone, dogwood, alder, maple, chinquapin, yew, and oak.



Chains

Area resurveyed: 640 Acres