

TOWNSHIP 30 SOUTH, RANGE 7 WEST, OF THE WILLAMETTE MERIDIAN, OREGON

Date: 11/18/2011 By: JC
This survey consists of:
Map: THIS PLAT
Narrative: WITH A COPY IN
Corner Rpt: VOL. 57 PG 22687

RETRACEMENT

DOUGLAS COUNTY SURVEYOR

This plat constitutes the entire record of the retracement of a portion of the subdivisional lines, Township 30 South, Range 7 West, Willamette Meridian, Oregon.

The history of the official surveys pertaining to this retracement is as follows:

In 1882, William H. Byars, U.S. Deputy Surveyor, surveyed a portion of the subdivisional lines, as shown on plat of official survey approved July 28, 1883.

In 1975, James E. Jelley, Cadastral Surveyor, dependently resurveyed a portion of the subdivisional lines, as shown on plat of official survey accepted May 1, 1978.

The survey was executed in accordance with the specification set forth in the Manual of Surveying Instructions (2009), and the special instructions dated March 16, 2007, approved March 21, 2007, for Group No. 2300, Administrative File No. 0907, Oregon.

The direction of the lines are based on the true meridian as determined by Global Positioning System (GPS) techniques and carried forward by sustained angulation using conventional survey techniques. All measurements along the lines were derived through the use of electronic measuring equipment. Measured distances and directions have been adjusted by computer software that incorporates a least squares adjustment routine. The adjusted mean bearings and mean horizontal ground elevation distances are reported to the nearest second and 0.01 foot.

Each new bearing tree has a 2 1/2 inch x 1/4 inch magnetic nail (Mag Nail) driven at the base on right side center, unless otherwise noted in the corner description.

Only those lines bounding public land were blazed.

The geographic position shown hereon was determined by a tie from a temporary GPS control point, utilizing dual frequency, carrier phase GPS receivers, and processed using the National Geodetic Survey's Online Positioning User Service (OPUS).

Survey executed by Kenneth W. Saveland, Cadastral Surveyor, beginning March 25, 2010 and completed April 13, 2010. He was assisted by Robert NMI Durning and Joel R. Herzberg, Surveying Technicians.

LEGEND

□ Corner previously established or reestablished

UNITED STATES DEPARTMENT OF THE INTERIOR
BUREAU OF LAND MANAGEMENT

Portland, Oregon

The survey represented by this plat, having been correctly executed in accordance with the requirements of law and the regulations of this Bureau, is hereby accepted.

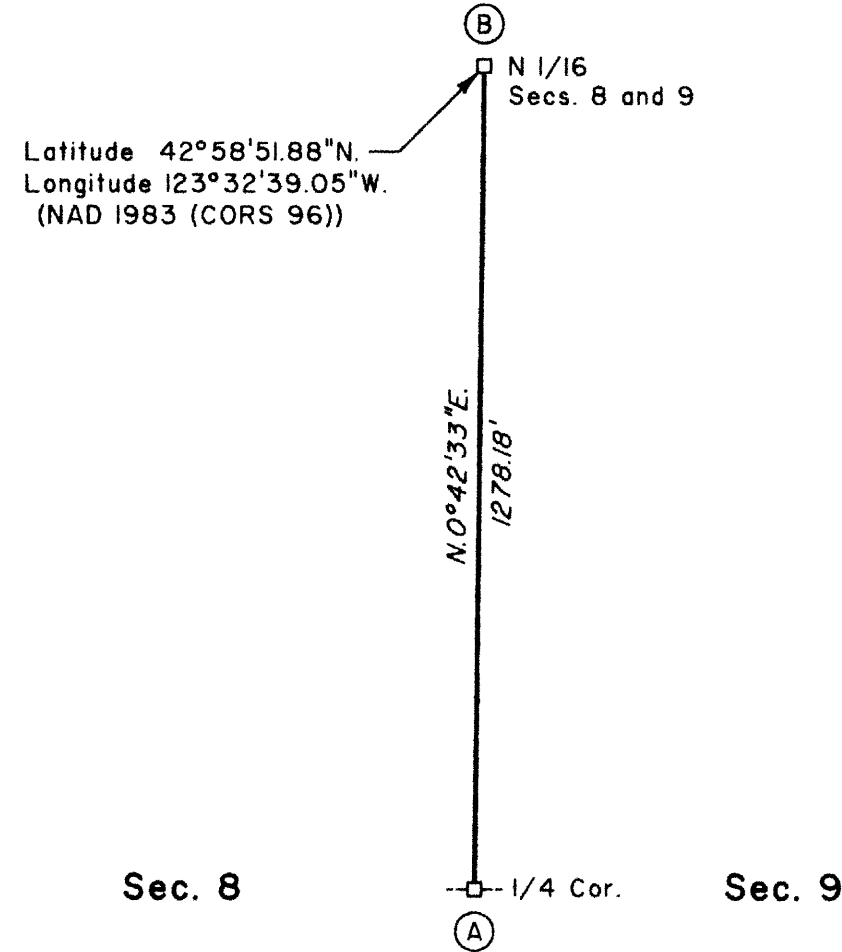
For the Director

Mary J. M. Hartzel

Chief Cadastral Surveyor of Oregon

September 6, 2011

Date



Latitude 42°58'51.88"N.
Longitude 123°32'39.05"W.
(NAD 1983 (CORS 96))

(A) The 1/4 sec. cor. of secs. 8 and 9, monumented with an iron post, 2 1/2 ins. diam., projecting 4 ins. above ground, with a brass cap mkd.

1/4
S 8 | S 9
T 30 S R 7 W
1975

from which bearing trees mkd. by Jelley in 1975

A fir, 23 ins. diam., bears S. 32° E., 51.2 ft. dist., with a healed blaze.

A fir, 18 ins. diam., bears S. 74 1/2° W., 39.6 ft. dist., with a healed blaze.

(B) The N 1/16 sec. cor. of secs. 8 and 9, monumented with an iron post, 2 1/2 ins. diam., firmly set, projecting 7 ins. above ground, with a brass cap mkd.

N 1/16
S 8 | S 9
1975

from which bearing trees mkd. by Jelley in 1975

A fir, 19 ins. diam., bears N. 38 1/4° E., 18.5 ft. dist., with a healed blaze.

A fir, 14 ins. diam., bears N. 55 1/2° W., 12.9 ft. dist., with a healed blaze.



I, Kenneth W. Saveland, Cadastral Surveyor, HEREBY CERTIFY upon honor, that in pursuance of special instructions bearing the approval date of the 21st day of March, 2007, and the assignment instructions bearing the date of the 24th day of February, 2010, I have retraced a portion of the subdivisional lines, Township 30 South, Range 7 West, Willamette Meridian, Oregon, which is represented upon this plat as having been executed by me and under my direction; and that said survey has been made in strict conformity with said special instructions, the Manual of Surveying Instructions, and in the specific manner described on this plat.

Kenneth W. Saveland
Cadastral Surveyor

November 31, 2011
Date



OFFICIALLY FILED: 10/13/2011