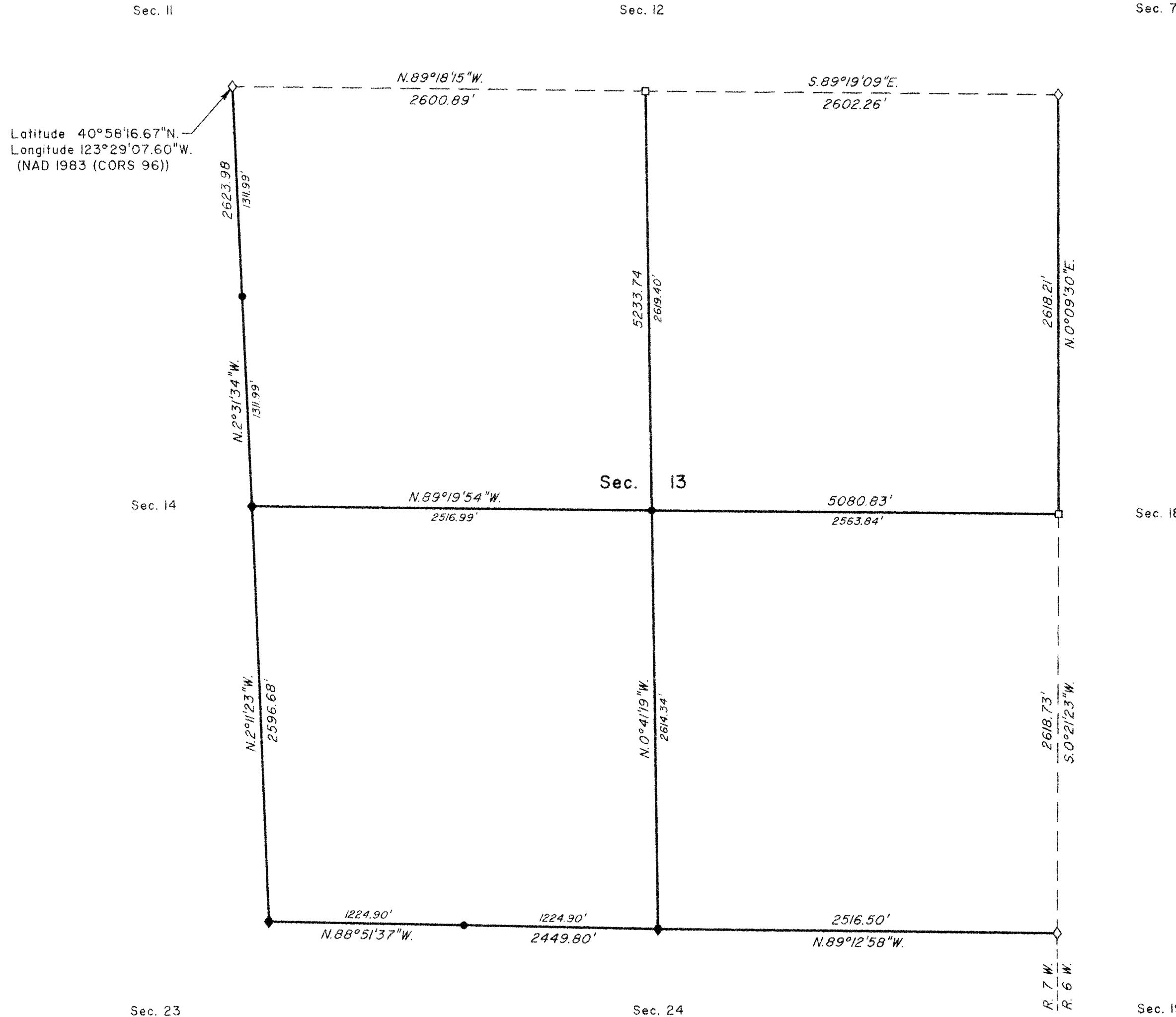


TOWNSHIP 30 SOUTH, RANGE 7 WEST, OF THE WILLAMETTE MERIDIAN, OREGON

DEPENDENT RESURVEY AND SUBDIVISION OF SECTION 13

FILED
 Date: 7/20/2010 By: JC
 This survey consists of:
 Map: BLM LINE NOTES
 Narrative: VOL. 56
 Corner Rpt: PGS 22126-22140

DOUGLAS COUNTY
 SURVEYOR



A history of surveys is contained in the field notes.

This plat represents the dependent resurvey of a portion of the east boundary and subdivisional lines, T. 30 S., R. 7 W., Willamette Meridian, Oregon, designed to restore the corners in their true original locations according to the best available evidence, and the subdivision of section 13.

Measured distances and directions have been adjusted by computer software that incorporates a least squares adjustment routine. The adjusted bearings and distances are reported to the nearest second and 0.01 foot.

The lottings and areas are as shown on the plat approved October 1, 1872.

The survey was executed by Kenneth W. Saveland, Cadastral Surveyor, beginning April 14, 2008, and completed May 13, 2008, pursuant to Special Instructions dated March 31, 2008, under Group Number 2191, Oregon.

LEGEND

- ◇ Original corner previously remonumented
- ◆ Original corner remonumented this survey
- Corner previously established or reestablished
- Corner established or reestablished this survey

UNITED STATES DEPARTMENT OF THE INTERIOR
 BUREAU OF LAND MANAGEMENT

Portland, Oregon

This plat is strictly conformable to the approved field notes, and the survey, having been correctly executed in accordance with the requirements of law and the regulations of this Bureau, is hereby accepted.

For the Director

Mary J. M. Hunter

Chief Cadastral Surveyor of Oregon

May 4, 2010
 Date

