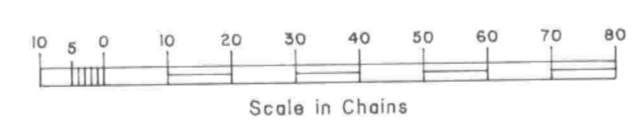
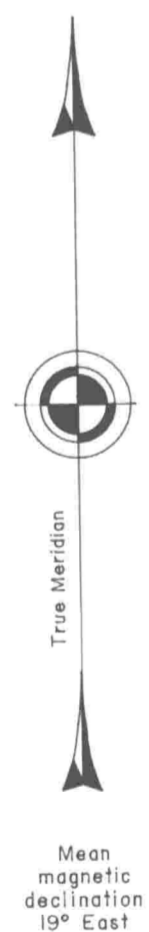
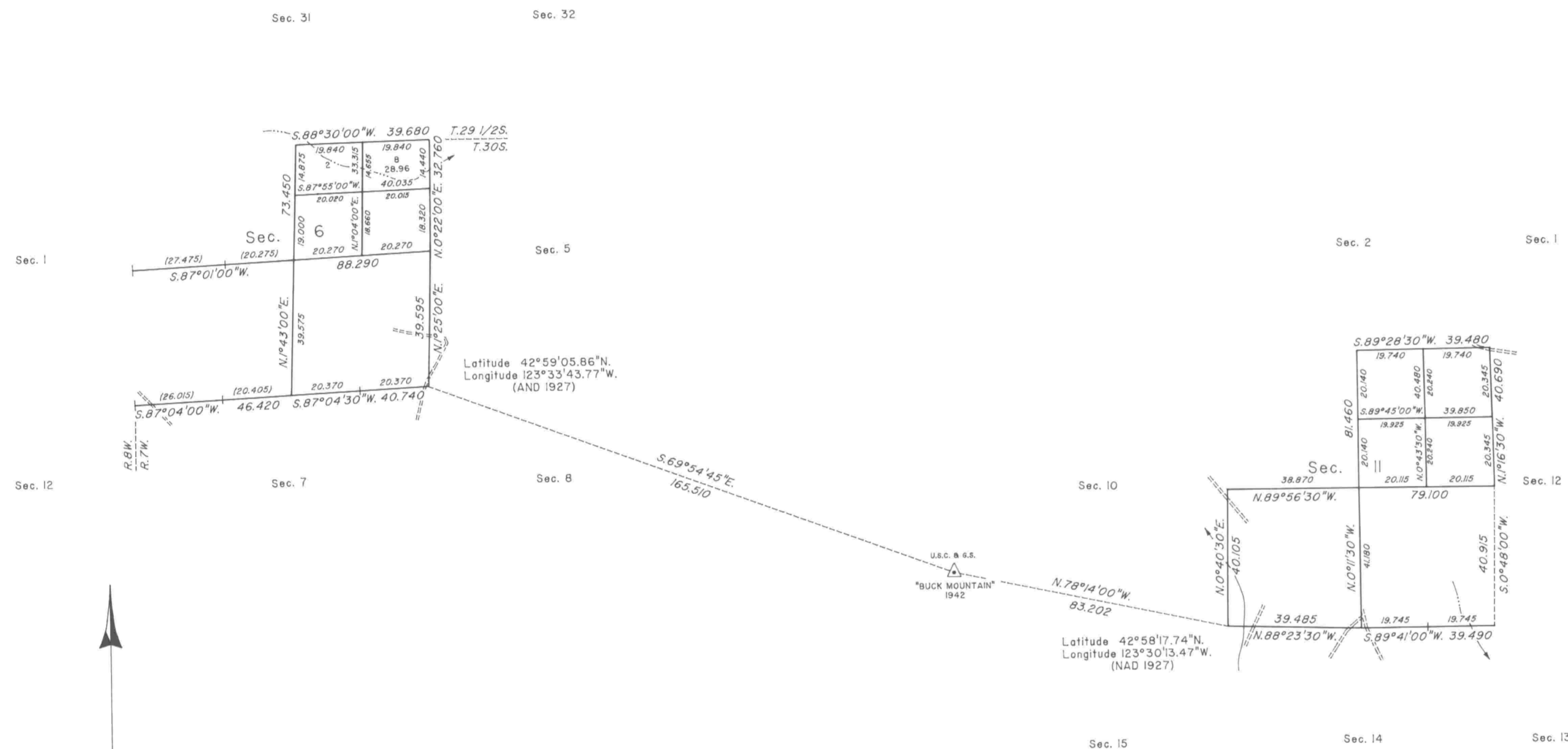


TOWNSHIP 30 SOUTH, RANGE 7 WEST, OF THE WILLAMETTE MERIDIAN, OREGON

DEPENDENT RESURVEY AND SUBDIVISION OF SECTIONS



A history of surveys is contained in the field notes.

This plat represents a dependent resurvey of a portion of the north boundary and subdivisional lines, T. 30 S., R. 7 W., Willamette Meridian, Oregon, designed to restore the corners in their true original locations according to the best available evidence, and the subdivision of sections 6 and 11.

Except as shown hereon, the lottings and areas are as shown on the plats approved October 1, 1872 and July 28, 1883.

The survey was executed by Wayne L. Rogers, Dale T. Bedell and Boyd W. Peterson, Cadastral Surveyors, beginning September 6, 1988, and completed February 28, 1989, pursuant to Special Instructions dated August 8, 1988, and Supplemental Special Instructions dated August 17, 1988, under Group Number 1456, Oregon.

Timber in this area consists of fir, pine, hemlock, cedar, yew, cascara, oak, ash, dogwood, madrone, alder, maple, cherry and chinquapin.

UNITED STATES DEPARTMENT OF THE INTERIOR
BUREAU OF LAND MANAGEMENT

Portland, Oregon August 26, 1992

This plat is strictly conformable to the approved field notes, and the survey, having been correctly executed in accordance with the requirements of law and the regulations of this Bureau, is hereby accepted.

For the Director

Wayne M. Gardner
Chief Cadastral Surveyor of Oregon