

TOWNSHIP 30 SOUTH, RANGE 7 WEST, OF THE WILLAMETTE MERIDIAN, OREGON.  
DEPENDENT RESURVEY

This plat represents a dependent resurvey of a portion of the subdivisional lines, T. 30 S., R. 7 W., Willamette Meridian, Oregon, designed to restore the corners in their true original locations according to the best available evidence.

The lottings and areas are as shown on the plat approved July 28, 1883.

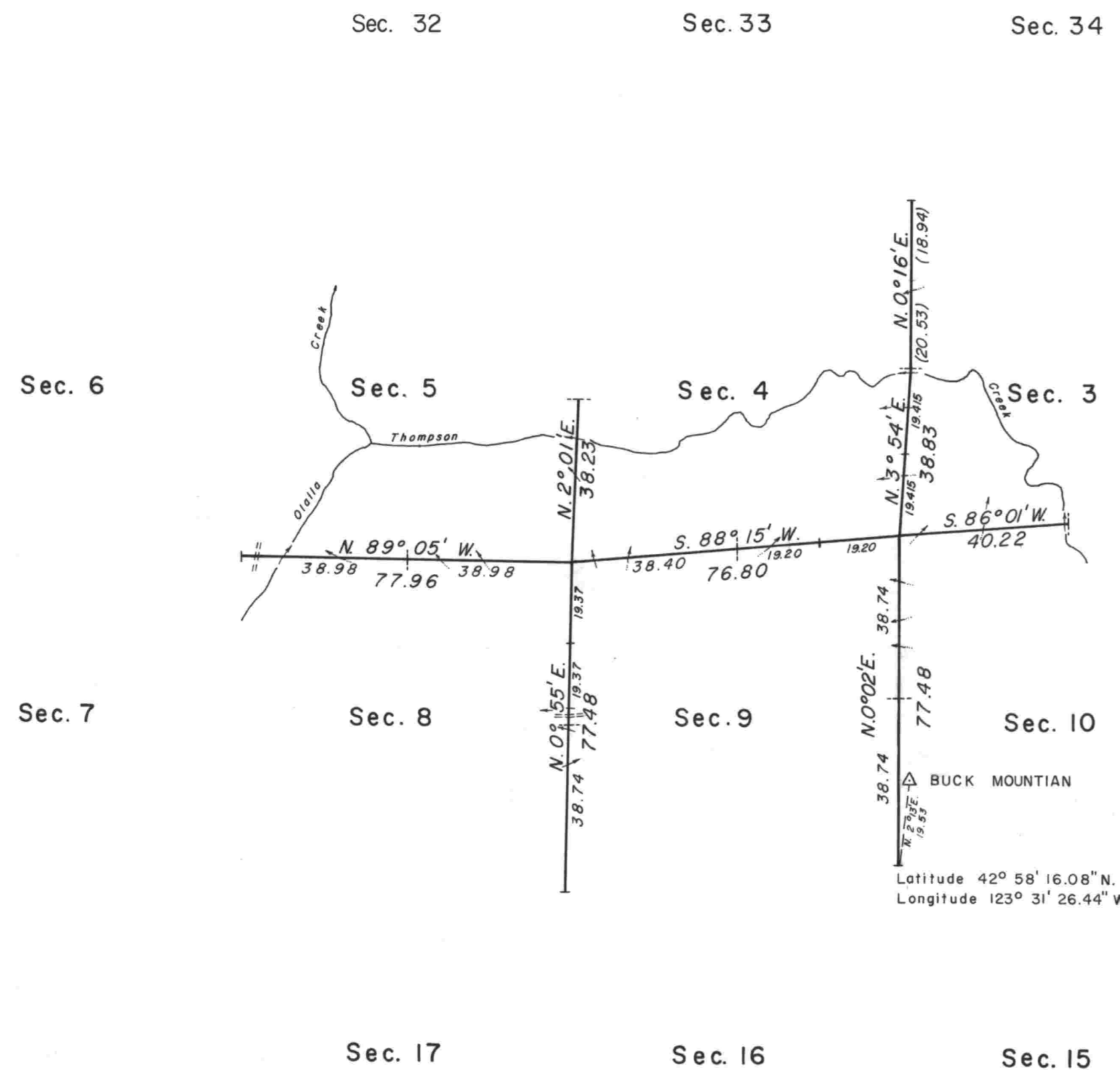
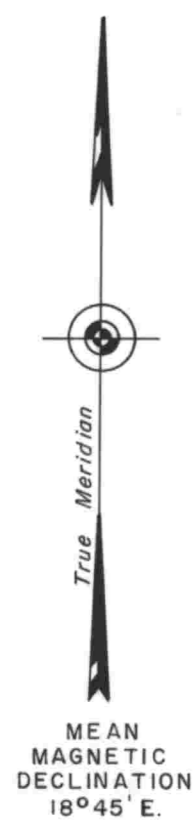
The north boundary of the township was surveyed by Nathaniel Ford, in 1854.

A portion of the north boundary was resurveyed and a portion of the subdivisional lines was surveyed by William H. Byars, in 1882.

A portion of the north boundary was resurveyed by Fred Mensch, in 1924.

A portion of the subdivisional lines was resurveyed by John M. Jelley, in 1965.

The resurvey was executed by James E. Jelley, Cadastral Surveyor, from August 21, 1975, to October 6, 1975, under Special Instructions dated August 5, 1975, which provide for the surveys included under Group No. 880, Oregon.

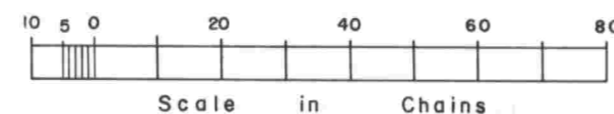


UNITED STATES DEPARTMENT OF THE INTERIOR  
BUREAU OF LAND MANAGEMENT  
Washington, D.C.      May 1, 1978

This plat is strictly conformable to the approved field notes, and the survey, having been correctly executed in accordance with the requirements of law and the regulations of this Bureau, is hereby accepted.

For the Director

*Bernard W. Foster*  
Chief, Division of Cadastral Survey



Timber in this area consists of fir, hemlock, cedar, maple, myrtle, oak, chinquapin, and alder.