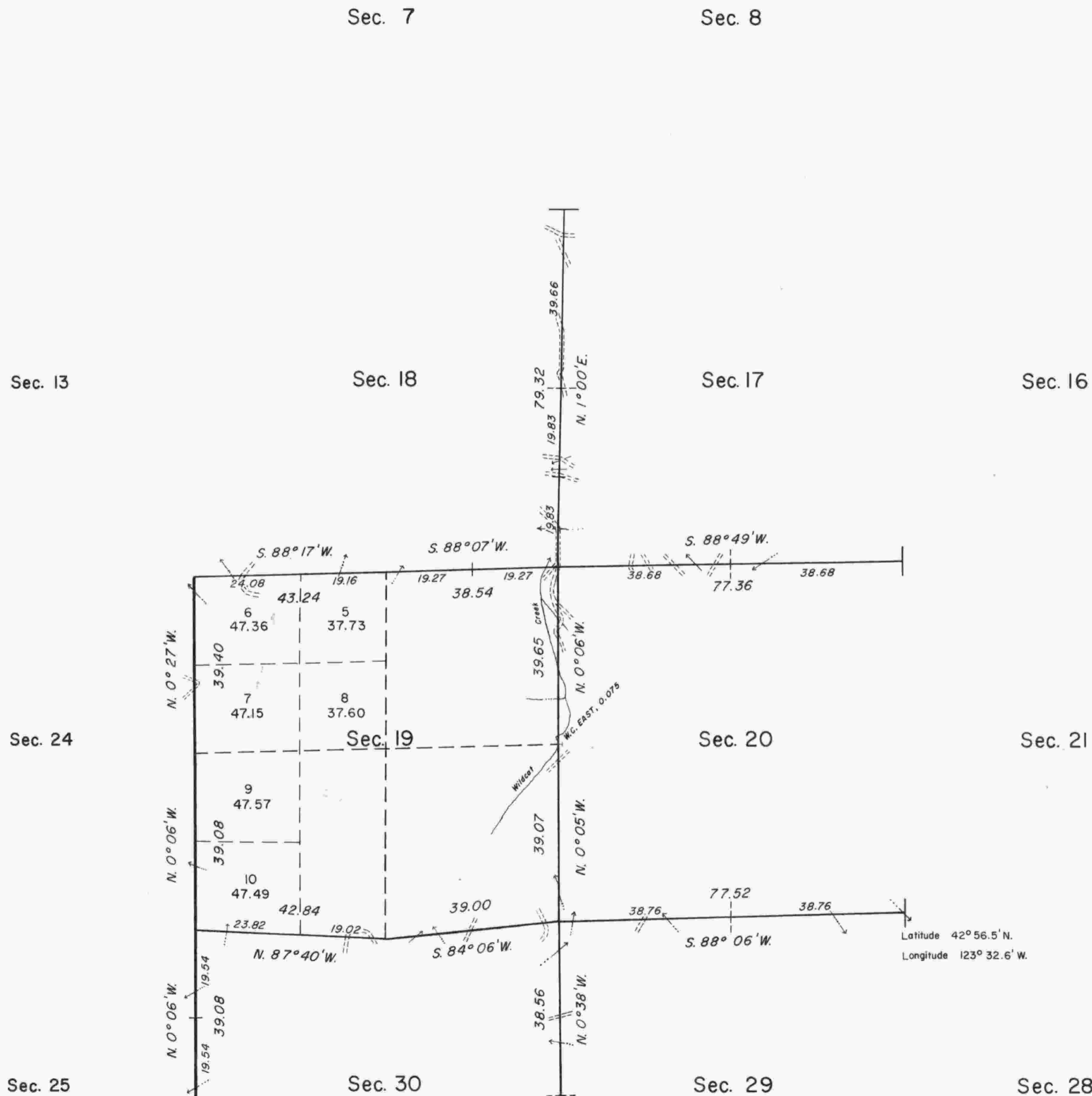


TOWNSHIP 30 SOUTH, RANGE 7 WEST, OF THE WILLAMETTE MERIDIAN, OREGON.

DEPENDENT RESURVEY



This plat represents a retracement and reestablishment of a portion of the west boundary, and subdivisional lines, T. 30 S., R. 7 W., Willamette Meridian, Oregon designed to restore the corners in their true original location according to the best available evidence; and excepting as new or modified vacant subdivisions as shown hereon, the lottings and areas are as shown on the plat approved July 28, 1883.

The west boundary and a portion of the subdivisional lines of the township were surveyed by William H. Byars, in 1882.

The resurvey was executed by Stephen D. Albright and Jack W. Bowder, Cadastral Surveyors from July 10, 1972 to August 10, 1972 under Special Instructions dated July 6, 1972, and Supplemental Special Instructions dated July 12, 1972 which provide for the surveys included under Group No. 787, Oregon.

UNITED STATES DEPARTMENT OF THE INTERIOR
BUREAU OF LAND MANAGEMENT
Washington, D.C. April 28, 1975

This plat is strictly conformable to the approved field notes, and the survey, having been correctly executed in accordance with the requirements of law and the regulations of this Bureau, is hereby accepted.

For the Director

Bernard W. Johnson
Chief, Division of Cadastral Survey

Timber in this area consists of fir, hemlock, cedar, pine, live oak, maple, alder, and chinquapin.