

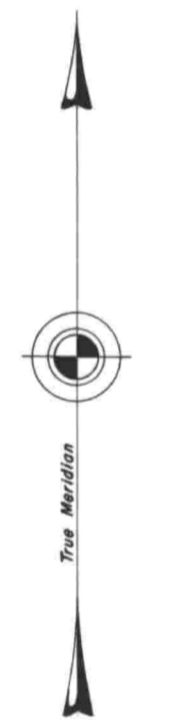
TOWNSHIP 30 SOUTH, RANGE 7 WEST, OF THE WILLAMETTE MERIDIAN, OREGON.

DEPENDENT RESURVEY

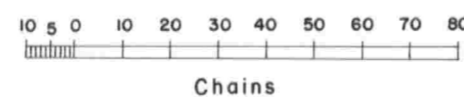
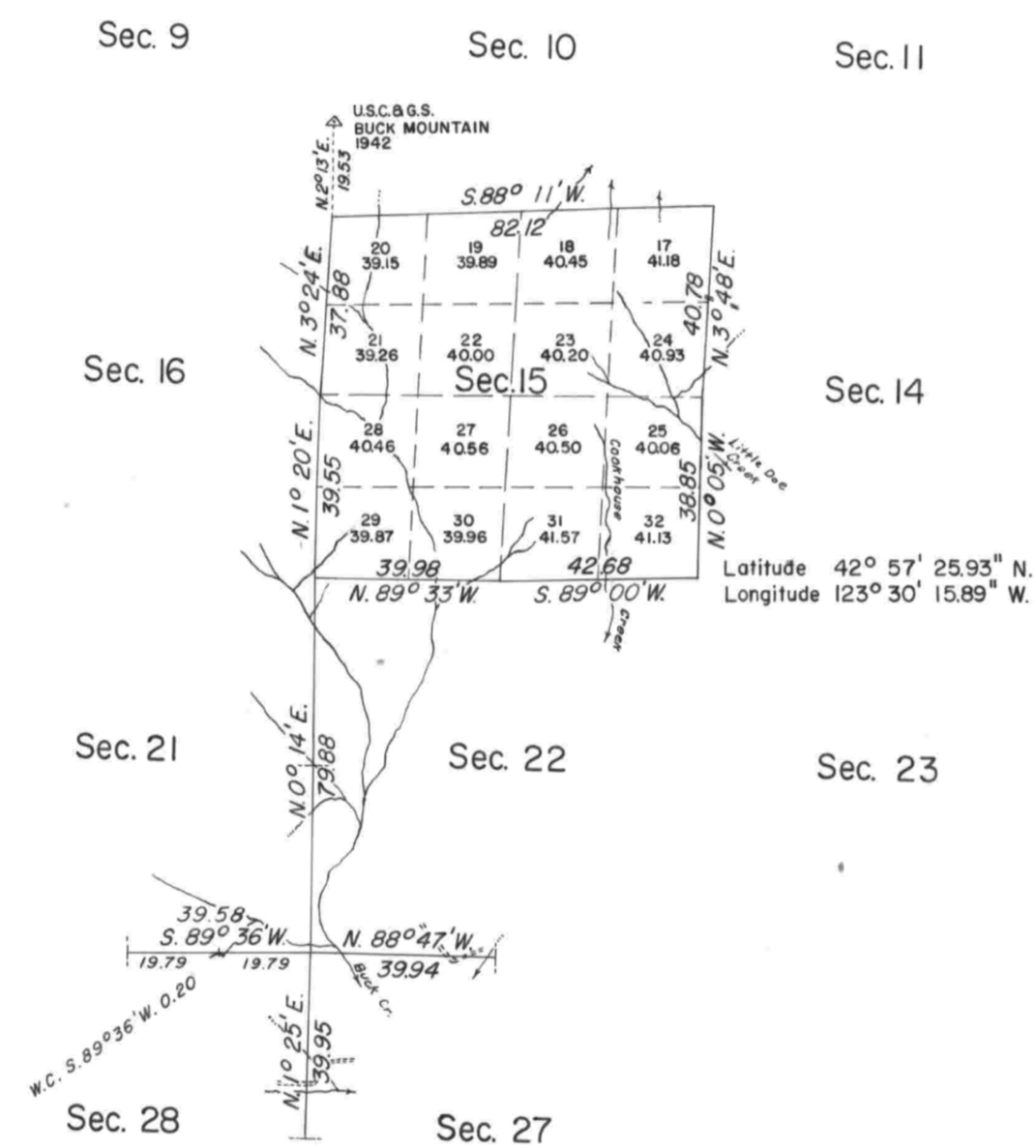
This plat represents a retracement and reestablishment of a portion of the subdivisional lines of T. 30 S., R. 7 W., Willamette Meridian, Oregon, designed to restore the corners in their true original locations according to the best available evidence. Modified vacant subdivisions are shown hereon.

A portion of the subdivisional lines were surveyed by William H. Byars in 1872, and a portion surveyed and resurveyed by him in 1882.

These surveys executed by John M. Jelley, May 28 to June 21, 1965, under Special Instructions dated April 20, 1965, and Supplemental Special Instructions dated June 14, 1965, which provide for the surveys included under Group No. 571, Oregon.



Mean
Magnetic
Declination
19°50' East



Area resurveyed: 645.17 Acres

Timber in this area consists of fir, cedar, pine, yew, madrone, chinquapin, live oak, oak, maple, and hemlock.

UNITED STATES DEPARTMENT OF THE INTERIOR
BUREAU OF LAND MANAGEMENT
Washington, D. C. June 24, 1966

This plat is strictly conformable to the approved field notes, and the survey, having been correctly executed in accordance with the requirements of law and the regulations of this Bureau, is hereby accepted.

For the Director

E. L. Hamilton
Chief, Division of Engineering

NES