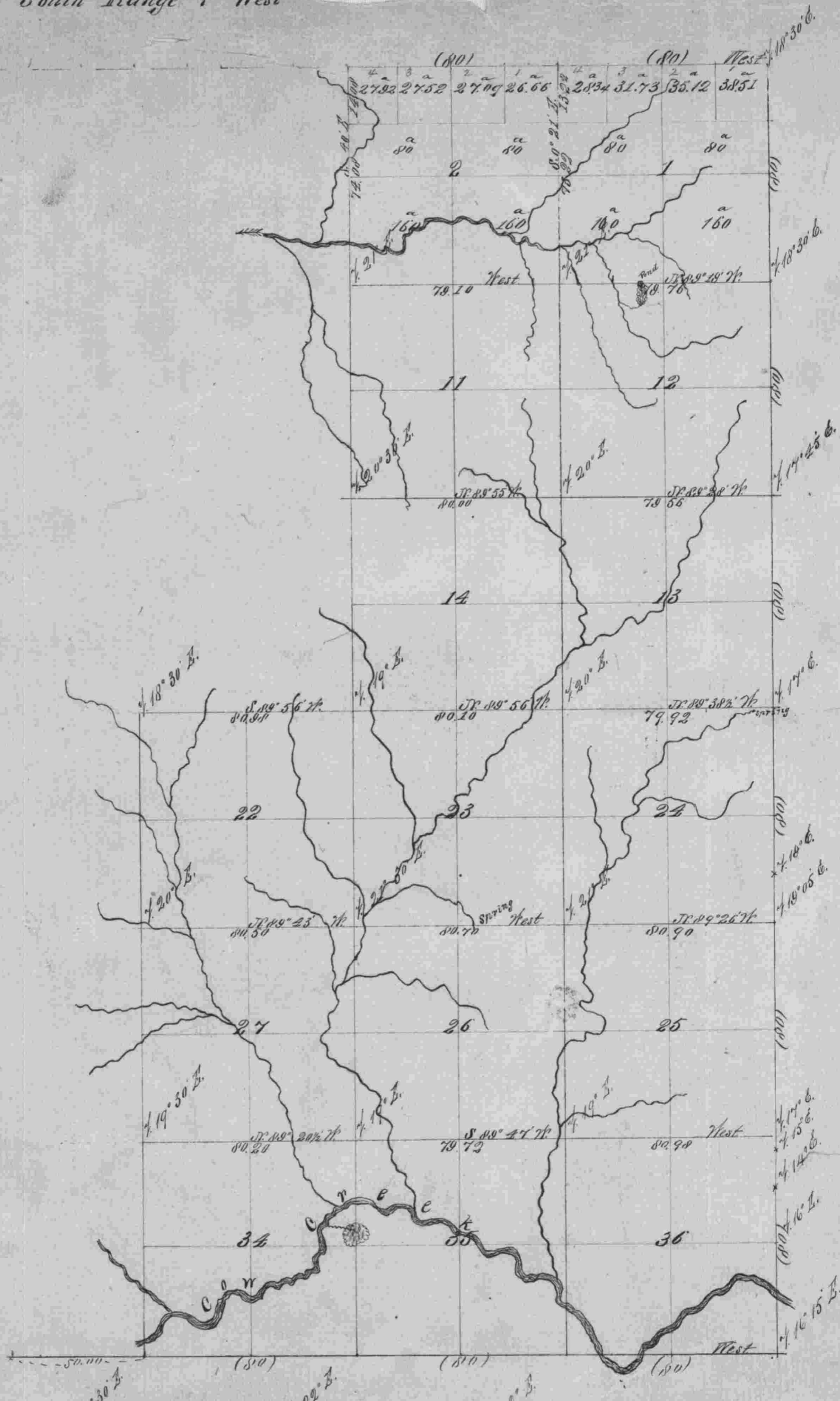
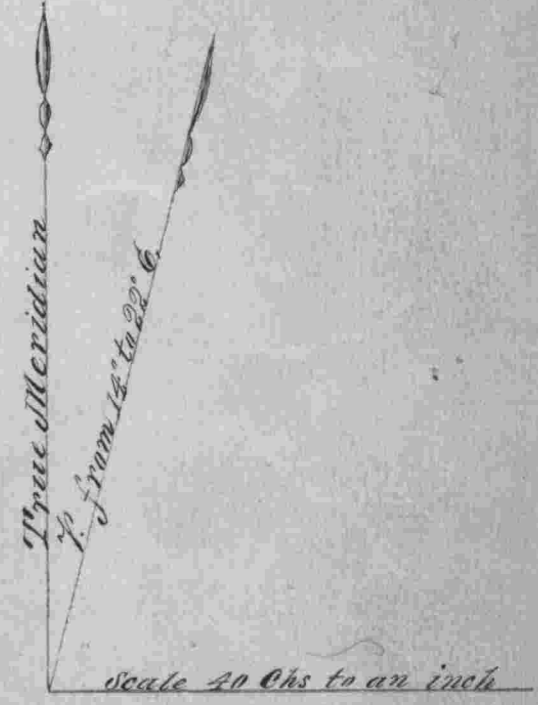


Sectins	Area Acres
1	0.2479
2	0.2479
3	0.2479
4	0.2479
5	0.2479
6	0.2479
7	0.2479
8	0.2479
9	0.2479
10	0.2479
11	0.2479
12	0.2479
13	0.2479
14	0.2479
15	0.2479
16	0.2479
17	0.2479
18	0.2479
19	0.2479
20	0.2479
21	0.2479
22	0.2479
23	0.2479
24	0.2479
25	0.2479
26	0.2479
27	0.2479
28	0.2479
29	0.2479
30	0.2479
Totals	32.00



See certificate
Ex. 107

General Description
 The lands surveyed in this Township are equal in the common average of 36 acre lands the greater portion fit only for grazing purposes. It is well timbered with the usual varieties of Fir, Pine, Cedar, Laurel, Oak, &c. Several creeks furnish an unusual amount of water power. Gold is obtained from the bars of Cur creek, and a Copper mine considered very rich exists in sec. 8. There are five settlements above miners claims in this Township, viz. Sec. 1, 8, 11, 27 and 35 and a greater portion of the Rail Road land is already applied for.



Lines	Contractor	Sta	Contract Date	Amt. Surveyed		Commenced	Completed
				Miles	Chs		
Subdivisions	W. H. Byers	152	June 3 ^d 1871	27	68 62	May 9 th 1872	May 10 th 1872

The above Map of the subdivisonal lines of T. 30 S. R. 7 West, Men. Oregon is strictly conformable to the original field notes of the survey thereof on file in this Office which have been examined and approved
 U.S. Gen. Land Office
 Eugene City Oct. 1st 1872
 W. H. Deuell
 Sur. Gen. Oregon