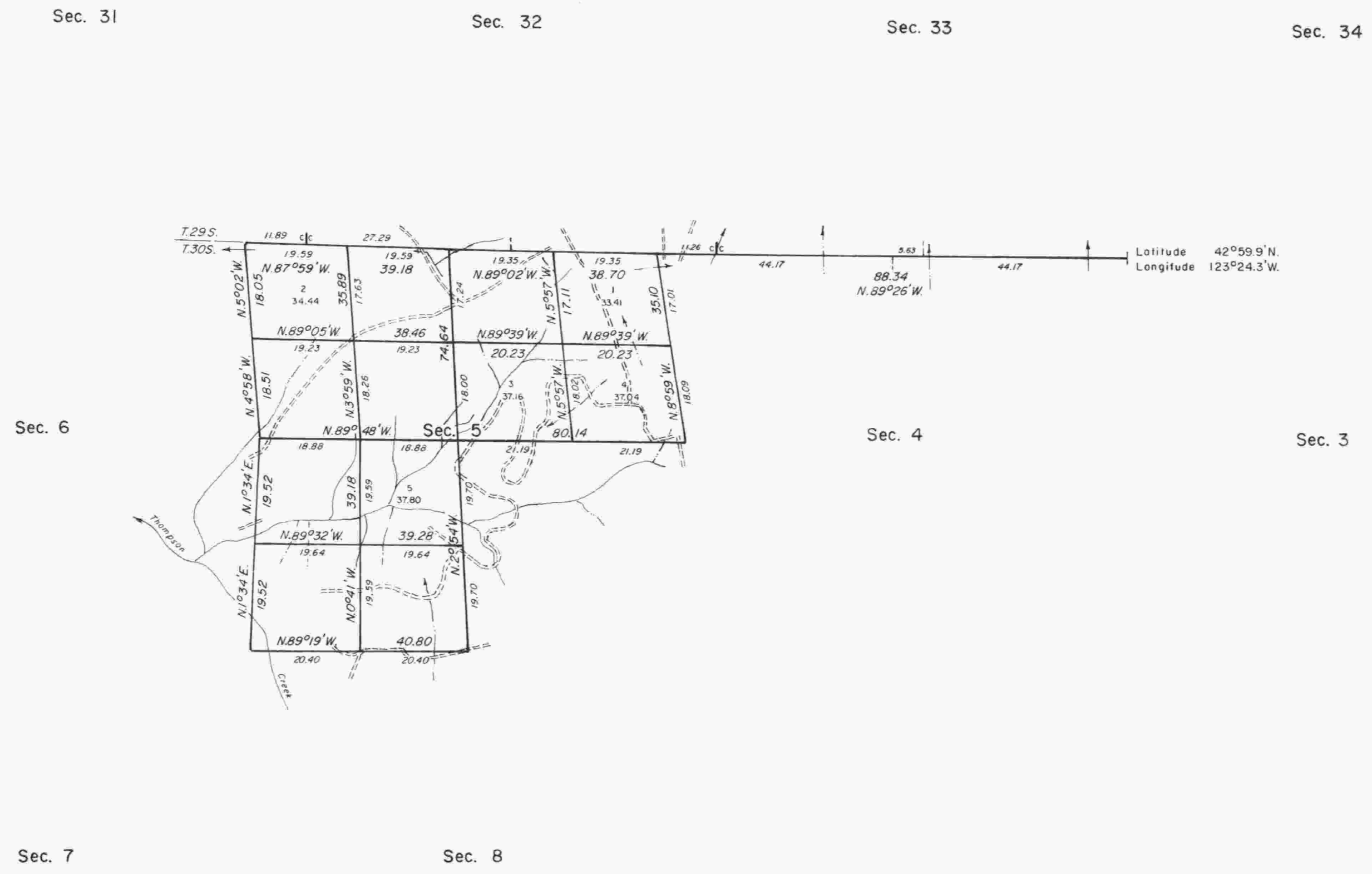


# TOWNSHIP 30 SOUTH, RANGE 6 WEST, OF THE WILLAMETTE MERIDIAN, OREGON.

## CORRECTIVE DEPENDENT RESURVEY, DEPENDENT RESURVEY AND SUBDIVISION OF SECTION 5



A history of surveys is contained in the field notes.

This plat represents a correction of the dependent resurvey of a portion of the north boundary, dependent resurvey of a portion of the north boundary and subdivisional lines and subdivision of section 5, designed to restore the corners in their true original locations according to the best available evidence. T. 30 S., R. 6 W., Willamette Meridian, Oregon.

The lottings and areas are as shown on the plat approved December 10, 1855.

Survey executed by James E. Jelley and Wayne L. Rogers, Cadastral Surveyors, beginning April 28, 1980, and completed October 1, 1980, pursuant to Special Instructions dated March 26, 1980 and September 15, 1980, for Group Nos. 1024 and 1039 Oregon.

Timber in this area consists of fir, hemlock, cedar, maple, pine, madrone, oak, alder, chinquapin and ash.

UNITED STATES DEPARTMENT OF THE INTERIOR  
BUREAU OF LAND MANAGEMENT  
Portland, Oregon August 19, 1982

This plat is strictly conformable to the approved field notes, and the survey, having been correctly executed in accordance with the requirements of law and the regulations of this Bureau, is hereby accepted.

For the Director

*William W. Glenn*

Chief Cadastral Surveyor of Oregon

