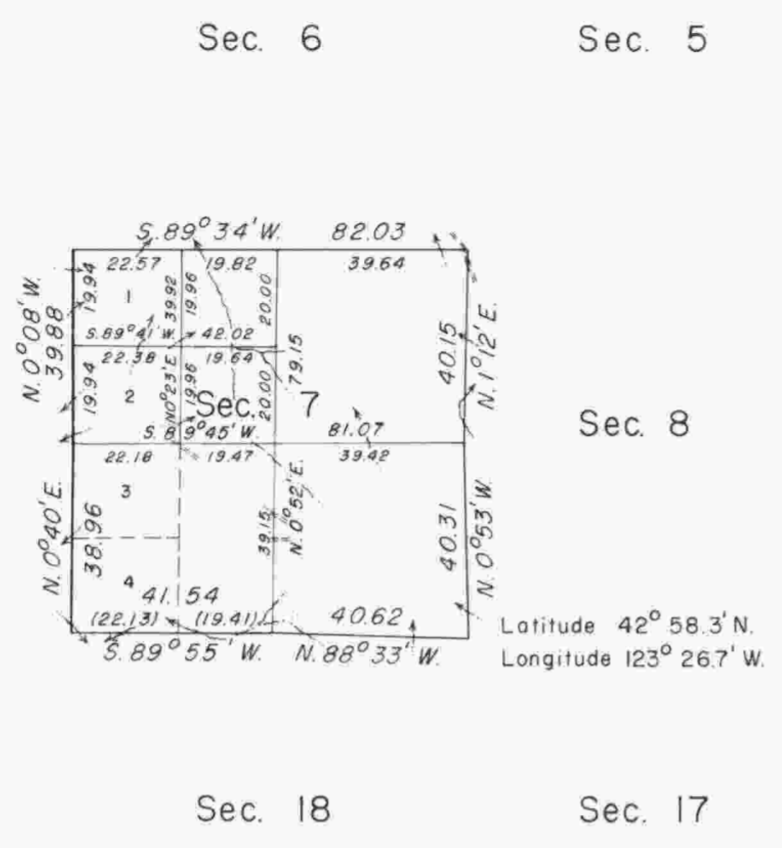


TOWNSHIP 30 SOUTH, RANGE 6 WEST, OF THE WILLAMETTE MERIDIAN, OREGON. DEPENDENT RESURVEY AND SUBDIVISION



This plat represents the resurvey of section 7, designed to restore the corners in their true original locations according to the best available evidence; and, the subdivision thereof. The lottings and areas are as shown on the plat approved December 10, 1855.

The west boundary and subdivisional lines were surveyed by Addison R. Flint in 1855.

These surveys executed by John M. Jelley and C. Albert White, May 21, 1963, to July 9, 1964, under Special Instructions dated May 3, 1957, and June 8, 1964, for Group Nos. 350 and 551, Oregon.

Timber in this area consists of fir, pine, cedar, madrone, oak, maple, and chinquapin.



Area resurveyed: 662.30 Acres

UNITED STATES DEPARTMENT OF THE INTERIOR
BUREAU OF LAND MANAGEMENT
Washington, D. C. August 20, 1965

This plat is strictly conformable to the approved field notes, and the survey, having been correctly executed in accordance with the requirements of law and the regulations of this Bureau, is hereby accepted.

For the Director

Clark J. Lumm

Acting Chief, Division of Engineering