

TOWNSHIP 30 SOUTH, RANGE 5 WEST, OF THE WILLAMETTE MERIDIAN, OREGON

Date: 9/18/2017 By: JC
 This survey consists of:
 Map: PLAT: T30-5 2017-1
 Narrative: VOL. 58 PAGES
 Corner Ref: 23490-23491
NO SEPARATE LINE NOTES
 ALL INFORMATION IS ON THE PLAT
 DOUGLAS COUNTY
 SURVEYOR

SHEET 1 OF 2

DEPENDENT RESURVEY

The history of official surveys pertaining to this survey is as follows:

In 1896, Oscar F. Thiel, U.S. Deputy Surveyor, surveyed a portion of the subdivisional lines, as shown on the official plat of survey approved November 6, 1897.

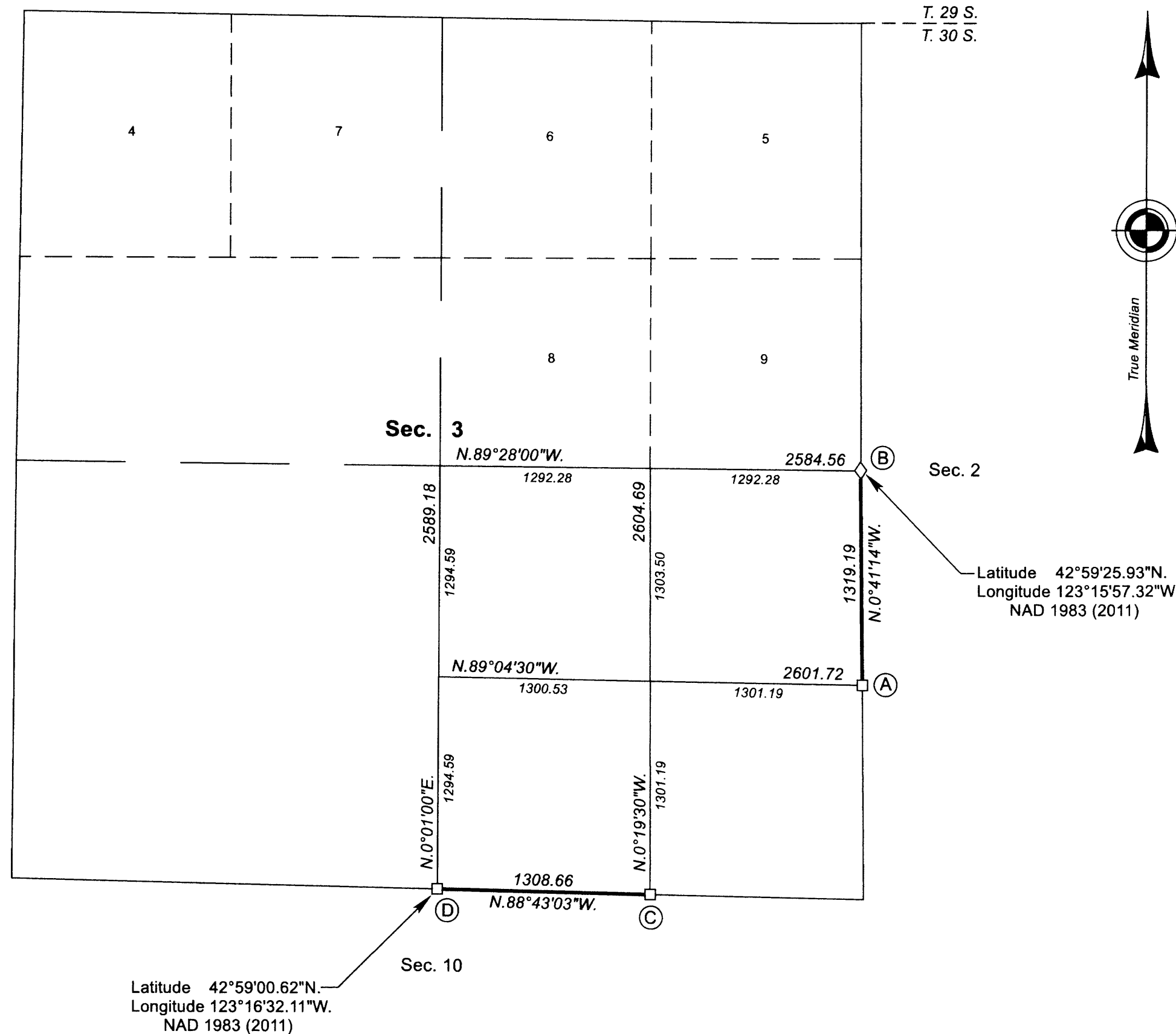
In 1967-69, Lynn M. Roseberry and James E. Jelley, Cadastral Surveyors, dependently resurveyed a portion of the subdivisional lines, as shown on the official plat of survey accepted May 31, 1978.

In 1990-91, Wayne L. Rogers, Cadastral Surveyor, subdivided sections 3 and 10, as shown on the official plat of survey accepted January 4, 1994.

The following local surveys filed in the Douglas County Surveyor's Office are referred to in the subsequent corner descriptions and are referenced by surveyor's last name, official title or Professional Engineer (PE) No., and year.

Date	Name and Registration Number	File Number
1951	John H. Markham, Jr., PE No. 2880	CS40/250A
1963	James W. Byron, Deputy Co Surveyor	CS53/26

NOTE:
 The interior lightweight lines with bearings and distances of section 3 shown were surveyed by Wayne L. Rogers in 1990-91, and were utilized to calculate the Federal interest land in section 3.



This plat constitutes the entire record of the dependent resurvey of portions of the subdivisional lines, Township 30 South, Range 5 West, Willamette Meridian, Oregon, designed to restore the corners in their true original locations according to the best available evidence.

The directions of the lines are based on the true meridian as determined by Global Positioning Systems (GPS) techniques and carried forward by sustained angulation using conventional survey techniques. All measurements along the lines were derived through the use of GPS and conventional survey techniques. Measured distances and directions have been adjusted by computer software that incorporates a least squares adjustment routine. The adjusted mean bearings and mean horizontal ground elevation distances are reported to the nearest second and 0.01 foot.

Official areas based on the measurements of this survey have been returned for Federal interest land where indicated. Aliquot part legal subdivisions retain their aliquot characteristics and refer to precisely the same land as that which was previously identified by its original survey or description. A lot can only be subdivided by survey or supplemental plat. Except as shown hereon, the lottings and areas are as shown on the plat approved November 6, 1897, and plats accepted May 31, 1978 and January 4, 1994.

Preliminary to the resurvey, the lines of the official original surveys and resurveys were retraced and a search was made for all corners, lines, other calls of record, and where available, collateral evidence of local surveys and corners. Identified corners were perpetuated in their original positions. The retracement data was thoroughly verified and only the true line field data are given hereon.

Each new bearing tree has a 2 1/2 inch x 1/4 inch magnetic nail (Mag Nail) driven at the base on right side center, unless otherwise noted in the corner description. Only those lines bounding Federal interest land were blazed.

The geographic positions shown hereon were determined by ties from temporary GPS control points utilizing dual frequency, carrier phase GPS receivers, and processed using the National Geodetic Survey's Online Positioning User Service (OPUS).

The survey was executed in accordance with the specifications set forth in the Manual of Surveying Instructions (2009), and the special instructions approved September 3, 2015, for Group No. 2812, Oregon, by Jeffrey O. Covington, Cadastral Surveyor, beginning September 17, 2015, and completed September 24, 2015. He was assisted by Robert NMI Durning, Marc A. Montpas and Justin B. Dyer, Surveying Technicians.

LEGEND	
◇	Original corner previously remonumented
□	Corner previously established or reestablished

UNITED STATES DEPARTMENT OF THE INTERIOR
 BUREAU OF LAND MANAGEMENT

Portland, Oregon

The survey represented by this plat, having been correctly executed in accordance with the requirements of law and the regulations of this Bureau, is hereby accepted.

For the Director
Mary J. M. Hartzel
 Chief Cadastral Surveyor of Oregon

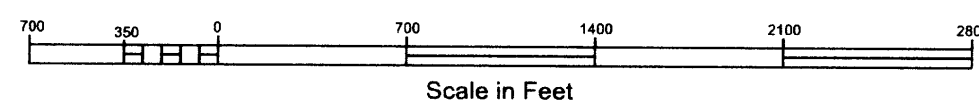
May 18, 2017
 Date

LEGAL SUBDIVISION	OFFICIAL ACRES
SECTION 3	
NE 1/4 SE 1/4	38.93
NW 1/4 SE 1/4	38.65
SW 1/4 SE 1/4	38.86
TOTAL AREA	116.44
FEDERAL INTEREST LAND RESURVEYED	

I, JEFFREY O. COVINGTON, Cadastral Surveyor, HEREBY CERTIFY upon honor, that in pursuance of special instructions bearing the approval date of the 3rd day of September, 2015, and the assignment instructions bearing the date of the 3rd day of September, 2015, I have dependently resurveyed portions of the subdivisional lines, Township 30 South, Range 5 West, Willamette Meridian, Oregon, which is represented upon this plat as having been executed by me and under my direction; and that said survey has been made in strict conformity with said special instructions, the Manual of Surveying Instructions, and in the specific manner described on this plat.

Jeffrey O. Covington
 Cadastral Surveyor

5/10/2017
 Date



OFFICIALLY FILED: 7/20/2017

TOWNSHIP 30 SOUTH, RANGE 5 WEST, OF THE WILLAMETTE MERIDIAN, OREGON

SHEET 2 OF 2

DEPENDENT RESURVEY

FILED
Date: 9/18/2017 By: JC
This survey consists of:
Map: PLAT: T30-5 2017-1
Narrative: VOL. 58 PAGES
Corner Rpt: 23490-23491
DOUGLAS COUNTY SURVEYOR

OFFICIALLY FILED: 7/20/2017

(A) The S 1/16 sec. cor. of secs. 2 and 3,
monumented with an iron post, 2 1/2 ins. diam.,
firmly set, projecting 5 ins. above ground,
with brass cap mkd.

S 1/16
S 3 | S 2
1969

from which the bearing trees mkd.
by Roseberry and Jelley in 1967-69

A fir, 19 ins. diam., bears N. 19° E.,
23.1 ft. dist., with a healed blaze.

A fir, 20 ins. diam., bears S. 5° W.,
10.2 ft. dist., with a healed double blaze.

(B) The 1/4 sec. cor. of secs. 2 and 3,
monumented with an iron post, 2 1/2 ins. diam.,
firmly set, projecting 5 ins. above ground,
with brass cap mkd.

T 30 S R 5 W
1/4
S 3 | S 2
1969

from which the remains of an original
bearing tree

A fir, 35 ins. diam., bears N. 42 1/2° W.,
13.2 ft. dist., with a healed blaze.

and the remains of a bearing tree mkd.
by Markham, Jr., PE No. 2880, in 1951,
reported by Roseberry and Jelley in 1967-69

A hollowed, decayed fir stump, 18 ins. diam.,
bears S. 46 3/4° E., 5.9 ft. dist., with a
hollowed blaze.

and the bearing tree mkd. by Byron,
Deputy County Surveyor, in 1963, reported
by Roseberry and Jelley in 1967-69

A fir, 23 ins. diam., bears N. 3° E., 9.2 ft. dist.,
with a healed double blaze.

(C) The E 1/16 sec. cor. of secs. 3 and 10,
monumented with an iron post, 2 1/2 ins. diam.,
firmly set, projecting 5 ins. above ground,
with brass cap mkd.

S 3
E 1/16
S 10
1969

from which the bearing trees mkd.
by Roseberry and Jelley in 1967-69

A cedar, 25 ins. diam., bears S. 28° W.,
16.8 ft. dist., with a healed blaze.

A fir, 13 ins. diam., bears N. 64° W.,
9.9 ft. dist., with a healed blaze.

(D) The 1/4 sec. cor. of secs. 3 and 10,
monumented with an iron post, 2 1/2 ins. diam.,
firmly set, projecting 1 in. above ground,
with brass cap mkd.

T 30 S R 5 W
S 3
1/4
S 10
1990

from which the bearing trees mkd.
by Roseberry and Jelley in 1967-69,
reported by Rogers in 1990-91

A fir, 29 ins. diam., bears N. 62 3/4° E.,
106.3 ft. dist., with a healed double blaze.
(Record, N. 62° E.)

A maple, 29 ins. diam., bears N. 21° W.,
115.5 ft. dist., with a hollowed blaze.
(Record, N. 22° W.)

and the bearing tree mkd. by Rogers
in 1990-91

A fir, 20 ins. diam., bears S. 28 1/2° W.,
86.5 ft. dist., with a healed blaze.
(Record, S. 27° W.)

UNITED STATES DEPARTMENT OF THE INTERIOR
BUREAU OF LAND MANAGEMENT

Portland, Oregon

The survey represented by this plat, having
been correctly executed in accordance with the
requirements of law and the regulations of this
Bureau, is hereby accepted.

For the Director

May J. M. Hartz
Chief Cadastral Surveyor of Oregon

May 18, 2017
Date