

# TOWNSHIP 30 SOUTH, RANGE 5 WEST, OF THE WILLAMETTE MERIDIAN, OREGON

## RETRACEMENT AND REHABILITATION

FILED  
 Date: 4/30/2009 By: JC  
 This survey consists of:  
 Map: VOL. 55  
 Narrative: PAGE  
 Corner Rpt: 21741

DOUGLAS COUNTY  
 SURVEYOR

This plat represents the entire survey record of the retracement of a portion of the subdivisional lines and rehabilitation of certain corner points, T. 30 S., R. 5 W., Willamette Meridian, Oregon.

The history of the surveys pertaining to this retracement is as follows:

In 1855, Nathaniel Ford, U.S. Deputy Surveyor, surveyed a portion of the subdivisional lines.

In 1896, Oscar F. Thiel, U.S. Deputy Surveyor, surveyed the remainder of the subdivisional lines.

In 1967-69, Lynn M. Roseberry and James Jelley, Cadastral Surveyors, resurveyed a portion of the subdivisional lines.

In 1986, Wayne L. Rogers, Cadastral Surveyor, resurveyed a portion of the subdivisional lines and performed a corrective resurvey.

The retracement and rehabilitation was executed by Timothy J. Moore and A. Bert Skeesick, Cadastral Surveyors, and Robert H. Browning, Surveying Technician, beginning August 11, 2004, and completed August 24, 2004, pursuant to Special Instructions for Group 2000, dated February 22, 2002; Group 2100, dated March 8, 2004; and Group 2300, dated March 16, 2007; and Assignment Instructions dated May 18, 2004, and May 27, 2004; and Group 2100 re-Assignment dated March 16, 2007. They were assisted by Robert NMI Durning and Thomas A. Hallamon, Surveying Technicians.

The direction of the lines were determined by direct solar observations, and refers to the true meridian.

An analysis of the unadjusted field data assured a closure not exceeding 1:4000 in error. Conventionally measured distances and directions have been adjusted by computer software that incorporates a least squares adjustment routine. The adjusted bearings and distances are reported to the nearest second and 0.01 foot.

The lottings and areas are as shown on the plat approved November 6, 1897.

Except as shown hereon, the descriptions of the corners are as noted in the survey by Roseberry and Jelley in 1967-69.

The geographic positions shown hereon were determined by differentially corrected code phase GPS receiver observations, relative to the National Spatial Reference System.

### LEGEND

- ◊ Original corner previously remonumented
- Corner previously reestablished or established, rehabilitated

UNITED STATES DEPARTMENT OF THE INTERIOR  
 BUREAU OF LAND MANAGEMENT

Portland, Oregon

The resurvey and retracement represented by this plat, having been correctly executed in accordance with the requirements of law and the regulations of this Bureau, is hereby accepted.

For the Director

*Mary J. M. Hartzel*

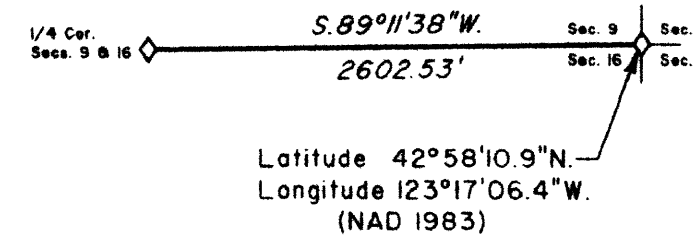
Chief Cadastral Surveyor of Oregon

*April 16, 2009*

Date

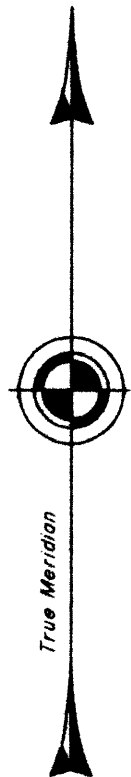
Sec. 9

Sec. 10



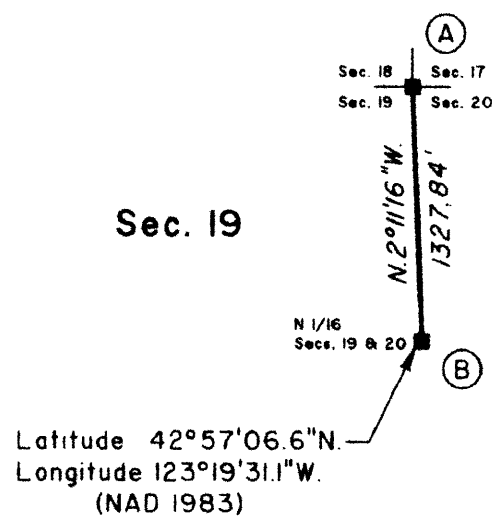
Sec. 16

Sec. 15



Sec. 18

Sec. 17



Sec. 19

Sec. 20

(A) The cor. of secs. 17, 18, 19 and 20, monumented with an iron post, 2 1/2 ins. diam. firmly set, projecting 15 ins. above the ground, with brass cap mkd. as reported by Roseberry and Jelley in 1969; from which the remains of bearing trees mkd. by Roseberry and Jelley

A fir snag, 37 ins. diam., bears N. 52° E., 121.8 ft. dist., with a healed blaze.

A sawed fir stump, 16 ins. diam., bears S. 39° E., 11.2 ft. dist., with illegible scribe marks visible on a partially healed blaze.

An oak, 12 ins. diam., bears S. 74° W., 28.2 ft. dist., with healed blaze. (Record 11.7 ft.)

An oak, 9 ins. diam., bears N. 26 1/2° W., 38.9 ft. dist., with healed blaze.

and new bearing trees

An oak, 5 ins. diam., bears N. 67° E., 30.3 ft. dist., mkd. X BT.

A madrone, 5 ins. diam., bears S. 67° E., 29.9 ft. dist., mkd. T30S R5W S20 BT.

From this corner, a local point, established by G. G. Stewart in 1922 and reported by Roseberry and Jelley, bears S. 43° 26' 07" E., 284.21 ft. dist. (record S. 43° 44' E., 283.8 ft.), monumented with an iron post, 1 1/4 ins. diam., firmly set projecting 8 ins. from the ground, brass cap removed by Douglas County Surveyors Office in 2004.

Corner is located on a very steep and rocky NW. slope, over looking Interstate Five (I-5).

(B) The N 1/16 sec. cor. of secs. 19 and 20, monumented with an iron post, 2 1/2 ins. diam. firmly set, projecting 2 ins. above the ground, with brass cap mkd. as reported by Roseberry and Jelley in 1969; from which the remains of a bearing tree mkd. by Roseberry and Jelley

A fir, 14 ins. diam., bears N. 81 1/2° E., 2.6 ft. dist., with a healed blaze.

and a new bearing tree

A fir, 10 ins. diam., bears N. 20° E., 24.3 ft. dist., mkd. N1/16 S20 BT.

We, Timothy J. Moore and A. Bert Skeesick, Cadastral Surveyors, and Robert H. Browning, Surveying Technician, HEREBY CERTIFY upon honor that in pursuance of Special Instructions bearing the 22nd day of February, 2002; the 8th day of March, 2004; and the 16th day of March, 2007, we have retraced a portion of the subdivisional lines and rehabilitated certain corner points in Township 30 South, Range 5 West, Willamette Meridian, Oregon. Said retracement and rehabilitation have been executed in strict conformity with said Special Instructions, the Manual of Instructions for the Survey of the Public Lands of the United States, and in specific manner described on this plat.

*Timothy J. Moore*  
 Cadastral Surveyor

*April 23, 2009*  
 Date

*A. B. Skeesick*  
 Cadastral Surveyor

*03/23/2009*  
 Date

*Robert H. Browning*  
 Surveying Technician

*03/23/2009*  
 Date



Scale in Feet