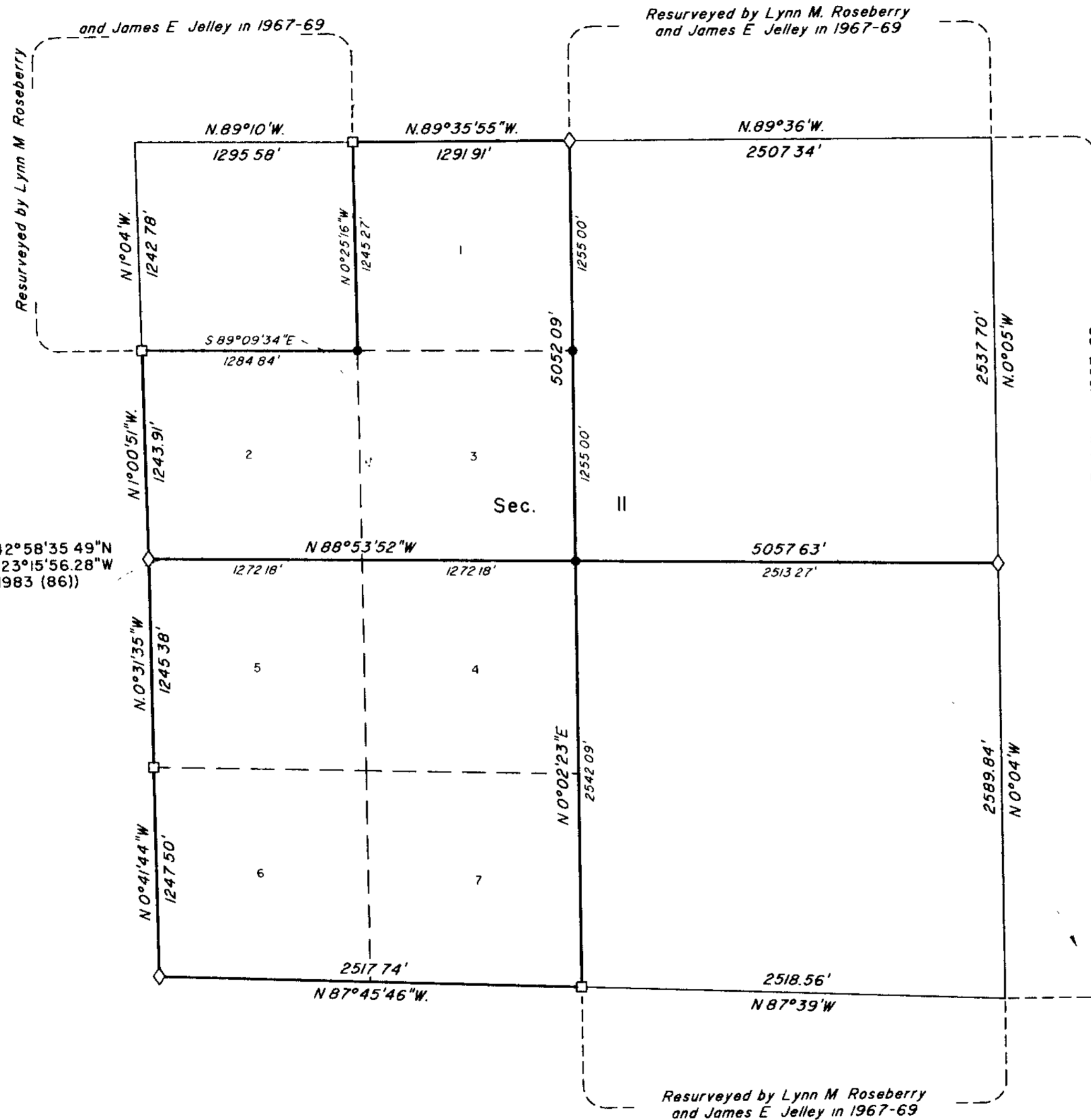


TOWNSHIP 30 SOUTH, RANGE 5 WEST, OF THE WILLAMETTE MERIDIAN, OREGON

DEPENDENT RESURVEY AND SUBDIVISION OF SECTION II

Sec 2



Sec 10

Latitude 42°58'35.49"N
 Longitude 123°15'56.28"W
 (NAD 1983 (86))

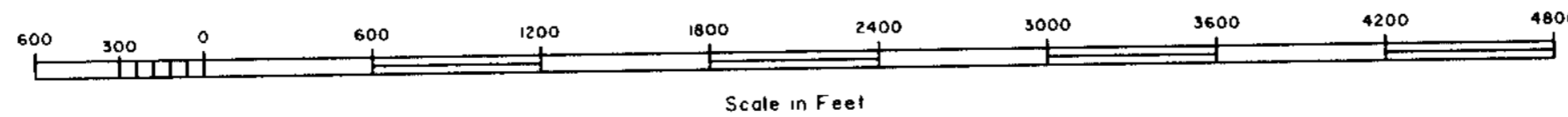


Mean magnetic declination 18 1/2° East

Sec 12

Sec 15

Sec 14



A history of surveys is contained in the field notes

This plat represents a dependent resurvey of a portion of the subdivisional lines, T 30 S., R 5 W., Willamette Meridian, Oregon, designed to restore the corners in their true original locations according to the best available evidence, and the subdivision of section II

Measured distances and directions have been adjusted by Cadastral Measurement Management (CMM), computer software that incorporates a least squares adjustment routine. The adjusted bearings and distances are reported to the nearest second and 0.01 foot.

The lottings and areas are as shown on the plat approved November 6, 1897, and the plat accepted May 31, 1978

The survey was executed by Timothy J Moore, Cadastral Surveyor, and Robert H Browning, Surveying Technician, beginning June 7, 1999, and completed August 3, 1999, pursuant to Special Instructions dated April 16, 1999, under Group Number 1906, Oregon.

Timber in this area consists of fir, hemlock, cedar, pine, alder, maple, oak, chinquapin, ash, yew, and madrone

LEGEND

- ◊ Original corner previously remonumented
- Corner previously established or reestablished
- Corner established or reestablished this survey

UNITED STATES DEPARTMENT OF THE INTERIOR
 BUREAU OF LAND MANAGEMENT

Portland, Oregon March 30, 2001

This plat is strictly conformable to the approved field notes, and the survey, having been correctly executed in accordance with the requirements of law and the regulations of this Bureau, is hereby accepted

For the Director

Chief Cadastral Surveyor of Oregon