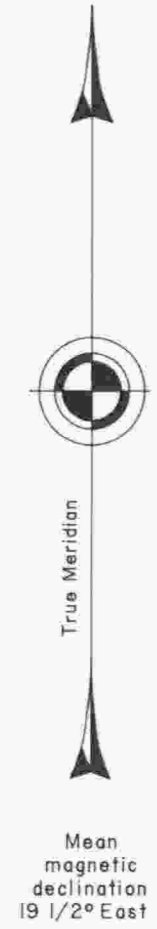


TOWNSHIP 30 SOUTH, RANGE 5 WEST, OF THE WILLAMETTE MERIDIAN, OREGON
 CORRECTIVE DEPENDENT RESURVEY AND REMONUMENTATION



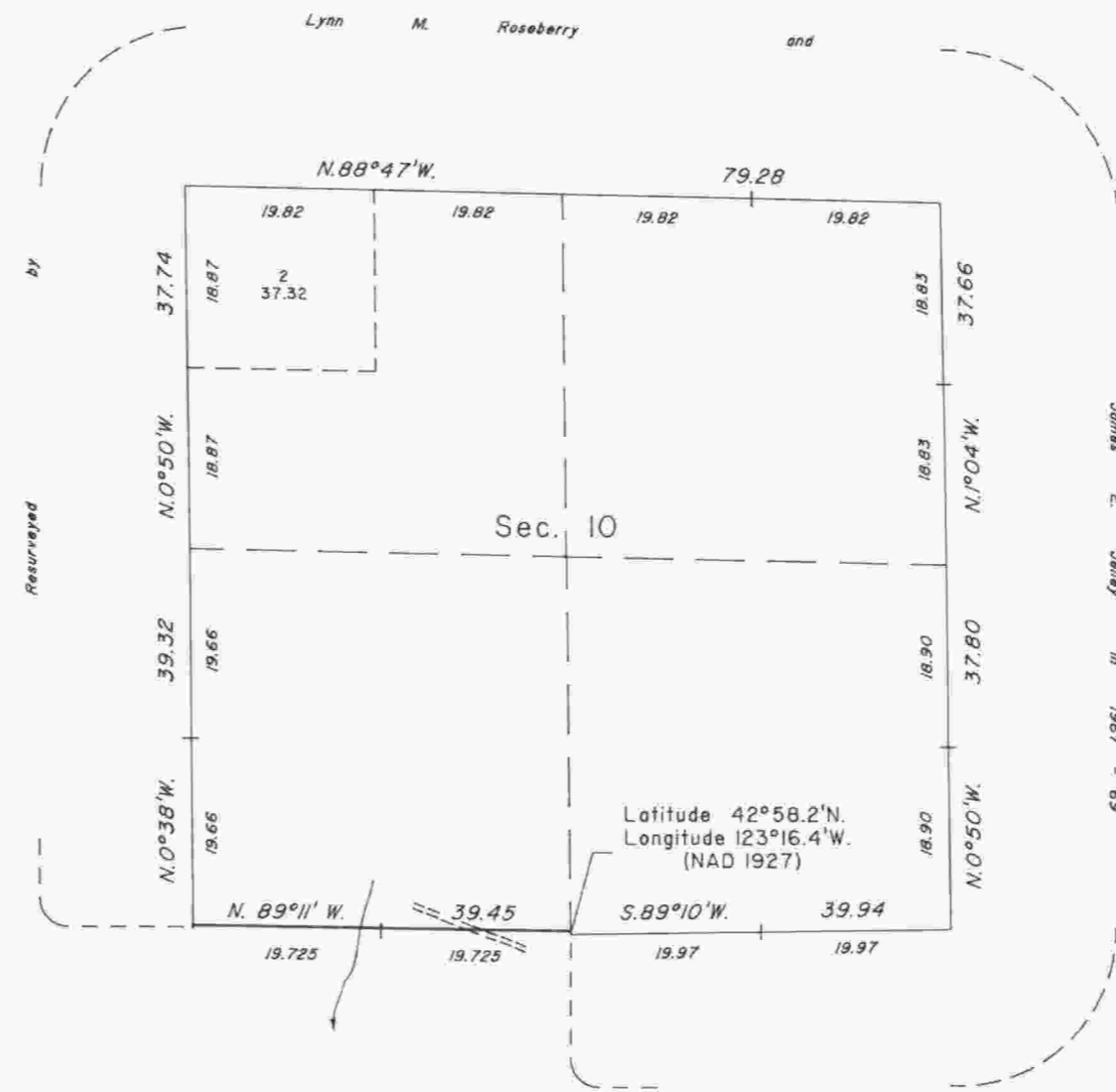
Sec. 8

Sec. 9

Sec. 17

Sec. 16

Sec. 15



A history of surveys is contained in the field notes.

This plat represents a corrective dependent resurvey of a portion of the subdivisional lines and remonumentation and/or rehabilitation of certain corner points, T.30 S., R.5W., Willamette Meridian, Oregon, designed to restore the corners in their true original locations according to the best available evidence.

The resurvey remonumentation/rehabilitation were executed by Wayne L. Rogers, Cadastral Surveyor, on August 7, 1986, pursuant to Special Instructions dated July 13, 1979, and July 24, 1986, and Supplemental Special Instructions dated May 20, 1985, under Group Numbers 1000 and 1342, Oregon.

Timber in this area consists of fir, cedar, pine, yew, alder, madrone, maple, chinquapin, and willow.

UNITED STATES DEPARTMENT OF THE INTERIOR
BUREAU OF LAND MANAGEMENT

Portland, Oregon

March 3, 1989

This plat is strictly conformable to the approved field notes, and the survey, having been correctly executed in accordance with the requirements of law and the regulations of this Bureau, is hereby accepted.

For the Director

Wayne M. Rogers
 Chief Cadastral Surveyor of Oregon

