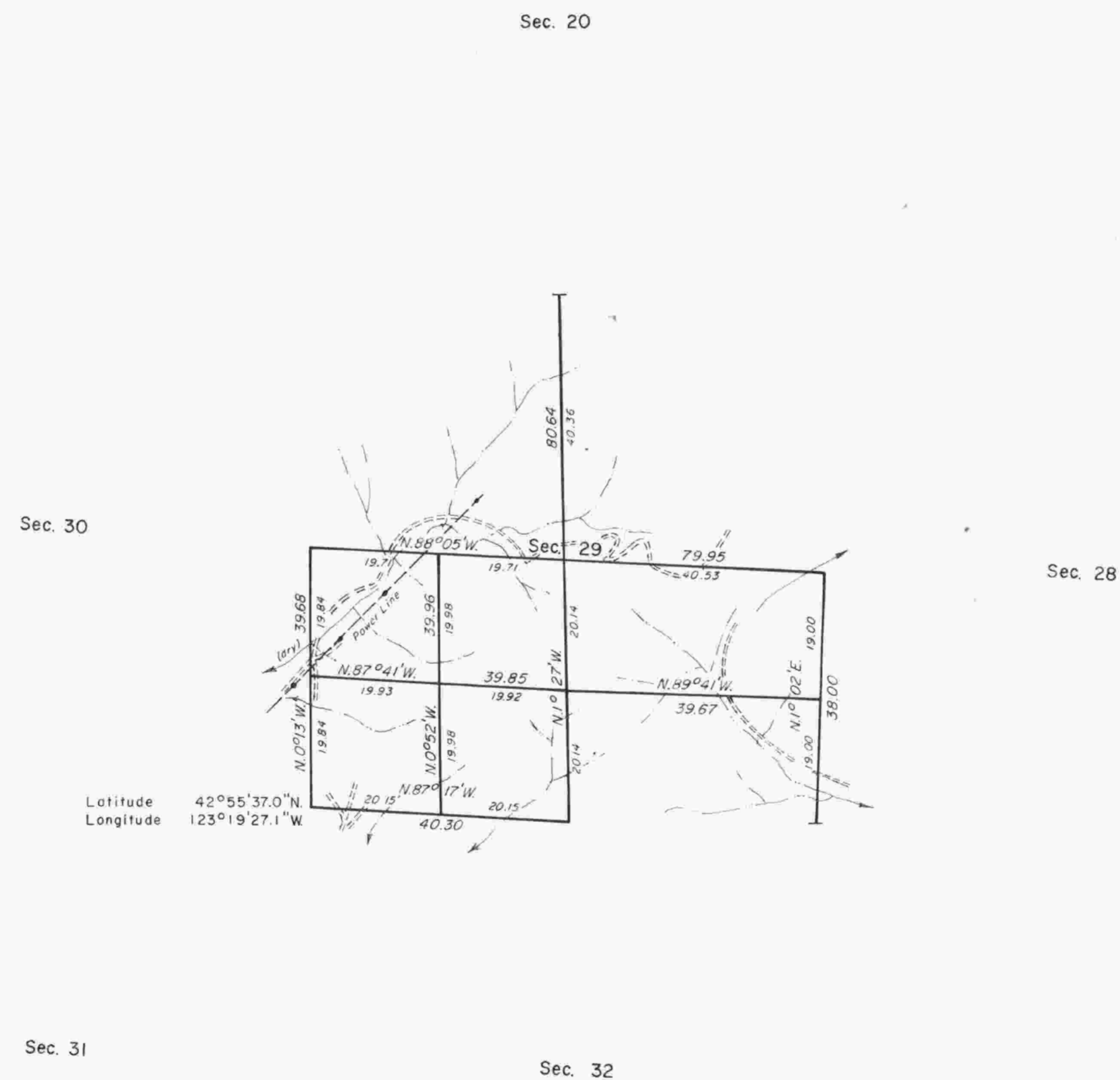
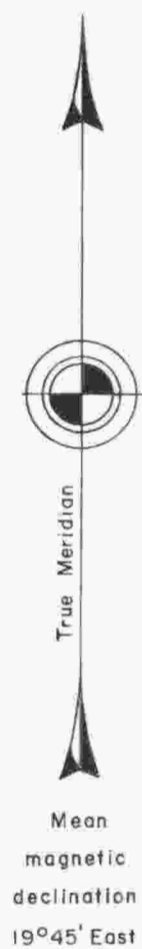


# TOWNSHIP 30 SOUTH, RANGE 5 WEST, OF THE WILLAMETTE MERIDIAN, OREGON.

## DEPENDENT RESURVEY AND SUBDIVISION OF SECTION 29



A history of surveys is contained in the field notes.

This plat represents a dependent resurvey of a portion of the subdivisional lines, T. 30 S., R. 5 W., Willamette Meridian, Oregon, and the subdivision of section 29.

The lottings and areas are as shown on the plat approved March 9, 1855.

The survey was executed by Wayne L. Rogers, Cadastral Surveyor, beginning August 5, 1981, and completed September 10, 1981, pursuant to Special Instructions dated June 15, 1981, for Group No. 1069, Oregon.

Timber in this area consists of fir, cedar, yew, pine, alder, chinquapin, oak, madrone, and ash.

UNITED STATES DEPARTMENT OF THE INTERIOR  
BUREAU OF LAND MANAGEMENT  
Portland, Oregon July 13, 1984

This plat is strictly conformable to the approved field notes, and the survey, having been correctly executed in accordance with the requirements of law and the regulations of this Bureau, is hereby accepted.

For the Director

*William W. Glenn*

Chief Cadastral Surveyor of Oregon

