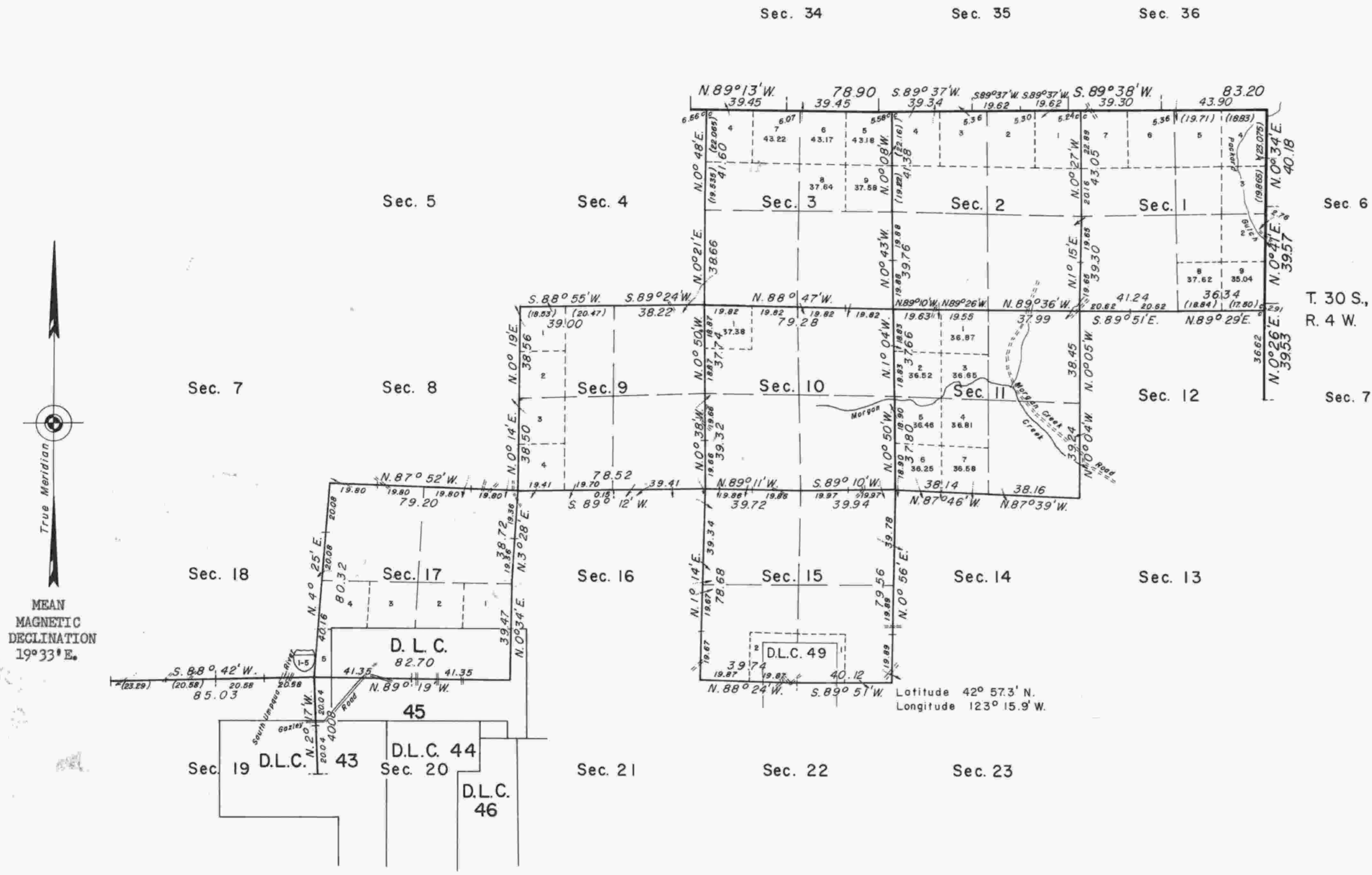


TOWNSHIP 30 SOUTH, RANGE 5 WEST, OF THE WILLAMETTE MERIDIAN, OREGON. DEPENDENT RESURVEY

T. 29 S., R. 5 W.



This plat represents a retracement and reestablishment of a portion of the west boundary, T. 30 S., R. 4 W., a portion of the south boundary, T. 29 S., R. 5 W., and a portion of the subdivisinal lines, T. 30 S., R. 5 W., Willamette Meridian, Oregon, designed to restore the corners in their true original locations according to the best available evidence.

Except as shown hereon, the lottings and areas are as shown on the plats approved March 9, 1855, March 5, 1862, and November 6, 1897.

A portion of the east boundary of the township was surveyed by James Freeman as an off-set to the Willamette Meridian, in 1851.

The north, south, and west boundaries and a portion of the subdivisinal lines were surveyed by Nathaniel Ford, in 1854.

A portion of the west boundary was retraced by Addison R. Flint, in 1855.

The east boundary was retraced by William Thiel, in 1889.

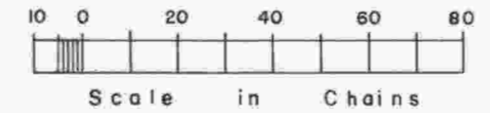
Portions of the north boundary and subdivisinal lines were retraced and the subdivisinal lines completed by Oscar F. Thiel, in 1896.

The east two miles of the north boundary were retraced by Irving Zirpel, Jr., in 1957.

The resurvey was executed by Lynn M. Roseberry and James E. Jolley, Cadastral Surveyors, from October 30, 1967 to June 23, 1969, under Special Instructions dated October 23, 1967, which provide for the surveys included under Group No. 662, Oregon.

True Meridian
MEAN MAGNETIC DECLINATION 19°33'E.

Latitude 42° 57.3' N.
Longitude 123° 15.9' W.



UNITED STATES DEPARTMENT OF THE INTERIOR
BUREAU OF LAND MANAGEMENT
Washington, D.C. May 31, 1978

This plat is strictly conformable to the approved field notes, and the survey, having been correctly executed in accordance with the requirements of law and the regulations of this Bureau, is hereby accepted.

For the Director

Bernard W. Forstner
Chief, Division of Cadastral Survey

"Suspended, July 17, 1986, see File 9600(OR-942)."
"Suspension Lifted, August 29, 1989, File 9632(OR942)."
Refer to plat accepted March 3, 1989.
Timber in this area consists of fir, cedar, pine, oak, madrone, and chinquapin.