

TOWNSHIP 30 SOUTH, RANGE 5 WEST, OF THE WILLAMETTE MERIDIAN, OREGON.

DEPENDENT RESURVEY AND REMONUMENTATION

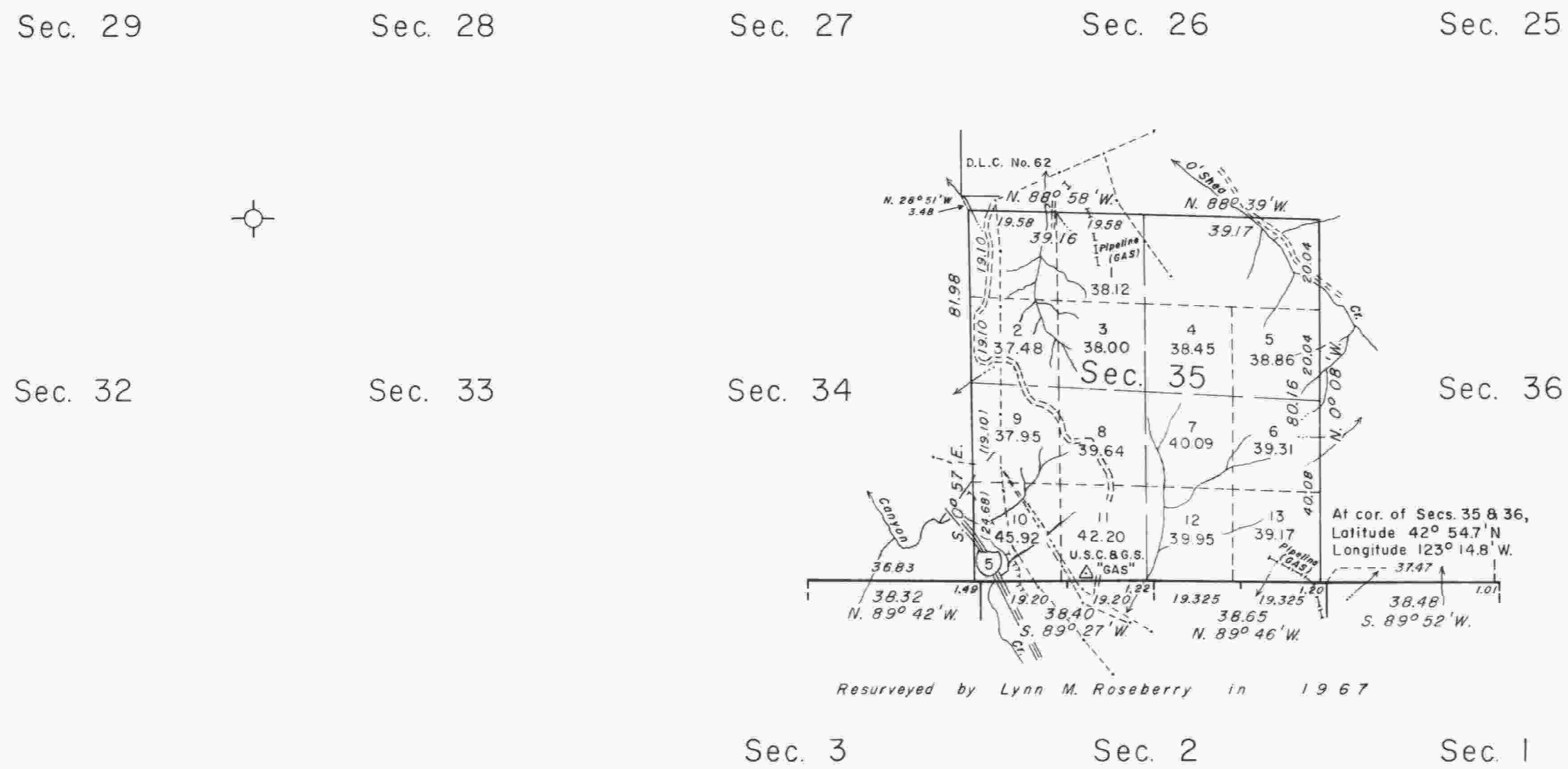
This plat represents a retracement and reestablishment of a portion of the subdivisional lines and the remonumentation of a certain original corner point, T. 30 S., R. 5 W., Willamette Meridian, Oregon, designed to restore the corners in their true original locations according to the best available evidence.

Excepting as new or modified vacant subdivisions are shown hereon, the lottings and areas are as shown on the plat approved March 9, 1855.

The south boundary and subdivisional lines were surveyed by Nathaniel Ford in 1854. William H. Byars resurveyed the east three miles of the north boundary of T. 31 S., R. 5 W., in 1882.

The resurvey and remonumentation were executed by Lynn M. Roseberry, Cadastral Surveyor, September 13 through 27, 1967, under Special Instructions dated May 3, 1957, and Supplemental Special Instructions dated September 8, 1967, which provide for the surveys included under Group Nos. 350 and 614, Oregon, respectively.

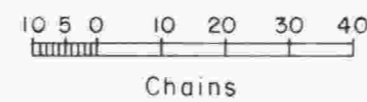
✧ Remonumentation under Group No. 350 in 1967.



Resurveyed by Lynn M. Roseberry in 1967

Sec. 3 Sec. 2 Sec. 1

T. 31 S., R. 5 W.



Area resurveyed: 635.14 Acres

Timber in this area consists of fir, oak, madrone, cedar, alder, maple, dogwood, chinquapin, cascara, willow, pine, and myrtle.

UNITED STATES DEPARTMENT OF THE INTERIOR
BUREAU OF LAND MANAGEMENT
Washington, D. C. January 15, 1971

This plat is strictly conformable to the approved field notes, and the survey, having been correctly executed in accordance with the requirements of law and the regulations of this Bureau, is hereby accepted.

For the Director

Chief, Division of Cadastral Survey